



yukonopticsglobal.com



# CATALOGUE

DAYLIGHT &  
NIGHT VISION OPTICS

2014







## CATALOGUE

DAYLIGHT &  
NIGHT VISION  
OPTICS

2014

# TABLE OF CONTENTS

---

## NIGHT VISION DEVICES

Digital NV Scopes .....	4 - 5
Tube-based NV Scopes .....	6 - 7
NV Binoculars & Goggles .....	8 - 9
Digital NV Riflescopes .....	10 - 11
Tube-based NV Riflescopes .....	12 - 13

---

## DAYLIGHT OPTICS

Optical Sights .....	14 - 15
Laser Rangefinders .....	16 - 17
Binoculars .....	18 - 23
Spotting Scopes .....	24 - 25

---

ACCESSORIES .....	26
-------------------	----

SPECIFICATIONS .....	27
----------------------	----

---





NIGHT  
VISION  
OPTICS

## DIGITAL NV

2014

- 28041 RANGER 5X42
- 28046 RANGER PRO 5X42
- 28052 STRINGER 3.5X42
- 28053 STRINGER 5X50

### STRINGER SERIES FEATURES

- Built-in video recorder
- Compact & lightweight
- Easy to use
- Good image quality
- Resistant to bright light exposure
- Built-in eye-safe laser IR illuminator
- Operates with invisible IR Illuminators
- USB port for PC connection



## RANGER DIGITAL NIGHT VISION DEVICE

The digital Ranger/Ranger Pro devices have features as follows:

The Ranger is equipped with a jack **allowing connection of external video recording sources** or TV.

Both Ranger models feature a jack to enable **connection to external power supplies** whose large capacity significantly prolongs operating time of a digital device. Both Ranger models are delivered with a 12V car adapter and a mains adapter allowing connection to a household power outlet.

The Ranger is equipped with a high power built-in **IR Illuminator** with smooth power control and a memory controller. The IR Illuminator operates in the remote IR range (940 nm), **invisible to the unaided human eye**.

The Ranger Pro night vision features a greater viewing range due to a **more sensitive CCD array and Sum Light advanced program technology** employed in this model.

## STRINGER

The major feature of the Stringer series digital devices is built-in device enabling video recording and photo shooting during observation, with the data being saved on an SD memory card. At the same time they are very easy to use: the unit has only three buttons that switch on the unit, built-in IR Illuminator and launch recording. The Stringer series includes two models - 3.5x42 and 5x50. The 3.5x42 model features low weight/compact dimensions and larger field of view. The 5x50 model features large magnification. The built-in IR Illuminator featuring a laser diode, complies with Class 1 Laser Safety, provides effective observation in complete darkness.







**NIGHT  
VISION  
OPTICS**

# NIGHT VISION SCOPES

24121	NVMT SPARTAN 2X24
24122	NVMT SPARTAN 3X42
24122WP	NVMT SPARTAN 3X42 WATERPROOF
24124	NVMT SPARTAN 1X24
24127	NVMT SPARTAN 4X50
24157	NVMT SPARTAN G2+ 3X50
26141	NVMT SPARTAN 3X42 RIFLESCOPE KIT

24101	EXELON 3X50
24102	EXELON 4X50
24081	PATROL 2X24
24083	PATROL 4X50
24065	NV 5X60

## EXELON SERIES FEATURES

- High aperture ratio
- CF-Super tube inside
- Enhanced resolution – comparable to Gen. 2+
- “Flat” edge-to-edge image
- Long viewing range
- Superior ergonomics



**2014**



## EXELON

At the core of the Exelon is the unique combination of specially designed R-Contact optics and the new CF-Super (Super Gen 1+) Image Intensifier Tube, created specifically for each other such that they will not work with any other system. This exclusive technological development will feature in a full range of models from Yukon's future product line. The result of this development is the highest edge-to-edge resolution performance ever seen in a budget consumer NV product. The high magnification/wide field of view makes the Exelon ideally suited for observing moving objects. Excellent ergonomics mean the Exelon can be easily transported and its showerproof body allows use in the Great Outdoors - hunting, fishing, and hiking as well as for wildlife observation purposes. Comfortable in use and dependable, as all Yukon products, the Exelon is one of the most versatile NV models in the lineup. Thanks to the improved resolution, video and photography possibilities are more evident. Paired with Yukon's NV accessories the Exelon offers the best performance currently available in budget intensifier tube night vision systems.

## VERSATILITY OF MODELS

A wide range will let you choose a suitable model that will fit your specific needs.



Thanks to the employed high-aperture 60 mm long focus lens, the **NV 5x60** monocular features five-power magnification which is quite impressive for a night vision device. With the 5x magnification, the image quality is very good. So the unit allows you to detect and recognize objects at longer distances as compared to other Gen.1 NV devices.



The **Patrol** units are the lightest and most compact in the Yukon Gen.1 range. These units are simple to use, operate on regular AAA batteries, and have reliable diopter adjustment lever.



The **NVMT Spartan** range presents a wide range of models featuring various magnification options, tube generation (Gen.1 or Gen.2+), fields of application. Optimal weight and dimensions, superior ergonomics make the NVMT Spartan easy to carry and to use. Particular attention should be paid to the NVMT Spartan 3x42 Rifle Scope Kit – a “two in one” device – a monocular and night vision rifle scope, with the dot of the laser pointer acting as an aiming reticle.





NIGHT  
VISION  
OPTICS

# NV BINOCULARS & GOGGLES

2014



25022	TRACKER PRO 2X24
25023	TRACKER LT 2X24
25023WP	TRACKER 2X24 WATERPROOF
25024	TRACKER RX 3.5X40
25025	TRACKER 1X24 GOGGLES
25028	TRACKER 3X42

## TRACKER SERIES FEATURES

- Fully multi-coated lenses
- Central focusing (LT, PRO, RX models)
- Dual IR unit (PRO model)
- Wide field of view
- High quality picture
- Deluxe padded soft carrying case
- Exclusive eclipse lens cap system (LT, PRO, RX models)
- Lightweight and compact



## TRACKER

Tracker 2x24 Night Vision Binoculars are compact, lightweight and provide a wide field of view. The shower resistant body increases the binoculars versatility, while the central focusing knob and fixed eye span distance provide comfort and reliability. The twin night vision tubes, housed in the rugged, rubber armored body, provide high-quality viewing in nighttime conditions. The soft, one-piece eyecup prevents external light distortion and light leakage from the device, allowing concealed observation. The exclusive Eclipse lens cap system allows the lens cap to be moved out of the way with a simple twist of the wrist. The Tracker's 2x24 magnification is perfect for general observation, outdoor activities, hunting, commercial and sport fishing, search and rescue. Tracker 1x24 Goggles are convenient for hands-free operation. The Tracker 3x42 binoculars are designed on the basis of the Tracker 2x24 binoculars. They offer the highest maximize magnification and light gathering capacity of the current Tracker range. Light-weight and compact size make the Tracker an ideal choice for the outdoor lifestyle.

## WIDE MODEL RANGE

The Tracker LT 2x24 was the basis for most of the models of the series:



**RX 3.5x40** is the highest magnification NVB in the Tracker series. It comes with removable, individual, collimated doubler lens and can be converted into a LT 2x24 unit by removing the 40 mm lenses.



**Tracker NV 1x24 Goggles** allow comfortable hands-free observation even when in motion. The design of the goggles minimizes fatigue if used for long periods of time. They offer a stable position in front of the eyes when running, pacing or during abrupt turn of the head. The Head Mount allows adjustment of the device in various directions.



**Tracker 3x42** features the highest combination light-gathering capacity and magnification. Long-range IR flashlight. Individually focusable objective lenses.





NIGHT  
VISION  
OPTICS

# DIGITAL RIFLESCOPES

- 26342 PHOTON XT 4.6X42 L
- 26344 PHOTON XT 6.5X50 L
- 26346 PHOTON XT 4.6X42 S
- 26348 PHOTON XT 6.5X50 S

## PHOTON XT SERIES FEATURES

- Large calibre shockproof
- Selectable integrated electronic reticles
- Long eye relief (60 mm)
- Weapon mountable with regular 30 mm rings
- Built-in IR illuminator with three-step power adjustment
- High resolution
- Effective for the use with invisible IR illuminators
- Integrated video output enabling video recording
- Lightweight and compact
- Day and night use
- Weaver rail for accessories

2014



## PHOTON XT

Photon XT riflescopes have a genuine design. With an appearance resembling a regular daylight sight, the Photon is mostly for twilight and nighttime use. But due to the CMOS sensor, the riflescope is also suitable for any illumination conditions, including daylight.

The middle part of the Photon XT body is a 30 mm tube, standard for daylight optical sights, which enables the Photon XT to be mounted on various types of hunting weapons using proven solutions.

Like any other digital device, the Photon XT features good sensitivity in the remote IR range and, unlike majority of tube based devices, can be effectively used together with invisible IR Illuminators (radiation wavelength exceeding 900 nm).

A reticle is electronically displayed on the screen and is permanently located in the plane of target image. The Photon XT's internal memory contains several reticles of various shapes.

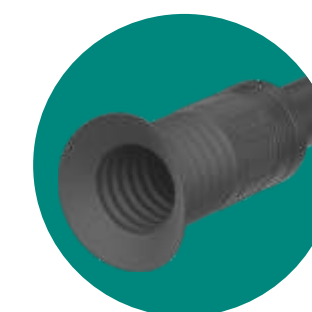
Current information about the status of the device, depicted in the form of icons and numbers, is located on the data panel in the lower portion of the screen, and does not interfere with the image observed.

## IMPORTANT ADVANTAGES

The Photon XT riflescopes have a number of notable features:



The Photon XT riflescopes are outfitted with built-in **IR Illuminators featuring three-step power adjustment**:  
- laser 780 nm IR Illuminator (Photon XT 4.6x42 L & 6.5x50 L models) complying with Class 1 laser safety;  
- LED 810 nm IR Illuminator (Photon XT 4.6x42 S & 6.5x50 S models).



The Photon XT riflescopes feature **one of the best eye relief among night vision riflescopes** which ensures safe shooting even with large calibre weapons.



The Photon XT riflescopes are equipped with a Video Out jack enabling **real time video recording** with the use of external recording equipment.





NIGHT  
VISION  
OPTICS

# NIGHT VISION RIFLESCOPES

26015T SENTINEL 2.5X50  
26016T SENTINEL 3X60  
26017T SENTINEL 2.5X50 L  
26018T SENTINEL 3X60 L



## SENTINEL SERIES FEATURES

- Lightweight and extremely durable titanium body
- Range finding reticle
- User choice of reticle colour (red/green)
- Built-in focusable IR illuminator (laser 780 nm / LED 805 nm)
- Remote control with secure attachment
- Weaver MIL-STD-1913 accessory rail
- Permanently attached lens cap
- Stabilized power supply
- Low battery indicator

## SENTINEL

The Sentinel combines traditional Yukon qualities - modern design, ergonomics, dependability, simplicity and interface with a high degree of functionality. The scope's optical elements are made of high quality optical glass and have multiple anti-reflective coatings.

The optical system employs an internal focusing mechanism providing crisp images at all distances within the riflescope's working range.

The reticle features a brightness control option and a range-finding scale to facilitate adjustment when shooting at different distances (provided the shooter knows the size of the target). The reticle colour can be instantly switched from green-on-green to red-on-green to optimize performance depending on the contrast of the target/surrounding vegetation. The green reticle allows you to turn reticle brightness right down such that you can see through it thus maximizing range.

The batteries in the battery compartment are located vertically. The stabilized, noiseless power supply eliminates possible reticle shift, even when the batteries are nearly exhausted.

When hunting, the quick start-up function of the riflescope and/or IR illuminator can be activated by the remote control.

2014



## DESIGN FEATURES

The Sentinel riflescopes have a smart design:



The Sentinel is remarkable for its modern, light weight and rugged design **due to modern plastic and titanium employed in the riflescope's manufacture.** The riflescope can operate under precipitation of any intensity. The Weaver rail fixed on the left side of the body is used for additional accessories.



The **remote control** duplicates the "on/off" function of the device and IR illuminator. The third button instantly starts the riflescope and IR illuminator (the device works only when the button is kept pressed). This is very convenient when constant observation is not conducted in order to find the appropriate position, take aim and shoot.



The **soft rubber lens cap** is permanently attached to the body to prevent it from being lost. The cap can be slid back down the body for observation or shooting.





DAYLIGHT  
OPTICS

# DAYLIGHT SIGHTS

2014

- 23011 CRAFT 4X32
- 23012 CRAFT 7X50
- 23013 CRAFT 8X56
- 23021 CRAFT 1.5-6X42
- 23022 CRAFT 3-12X56

## CRAFT SERIES FEATURES

- One-piece metal body with anodised coating
- Long eye relief for safe shooting
- High recoil power up to 7000 joules
- High-precision reticle adjustments
- Multicoated lenses ensure maximum light transmission, clarity and precise colour rendering
- Nitrogen-filled optical channel
- Shock absorbing lens & eyepiece bandages
- Flip-up lens and eyepiece caps



## CRAFT

The line of Craft optical sights includes five models. Among them a lightweight and compact 4x32 sight for stalking hunting, high-aperture models 7x50 and 8x56 both for day and late twilight, as well as two multi-purpose zoom sights - 1.5-6x42 and 3-12x56. The 4x optical zoom enables the user to operate the sight in various situations. Lower magnifications combined with a wide field of view are perfect for shooting a fast moving target at short and middle distances. Higher magnifications should be reserved for detailed target observation and precise long-range shots.

The body of the Craft sights is made of high grade aluminium with an anodised black matte finish. Full anodising ensures high wear resistance and anti-glare properties which is essential both for internal surfaces of the body and to reduce possible light reflection.

The design of the sights guarantees resistance to external factors such as climatic (ability to use in precipitation of any intensity) or shockproof (resistance to the recoil of smooth-bore and rifled large caliber weapons).

## FEATURES

The Craft sights have the features as follows:

**Nitrogen-filled optical channel** protects inner optical parts and body of the sights against condensation, often caused by sudden temperature change.

The **reticle is located in the rear focal plane** – regardless of magnification, reticle size does not increase as the magnification factor goes up (so, the reticle does not overlap the target). The center of the reticle is a red illuminated dot with **11 levels of gradual brightness adjustment**.

Each sight is outfitted with **flip-up protective lens and eyepiece caps** with a 270 degree opening span (when fully opened, the caps lie parallel to the optical axis of the sight).

Attachment fittings are constructed as **shock absorbing bandages**. The bandages made of a soft polymer have large rubber ribs and are able to minimise impact load in case a rifle with a mounted sight is dropped.

Coating of the external optical surfaces has a **water-repellent effect** – waterdrops do not stay on the lens surface but slide from it without hindering observation.





# LASER RANGEFINDER

2014

27051 EXTEND LRS - 1000

## EXTEND FEATURES

- High measuring accuracy
- Compact dimensions of the symbols (target indicator, measurement results etc.)
- Water-resistant body
- Short measuring time
- Low power consumption
- Automatic power-off
- Easy to use
- Compact & lightweight
- Low battery indicator



## EXTEND LRS-1000

The Extend LRS-1000 laser rangefinder is a two channel optical-electronic unit, where the viewing channel is combined with pulse laser emission channel. This outlay guarantees compact dimensions and light weight. The unit features six power optical magnification. With dimensions of only 98x75x54mm and weight around 200 grams, the Extend LRS-1000 belongs to a compact class device. The rangefinder is equally easy to carry both on a waist pouch, and a pocket. The unit is able to measure distance to objects up to 1000 m away and to measure speed. The battery capacity allows more than 3000 measurements.

Electronic-optical components of the rangefinder are enclosed in a durable plastic housing featuring Soft Touch which guarantees secure grip in wet hands and nice tactile perception.

## GOOD ERGONOMICS

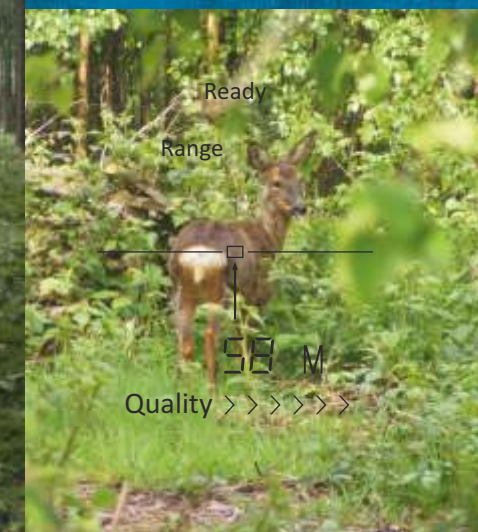
The Extend LRS-1000 is convenient to use:

The **ergonomic body design** allows the user to not only hold the unit comfortably, but to also **keep it leveled correctly**. The joints of the body parts as well as the battery compartment cap are sealed which makes the unit rain resistant.



The **two buttons on the top** activate the unit, make the measurements, switch between operating modes. The buttons are large enough for the bare hand or gloved hand use.

Measurement readings, service information and target indicator are displayed on an LCD display in the shape of thin black lines, they are **well perceived by the user's eye** and do not overlap the object under observation.







# BINOCULARS

DAYLIGHT  
OPTICS

2014

22151 POINT 8X42  
22152 POINT 10X42  
22153 POINT 8X56  
22154 POINT 10X56  
22155 POINT 15X56

## POINT SERIES FEATURES

- Roof prism system
- Nitrogen purged optical path
- Ergonomic eyecups with lateral light exposure protection
- Lost-protected lens caps with magnetic fixation in extreme positions
- Long eye relief
- Multicoated lenses



## POINT

At the core of the Point series lies Roof prism optical scheme. The light and small size models 8x42 and 10x42 feature optimal magnification for terrain or forest hunting in daylight or early twilight.

Hunting in the mountains, tracking results of target shooting, lowlight observation, amateur astronomy – all these applications are handled by the series of Point 8x56, 10x56 and 15x56 models, featuring high light gathering capacity.

The solid design of the Point binoculars make them perfect for the use in harsh conditions: the fully waterproof nitrogen purged body allows operation in precipitation of any intensity including submersion (IPX7 degree of protection according to IEC 60529).

## PERFORMANCE FEATURES

The Point binoculars have the features as follows:

The **nitrogen-purged optical channel** protects inner optical parts and body against condensation, often caused by rapid temperature change (for instance, when the unit is brought from a cold environment into a warm room).

The **lens caps can be fixed** in the extreme positions (open and closed) **with the help of magnets**. The caps closely fit binocular's body and do not hinder comfortable operation.

**Retractable rubber eyecups** (come with 56 mm models) allow you to choose optimal eye relief. The large eyecups protect the eye from lateral light exposure. Another important feature – when the eyecup rotates, its outer part does not move.







DAYLIGHT  
OPTICS

# COMPACT BINOCULARS

2014

22141 **SIDEVIEW 8X21**  
22142 **SIDEVIEW 10X21**

## SIDEVIEW SERIES FEATURES

- Compact pocket size
- Lightweight
- Optimal optical magnification
- Soft touch body
- Fixed flip-up lens caps
- Carrying case for using on a neck or waist belt
- Convenient diopter adjustment lever
- Central focusing
- Skewed eyeshades against lateral light exposure
- Stylish design



## SIDEVIEW

Ultra-compact and ultra-lightweight, the Sideview is the perfect binocular to take with you everywhere. They easily fit in to pockets or glove compartments.

The built-in and hinged Eclipse lens caps mean that you will never lose them. The tactile, soft-touch body ensures a reliable grip, even in the wet. Ergonomic eyecups help cut out extraneous light from your surroundings. They are supplied complete with a high quality shoulder/belt mount case.

The Sideview is a perfect binocular not only for hunters, but also for tourists (the army of tourists, starting from amateurs of spending time in the open country to the «hunters for sights»), ornithologists, and sport amateurs, whose lives are closely related to movements and who want to own a high power lightweight binocular.

## USABILITY

Every little thing is very well thought in the Sideview series:

The **lenses are protected with solid plastic caps attached to the body**. Before use, the caps are flipped up and placed in the dedicated place on the top of the body.

The diopter compensation between the eyes is done with the help of a **convenient diopter adjustment lever** built in the right eyepiece.

The Sideview binoculars are supplied with a **dense pouch to carry on the neck or waist**.







# FIELD BINOCULARS

2014

DAYLIGHT  
OPTICS

- 22031 FUTURUS 7x50WA
- 22032 FUTURUS 10x50WA
- 22033 FUTURUS 12x50WA
- 22034 FUTURUS 16x50
- 22035 FUTURUS 20x50
- 22038 FUTURUS 8x40WA
- 22131 FUTURUS 8-24x50

## FUTURUS SERIES FEATURES

- Wide model line
- High-aperture fully multicoated optics
- Classic optical scheme
- Flip-up lens caps
- Functional eyecups
- Shockproof composite rubber armoured housing
- Climatic resistance



## FUTURUS

The model line of Futurus field binoculars is designed for majority of users. The classic Porro prism based construction features improved light transmission and three-dimensional image. Time-proven Futurus binoculars can boast genuine design, excellent ergonomics and decent optical characteristics. Fully multicoated lenses ensure bright contrast image, absence of aberration and realistic colour rendering. The rubber armoured housing provides dust- and water resistance properties.

Thanks to the shape of the housing, you can firmly hold the binoculars even in wet hands. Optimal weight of the binoculars balances hand tremor which is especially useful in high power models.

The first employed exclusive lens an eyepiece Eclipse system is still up-to-date and singles majority of Futurus series out of similar optical devices. The 1/4 inch tripod socket allows you to fix the binoculars on a standard tripod.

## DEPENDABILITY AND EASE OF HANDLING

The Futurus binoculars have a number of important constructive solutions:

**Genuine zoom mechanism** employed in the **Futurus 8-24x50** model, provides smooth, uniform and simultaneous movement of the zoom joints in the optical channels thus ensuring equal magnification in both. Another important peculiarity is increased wear resistance.

The **lens caps** are not removed but flipped back on the housing and do not hinder observation (the caps are rotatable and can be placed elsewhere on the lens cover). The caps are permanently attached to the housing so they **cannot be lost**.

The **eyepiece caps**, attached to the eyepieces with plastic rings, protect against dust and moisture, when opened, they **minimise lateral light exposure** thus improving image quality and reducing eye strain.







**SCOUT 20X50**  
21021  
**SCOUT 30X50**  
21022  
**SCOUT 30X50 WA**  
21023  
**YUKON 20-50X50 WA**  
21014  
**YUKON 6-100X100**  
21031  
**YUKON 6-100X100 LT**  
21032

## YUKON 6-100x100 FEATURES

- Incredible magnification range
- High light-gathering capability
- Two independent optical channels (main 25-100x100 and auxiliary 6-25x25)
- 45-degree revolving eyepiece (eyepiece turn - 360°)
- LT version with a straight-through eyepiece
- Photo & video adaptable
- Lens hood protecting against side backgrounds and atmospheric precipitation
- Light weight



## YUKON 6-100x100

For many years the spotting scope Yukon 6-100x100 has been no competitors. The unique feature about this scope is the dual channel optical arrangement which enables observation within a wide range of magnification from 6x to 100x. With an impressive diameter of the main 100 mm lens, the scope delivers a quality, bright image of objects at a long distance. The auxiliary channel with the 25 mm lens (with magnification ranging from 6x from 25x) can be used for initial object focusing. Switching between the channels is done easily with the turn of a knob.

There are two models of the spotting scope: with a straight revolving eyepiece (LT model) and 45-degree revolving eyepiece which guarantees maximum comfort in any position during observation.

The spotting scope Yukon 6-100x100 is especially good for wildlife observation in open terrain, for urban use, including professional applications. Another unbeatable advantage of the scope is the ability to use it for quality video shooting and photography.

## WIDE RANGE OF MODELS

Along with the Yukon 6-100x100, our company offers a number of large magnification spotting scopes:



The light, compact, rugged, rubber-armored body and the fully multicoated lenses are trademarks of the **Yukon 20-50x50 WA Variable Power Spotting Scope**. The scope comes with a carrying case as standard.



The **Scout's** collapsible design, multicoated lenses and rubber-armored body make it the perfect choice for those who desire introductory or compact optics. Thanks to the rubber coating the scope will not slip out of wet hands; it improves dependability and prevents the Yukon and Scout scopes against impact, dust and moisture. With plenty of power for a broad range of uses, the Scout series of spotting scopes are functional at home, for viewing wildlife, for traveling, hiking or prolonged use during nature observation.



**29032 NVMT Head Mount**

The NVMT Compact Head Mount is designed for joint use with the NVMT Spartan 1x24 night vision device or other night vision devices with a similar bracket. This allows hands-free operation of the night vision device in partial and complete darkness. The Head Mount ensures stable positioning of a night vision device in front of the user's eyes, even while in fast motion (pacing, running, abrupt movements). The Head Mount is simple and convenient to use. Minimal protrusion of the suspension point reduces fatigue and load on the user's neck if operated for long periods of time. The Head Mount can also be paired with a camouflage cover. Combined with a night vision device, the NVMT Compact Head Mount is ideal for high-tech ranger games, night hiking etc. Only recommended for low magnification devices.

**29024 Yukon 6-100x100 Digital Camera Adapter**

is a great accessory for 6-100x100 models. The adapter allows users to take digital pictures and will accommodate most digital cameras. Not for use with the LT model.

**29041 Binocular Tripod Adapter**

With the help of adapter the binoculars can be mounted on a tripod. Useful for models with high magnification for mounting of the binocular on the tripod 1/4"

**29094 Yukon Video Attachment**

Allows users to make video and photo recording independently, as well as with the Yukon 6-100x100 / 20-50x50 spotting scopes, NVMT, Exelon and NV 5x60 night vision scopes. The Yukon Video Attachment includes a camera and adapters to fit the eyepiece of various Yukon optical devices

**27041 Yukon MPR Mobile Player/Recorder**

Is intended for video recording of input video signal from CCD / CMOS array of Ranger/Ranger Pro or Photon Digital Night Vision

**29074 NVMT IR Flashlight**

(100 mW, 805 nm)  
Combines Yukon's popular IR unit with a mount to double, or even triple, the viewing distance of Gen 1 devices on the darkest of nights.

**29052****NVMT Objective Lens 42 mm**

Affords 3x magnification and is recommended for optimum performance with the NVMT rifle conversions and handheld monoculars. Not for use with WP models.

**29053****NVMT Objective Lens 50 mm**

Is perfect for photography and general observation with its 4x magnification capability - the highest in the NVMT series. Not for use with WP models.

**29043 NVMT Rifle Mount**

Adapts NVMT Spartan to fit on a Weaver/Dovetail mount

**29061 NVMT Rifle Conversion Eyepiece**

0.5x image magnification. Increased eye relief. Not compatible with WP models.

**27021 DSAS Directional Sound Amplification System**

Uses a cardioid microphone to capture sounds. Can be used to listen or record. Fits most Yukon NV monoculars.

**27022 DSAS with Weaver Mount**

Fits NV weapon scopes

**29023 Digital Camera Adapter**

is recommended for all Yukon NVMT Spartans and can also be used with Yukon 20-50x50 WA spotting scopes. Works with most compact digital cameras.

**29093****NVB Tracker 2x24 Doubler**

can be used with all Tracker 2x24 models. This feature allows you to easily increase the magnification of these binoculars from 2x to 3.5x. Not usable with Tracker 1x24 Goggles or Tracker 3x42

**29091 1.7x Lens Converter**

provides 4.3x magnification when used with the Sentinel 2.5x50 Riflescope

**29044 AK Side Mount Adapter**

is used for mounting NVRS/Sentinel units (with Weaver mount) on AK and SVD-type rifles.

**29101****Weather Guard 50 mm NVRS**

The Weather Guard, attached in front of the objective lens of the NVRS-F riflescopes, will protect the objective lens against atmospheric precipitation

**29102****Weather Guard 50 mm Yukon****29103****Weather Guard 60 mm Yukon**

are used with Sentinel 2.5x50 & 3x60 riflescopes.

**TUBE-BASED NIGHT VISION DEVICES**

Model SKU #	EXELON SERIES		NVMT SPARTAN SERIES							NV		PATROL SERIES			NVB TRACKER SERIES				
	3x50 24101	4x50 24102	G2+ 3x50 24157	2x24 24121	3x42 24122	3x42 24122WP	4x50 24127	1x24 24124	3x42 Kit 26141	5x60 24065	2x24 24081	4x50 24083	LT 2x24 25023	2x24WP 25023WP	Pro 2x24 25022	RX 3.5x40 25024	1x24 25025	3x42 25028	
Generation	CF-Super	CF-Super	2+	1	1	1	1	1	1	1	1	1	1	1	1	1	1	1	1
Magnification	3	4	3	2	3	3	4	1	3 / 1.5	5	2	4	2	2	2	2 / 3.5	1	3	
Lens diameter, mm	50	50	50	24	42	42	50	24	42	60	24	50	24	24	24	24 / 40	24	42	
Field of View, °	13	13	14	25	20	20	15	30	20	12	23	15	25	25	25	25 / 15	30	20	
Eye Relief, mm	12	12	17	12	12	12	12	12	12 / 45	12	12	12	12	12	12	12	12	12	
Resolution, lines per mm	40	40	41	36	36	36	36	36	36	40	36	36	36	36	36	36	36	36	
Range of detection, m*	180	200	600	120	150	150	180	80	150 / 100	180	120	180	120	120	120	120 / 150	80	150	
Power Supply, V	3 (1xCR123A)						3 (1xCR123A)				3 (2xAAA)					3 (1xCR123A)			
IP Standard	IPX4	IPX4	IPX4	IPX	IPX4	IPX7	IPX4	IPX4	IPX4	IPX4	IPX4	IPX4	IPX4	IPX7	IPX4	IPX4	IPX4	IPX4	
Length, mm	198	198	208	142	162	162	191	142	162 / 261	206	142	190	175	175	175	175 / 239	175	184	
Width, mm	87	87	86	60	60	60	60	60	60	70	87	87	123	123	123	123	123	123	
Height, mm	60	60	60	82	82	82	87	82	82	93	60	62	72	72	72	72	72	72	
Weight (without batteries), kg	0.5	0.5	0.6	0.38	0.5	0.5	0.6	0.38	0.5 / 0.7	0.66	0.34	0.4	0.6	0.6	0.6	0.6	0.6+0.2	0.7	

**DIGITAL NIGHT VISION DEVICES**

Model SKU #	RANGER SERIES		STRINGER SERIES	
	5x42 28041	Pro 5x42 28046	3.5x42 28052	5x50 28053
Magnification, x	5	5	3.5 (PAL)	5 (PAL)
Objective Lens, mm	42	42	42	50
Horizontal FOV, °	5	5	5.5	4
Resolution, lines / mm	40	40	34	34
Built-In IR Flashlight, type	LED	LED	Laser	Laser
Wavelength of Built-In IR Flashlights, nm	940	940	780	780
Equivalent IR Power, mW	Max.400	Max.400	125	125
Range of Detection, m*	250	450	200	250
Power Supply, V / Batteries	9 / 6xAA	9 / 6xAA	3 / 2xAA	3 / 2xAA
Built-In Video Recorder Availability	No	No	Yes	Yes
Type & max capacity of memory card	-	-	SD 32Gb	SD 32Gb
Length, mm	170	170	161	188
Width, mm	116	116	84	86
Height, mm	76	76	56	59
Weight (without batteries), kg	0.65	0.65	0.33	0.35

**DIGITAL RIFLESCOPES**

Model SKU #	PHOTON XT SERIES			
	4.6x42 26342	4.6x42 26346	6.5x50 26344	6.5x50 26348
Magnification, x	4.6	4.6	6.5	6.5
Lens diameter, mm	42	42	50	50
Sensor type	CMOS	CMOS	CMOS	CMOS
Camera resolution (CCIR), pixel	656x492	656x492	656x492	656x492
Eye relief, mm	60	60	60	60
Type of built-in Illuminator	Laser	LED	Laser	LED
Built-in IR wavelength, nm	780	810	780	810
Detection range, m*	300	100	350	120
Tube diameter, mm	30	30	30	30
Power supply, V	3	3	3	3
Battery type	2xAA	2xAA	2xAA	2xAA
Operation time on battery set (IR on/off), hour	4/5	4/5	4/5	4/5
Operating temperature, °C	-15 ... +50	-15 ... +50	-15 ... +50	-15 ... +50

**TUBE-BASED NV RIFLESCOPES**

Model SKU #	SENTINEL SERIES			
	2.5x50 26015T	2.5x50 L 26017T	3x60 26016T	3x60 L 26018T
Generation	1	1	1	1
Magnification, x	2.5	2.5	3	3
Lens diameter, mm	50	50	60	60
Field of view, °	13	13	11	11
Eye relief, mm	45	45	45	45
Built-in IR type	LED	Laser	LED	Laser
Built-in IR wavelength, nm	805	780	805	780
Viewing Range, m*	150	200	170	220
Min. Focusing Range, m	5	5	8	8
Operating Temperature, °C	-30...+40	-30...+40	-30...+40	-30...+40
Power Supply, V	3 (2xAA)	3 (2xAA)	3 (2xAA)	3 (2xAA)
Dimensions, mm	270x90x100		307x90x100	

Model SKU#	YUKON 100X SERIES		Model SKU #	YUKON			SCOUT SERIES
	6-100x100 21031	6-100x100 LT Silver 21032		20-50x50 WA 21014	20x50 21021	30x50 21022	30x50 WA 21023
Main Objective Magnification, x	25-100	25-100	Objective Lens, mm	50	50	50	50
Auxiliary Objective Magnification, x	6-25	6-25	Magnification, x	20-50	20	30	30
Main Obj. Lens Diameter, mm	100	100	Eye Relief, mm	14	12	12	12
Auxiliary Obj. Lens Diameter, mm	25	25	Field of View, °	2.5...1	3.1	1.8	2.3
Eye Relief, mm	12...16	12...16	Tripod Mount, inch	1/4 & 3/8	1/4	1/4	1/4
Angle of the eyepiece according to the optical path of the device, °	45	0	Lenght, mm	240	230 (closed) ...370 (opened)		
FOV, °, by magnifying power of:			Width, mm	76	70	70	70
- 6x	7	7	Height, mm	110	70	70	70
- 25x	2.5	2.5	Weight, kg	0.7	0.45	0.45	0.45
- 100x	0.6	0.6					
Dimensions, mm	425x119x85						
Weight, kg	1.5	1.5					

**BINOCULARS**

Model SKU #	FUTURUS SERIES							SIDEVIEW SERIES		POINT SERIES				
	8x40WA 22038	7x50 WA 22031	10x50 WA 22032	12x50 WA 22033	16x50 22034	20x50 22035	8-24x50 22131	8x21 22141	10x21 22142	8x42 22151	10x42 22152	8x56 22153	10x56 22154	15x56 22155
Lens diameter, mm	40	50	50	50	50	50	50	21	21	42	42	56	56	56
Magnification, x	8	7	10	12	16	20	8 - 24	8	10	8	10	8	10	15
Eye Relief, mm	14.5	30	16	12	10	10	15	10	7.5	21	16	27	21	18
Exit Pupil, mm	5	7	5	4.2	3.1	2.5	6.25 - 2	2.6	2.1	5.25	4.2	7	5.6	3.5
Field of View, °	7.5	6.5	6	5.3	4	3	4.4 - 2.2	7	6.5	7.4	6.5	6.3	6	4
Min. Focusing Distance, m	8	5	5	5	10	10	7 - 16	5	7	1.3	1.3	3.5	3.5	3.5
Length, mm	150	200	193	185	185	185	197	124	124	180	180	207	207	207
Width, mm	190	215	215	215	215	215	217	99	99	128	128	145	145	145
Height, mm	63	70	70	70	70	70	70	45	45	58	58	70	70	70
Weight, kg	0.82	1.03	1.03	1.0	1.02	0.99	1.0	0.19	0.19	0.64	0.64	1.17	1.22	1.23

**DAYLIGHT OPTICAL SIGHTS**

Model SKU #	CRAFT SERIES				
	4x32 23011	7x50 23012	8x56 23013	1.5-6x42 23021	3-12x56 23022
Magnification, x	4	7	8	1.5 - 6	3 - 12
Lens diameter, mm	32	50	56	42	56
Field of view, degree	5	2.8	2.5	11 - 2.8	5 - 1.3
Eye relief, mm	100	97	95	80	92
Diopter adjustment range, D	-2.5 ... +2.5	-2.5 ... +2.5	-2.5 ... +2.5	-2.5 ... +2	-3 ... +2
Mounting diameter, mm	30	30	30	30	30
Adjustment per click, mm at 100m	7	4	4	7	7
Operating temperature, °C	-30 ... +60	-30 ... +60	-30 ... +60	-30 ... +60	-30 ... +60
Degree of protection, acc. to IEC 60529	IPX7	IPX7	IPX7	IPX7	IPX7
Power supply	CR2032/3V	CR2032/3V	CR2032/3V	CR2032/3V	CR2032/3V
Length, mm	298	387	411	311	387
Weight, kg	0.480	0.648	0.746	0.555	0.740

**LASER RANGEFINDERS**

Model SKU #	EXTEND SERIES		
	LRS-1000 27051		
Measurement range, m	1000	Degree of protection,	
Accuracy of range measurement, m	±1	IP code (IEC 60529)	IPX5
Min. measurement range, m	5	Power supply	CR2 3V Lithium
Magnification, x	6	Battery life	3000 activations
Lens diameter, mm	24	Operating temperature, °C	- 10 ...+45
Lens diameter of the receiver, mm	24	Auto power off	after 20 seconds
Field of view, degree	7	Dimensions, mm	98x75x54
Eye relief, mm	14	Weight	
Exit pupil, mm	4	(without/with battery), g	195 / 205
Eyepiece adjustment, diopter	±4		