



## OUTDOOR & HUNTING ACCESSORIES

SPORTING OPTICS | SHOOTING ACCESSORIES | TRIPODS | CASES

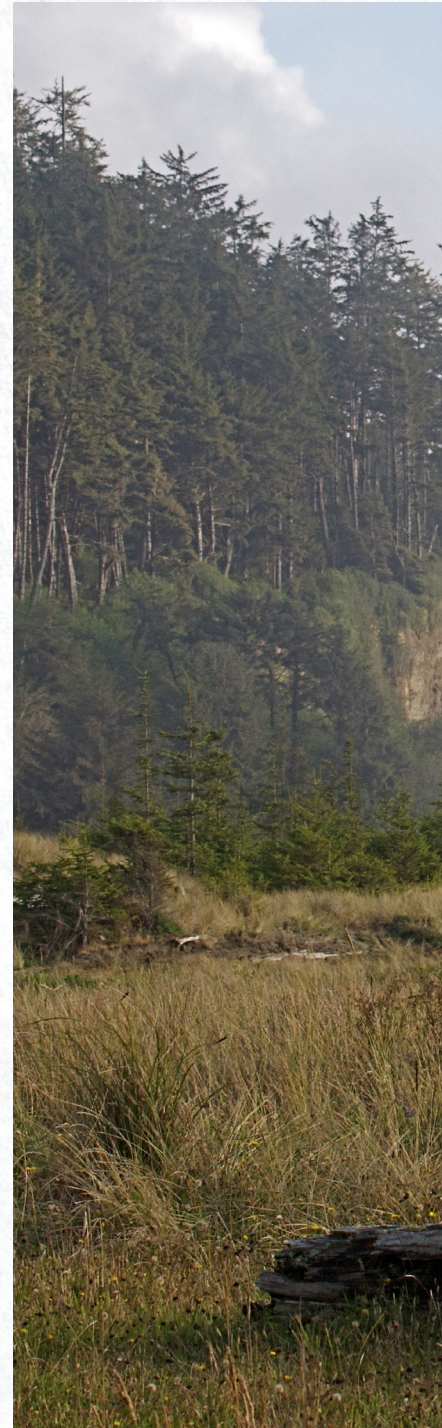
[www.vanguardworld.com](http://www.vanguardworld.com)





# CONTENTS

<b>RIFLESCOPES</b>	Endeavor RS	4	<b>NEW</b>
<b>BINOCULARS</b>	Endeavor ED II	6	<b>NEW</b>
	Endeavor ED	8	
	Spirit ED	10	
	Spirit XF	12	
	Orros	13	
<b>SPOTTING SCOPES</b>	Endeavor HD	14	
	Endeavor XF	16	
<b>OPTICS ACCESSORIES</b>	Accessories	18	
	Optic Coatings	19	
<b>SHOOTING STICKS</b>	PRO	20	
	Quest	22	
	Scout	24	
	Uni-Stik	25	
	Equalizer Pro/Equalizer QS/Equalizer	26	
<b>GUN RESTS</b>	Porta-Aim	28	
	Steady-Aim	29	
<b>GUN SLINGS &amp; ACCESSORIES</b>	Gun Hugger	30	
	Hunting Accessories	31	
<b>TRIPODS &amp; HEADS</b>	ABEO Video	32	
	Alta+	34	
	Alta CA	36	<b>NEW</b>
	Espod CX	38	
	Espod CX 1/Espod CX 1OS	40	<b>NEW</b>
	Table Top Tripods	41	
	PH Window Mounts	41	
<b>GEAR &amp; GUN CASES</b>	Outback	42	
	Classic	44	
	Supreme	46	
	VGP	47	
<b>COMPARISON CHARTS</b>	Sporting Optics Comparison Charts	48	
	Hunting Accessories Comparison Charts	49	











## ENDEAVOR RS

### Outstanding Precision and Accuracy

Announcing the all new Vanguard Endeavor RS rifle scope. Offering the design and performance that you've come to expect from Vanguard's successful Endeavor series, this exceptional rifle scope breaks onto the scene with best-in-class image quality, comfortable ergonomics and robust construction. The Endeavor RS is engineered to handle rugged terrain even in the most challenging conditions.



Premium HOYA ED Glass



Waterproof & Fogproof



Anti-Reflection Coating



Windage & Elevation Reset



Exceptional Low Light Performance



Rapid Focus Eyepiece



Locking Parallax System



Single-Piece Tube





**NEW**



	Power	Diameter of Objective mm	Field of View		View Angle °	Tube Size		Eye Relief		Reticle	Weight		Adjustment Graduation	Travel Per Rotation	Max Elevation & Windage	Parallax Setting
			m/1000m	ft/1000yds		in	mm	in	mm		g	oz				
<b>NEW</b>	Endeavor RS 41240	4-12	40	6.7-2.6	27.1-9.2	3.8-1.5	1 25	4.5	114	Duplex/BDC	485	17.1	1/4 MOA	1/2 MOA	57 MOA	50 yds - ∞
<b>NEW</b>	Endeavor RS 351050	3.5-10	50	7.7-3.2	27.8-9.4	4.2-1.9	1 25	4.2	108	Duplex/BDC	493	17.4	1/4 MOA	1/2 MOA	57 MOA	50 yds - ∞
<b>NEW</b>	Endeavor RS 30940	3-9	40	6.1-2.9	35.5-12.2	3.8-1.8	1 25	4.5	114	Duplex/BDC	455	16	1/4 MOA	1/2 MOA	57 MOA	50 yds - ∞





		Power	Diameter of Objective mm	Field of View		View Angle °	Near Focus		Eye Relief mm	Dimension (L x W)		Weight		Adjustable Pupillary mm
				m/1000m	ft/1000yds		m	ft		mm	mm	in	g	
NEW	Endeavor ED II 8320	8	32	126	377	7.2	1.8	5.9	17.5	132x128	5 1/4x5	540	19.0	55 - 74 mm
NEW	Endeavor ED II 8420	8	42	126	377	7.2	2.0	6.6	19.5	154x130	6 1/8x5 1/8	770	27.1	58 - 74 mm
NEW	Endeavor ED II 1042	10	42	114	340	6.5	2.0	6.6	18.5	154x130	6 1/8x5 1/8	770	27.1	58 - 74 mm





## ENDEAVOR ED II

### World-Class Features and Performance

Vanguard is building on its illustrious foundation set by the award winning Endeavor ED binoculars by introducing the new Endeavor ED II binocular series, featuring outstanding HOYA ED glass. From rain to snow, professional to weekend observer, the new Endeavor ED II is engineered for performance and built to last a lifetime.



Premium HOYA ED Glass



Waterproof & Fogproof



Exceptional Low Light Performance



Multi-Coated Lenses



Locking Diopter Ring



3-Stage Twist Eyecups



Anti-Reflection Coating



Large Precise Focus Wheel





## ENDEAVOR ED

### Sharpness Like Never Before

Expect vivid viewing to the extreme, because there's nothing typical about Endeavor ED binoculars. They deliver sharpness and clarity like never before with exceptional 92% light transmission and remarkable color resolution and contrast. Other features include an ergonomic, open-bridge design for comfortable use, wide view angle, BaK4 phase-coated roof prisms, anti-reflection coating, large focus adjustment wheel and long eye relief. The premium ED glass reduces color dispersion to provide high-resolution color and clarity.



Premium ED Glass



Waterproof & Fogproof



Exceptional Low Light Performance



Multi-Coated Lenses



Locking Diopter Ring



3-Stage Twist Eyecups



Anti-Reflection Coating



Large Precise Focus Wheel





	Power	Diameter of Objective mm	Field of View		View Angle °	Near Focus		Eye Relief mm	Dimension (L x W)		Weight		Adjustable Pupillary mm
			m/1000m	ft/1000yds		m	ft		mm	in	g	oz	
Endeavor ED 8320	8	32	126	377	7.2	2	6.6	17.5	132 x 128	5.19 x 5	480	16.9	55 - 74 mm
Endeavor ED 8420	8	42	122	367	7	2	6.6	19	154 x 130	5.13 x 6	730	25.8	58 - 74 mm
Endeavor ED 1042	10	42	114	340	6.5	2.5	8.2	16.5	154 x 130	5.13 x 6	730	25.8	58 - 74 mm





	Power	Diameter of Objective mm	Field of View		View Angle °	Near Focus		Eye Relief mm	Dimension (L x W)		Weight		Adjustable Pupillary mm
			m/1000 m	ft/1000 yds		m	ft		mm	in	g	oz	
Spirit ED 8360	8	36	122	367	7	2	6.6	17	125 x 120	4.88 x 4.75	530	18.7	55 - 75 mm
Spirit ED 8420	8	42	110	330	6.3	2.5	8.2	19	145 x 125	5.75 x 4.88	640	22.6	55 - 75 mm
Spirit ED 1042	10	42	105	314	6	2.8	9.2	16	145 x 125	5.75 x 4.88	640	22.6	55 - 75 mm
Spirit ED 1050	10	50	98	293	5.6	3	9.8	19	165 x 135	6.5 x 5.38	845	29.8	59.5 - 74 mm





## SPIRIT ED

### Quality Meets Excellence

Spirit ED's 90% light transmission results in a near-perfect viewing experience. Its advanced lens and prism design with ED glass means you'll get up-close and personal with nature, unveiling details in a way you never thought possible. They boast some user-friendly features too: lightweight, comfortable-to-hold body design, 2-stage twist-out eyecups for long eye relief, and large focus adjustment wheel. They are also 100 percent waterproof, so the weather will never slow you down.



Premium ED Glass



Waterproof & Fogproof



Exceptional Low Light Performance



Multi-Coated Lenses



Lightweight Body Design



2-Stage Twist Eyecups



Anti-Reflection Coating



Large Precise Focus Wheel





## SPIRIT XF

### Exceptional Clarity and Craftsmanship

Spirit XF binoculars outshine other optics in its price class. They offer outstanding image quality, weather resistance and user-friendly features! Expect edge-to-edge clarity, high-contrast images and brilliant color reproduction thanks to its phase-coated BaK4 roof prisms and fully multi-coated lenses. 100% waterproof and fogproof, Spirit XF is made to take on the outdoors and challenging weather with textured rubber armor for a secure, shock resistant grip. Compact and lightweight, Spirit XF has a unique open-bridge body design so it's lightweight, compact and comfortable to hold without tiring.



Waterproof & Fogproof



Lightweight Body Design



Large Precise Focus Wheel



2-Stage Twist Eyecups

	Power	Diameter of Objective mm	Field of View		View Angle °	Near Focus		Eye Relief mm	Dimension (L x W)		Weight		Adjustable Pupillary mm
			m/1000m	ft/1000yds		m	ft		mm	in	g	oz	
Spirit XF 8420	8	42	136	409	7.8	2.1	6.9	20	150 x 130	5.88 x 5.13	700	24.7	57 - 74 mm
Spirit XF 1042	10	42	111	332	6.35	2.1	6.9	16	150 x 130	5.88 x 5.13	665	23.4	57 - 74 mm



# ORROS

## Trusted for Any Adventure

Whether you're scanning through nearby brush or glassing a distant open field, Orros is ideal for any occasion. These binoculars are compact enough to fit snugly in your pocket, yet powerful enough to see crisp detail from a staggering distance. They are 100% waterproof and fogproof, meaning you won't have to worry what the day may bring: Orros is the perfect binocular for any occasion.



Waterproof & Fogproof



Lightweight Body Design



Large Precise Focus Wheel



	Power	Diameter of Objective mm	Field of View		View Angle °	Near Focus		Eye Relief mm	Dimension (L x W)		Weight		Adjustable Pupillary mm
			m/1000m	ft/1000yds		m	ft		mm	in	g	oz	
Orros 8250 (compact)	8	25	114	340	6.5	2.5	8.2	12.5	110 x 120	4.38 x 4.75	280	9.9	58-72 mm
Orros 1025 (compact)	10	25	110	330	6.3	2.5	8.2	10	115 x 120	4.5 x 4.75	280	9.9	58-72 mm
Orros 8320	8	32	122	367	7	2.1	6.9	16	130 x 125	5.13 x 4.88	510	18	58-74 mm
Orros 8420	8	42	109	327	6.25	2.1	6.9	21	145 x 130	5.75 x 5.13	600	21.2	58-74 mm
Orros 1042	10	42	100	298	5.7	2.1	6.9	18	145 x 130	5.75 x 5.13	600	21.2	58-74 mm





## ENDEAVOR HD

### Remarkable Precision and Design

The Endeavor HD Spotting Scope is one of the most advanced pieces of optical equipment that Vanguard has ever produced. All models feature a rubber armored magnesium body, are waterproof submersible, nitrogen filled and fogproof. The optical system employs extra-low dispersion glass (ED) ensuring accurate color rendition and virtually eliminating color fringing. A built-in sunshield is included to eliminate glare in direct sunlight, as well as a padded raincoat with sling for carry and protection. All models are equipped with fine and coarse focusing wheels for quick and precise fine tuning adjustments.



Premium ED Glass



Waterproof & Fogproof



Exceptional Low Light Performance



Multi-Coated Lenses



Built-In Sunshield



Anti-Reflection Coating



Fine & Course Focus Wheels



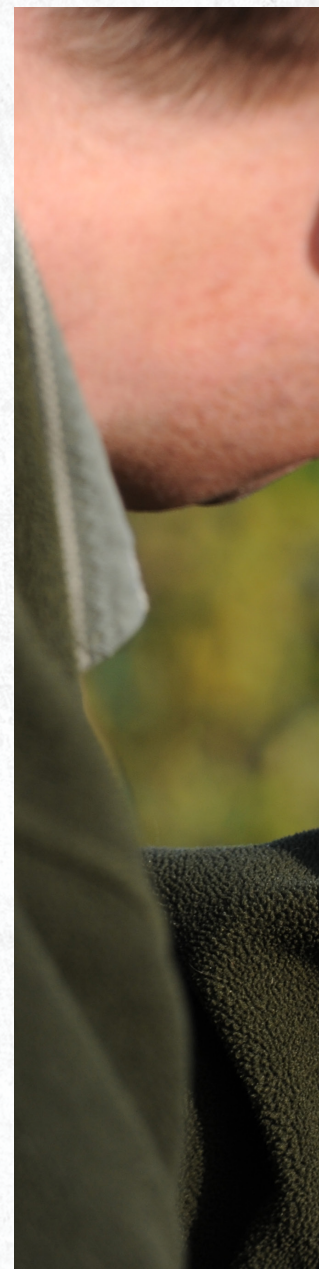
Large Comfortable Eye Piece





	Power	Diameter of Objective mm	Field of View		View Angle °	Near Focus		Eye Relief mm	Dimension (L x W)		Weight	
			m/1000m	ft/1000yds		m	ft		mm	in	g	oz
Endeavor HD 65A	15 - 45	65	48 - 23	144 - 68	2.75 - 1.3	4.5 - 5.5	14.8 - 18	19 - 20	345 x 175	13.6 x 6.9	1450	51.1
Endeavor HD 65S	15 - 45	65	48 - 23	144 - 68	2.75 - 1.3	4.5 - 5.5	14.8 - 18	19 - 20	350 x 120	13.8 x 4.8	1450	51.1
Endeavor HD 82A	20 - 60	82	37 - 17	110 - 52	2.1 - 1.0	6 - 6.5	19.7 - 21.33	19 - 20	375 x 180	14.8 x 7.1	1890	66.7
Endeavor HD 82S	20 - 60	82	37 - 17	110 - 52	2.1 - 1.0	6 - 6.5	19.7 - 21.33	19 - 20	375 x 180	14.8 x 7.1	1890	66.7





	Power	Diameter of Objective mm	Field of View		View Angle °	Near Focus		Eye Relief mm	Dimension (L x W)		Weight	
			m/1000m	ft/1000yds		m	ft		mm	in	g	oz
Endeavor XF 60A	15 - 45	60	47 - 23	141-168	2.7 - 1.3	5-6	16.4- 19.7	19 - 20	350x180	13.8x 7.1	1280	45.2
Endeavor XF 80A	20 - 60	80	37 - 17	110-52	2.1 - 1.0	6-6.5	19.7-21.33	19 - 20	380x180	15 x 7.1	1680	59.3





# ENDEAVOR XF

## Performance That Lasts a Lifetime

The Endeavor XF spotting scope boasts excellent optical viewing for hunters. All models feature a rubber armored magnesium body, are waterproof submersible, nitrogen filled and fogproof. The lenses are all fully multi-coated to ensure optimum light transmission and feature a phase-coated BAK4 porro prism. It also provides a very impressive field of view. A built-in sunshield is included to eliminate glare in direct sunlight, as well as a padded raincoat with sling for carry and protection. All models are equipped with a large, smooth focusing wheel for quick focusing adjustments.



Waterproof & Fogproof



Exceptional Low Light Performance



Multi-Coated Lenses



Anti-Reflection Coating



Large Precise Focus Wheel



Built-In Sunshield



Large Comfortable Eye Piece



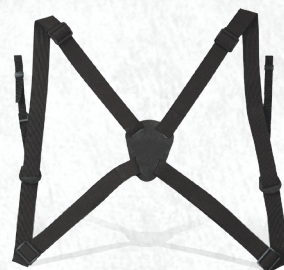
## OPTICS ACCESSORIES



**PA-202 Spotting Scope  
Camera Adaptor**



**BA-185 Binocular  
Tripod Adaptor**



Also in CAMO

**Optic Guard  
Binocular Harness**

## OPTICS CLEANING KITS



**CK6N1 Cleaning Kit**



**CK3N1 Cleaning Kit**



**CK2N1 Cleaning Kit**



**PLC Cleaning Kit**



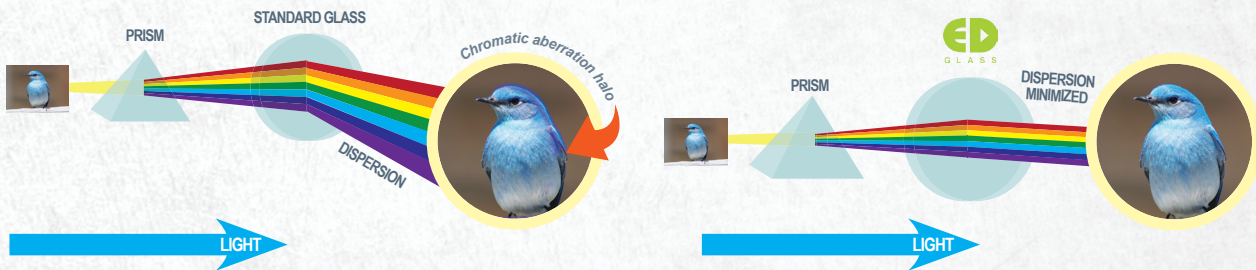
**ULC Cleaning Kit**



## What is Extra-Low Dispersion Glass (ED Glass)?

Dispersion measures how widely colors are spread out by the prism when light passes through it. Cooler colors in the spectrum, such as blues, have shorter wavelengths and are bent the most, so they hit the eye at a different interval than warmer colors, which creates a chromatic aberration, or abnormality. Visually, these abnormalities appear as a blue or violet halo around objects.

Extra-low Dispersion alleviates this problem by delivering all wavelengths to the eye at the same time, resulting in the spectrum of light being seen simultaneously in sharp, crisp contrast.



## Coatings

### P2 Phase coating

Developed for enhanced image clarity and true color reproduction, P2 Phase Coating treatment to BaK4 prisms creates crystal clear images and high resolution observation.

### V-Max coating

V-Max Silver Coating is among the most cutting-edge lens treatments in optics, providing crisper, more vivid images and sharper contrast due to impressive light reflection.

### Anti-reflection

AR Coating on all air-to-surface lenses dramatically minimizes light reflection on the lens. Coupled with fully multi-coated treatment, it ensures near perfect light transmission and image recognition, enabling the brightest images possible, even on the sunniest days.

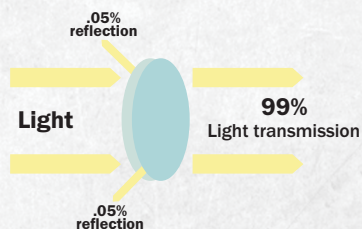
### Emerald Coating

Specially formulated lens coating which provides maximum light transmission

### WATER PROOF

Nitrogen charged and O-ring sealed, waterproofing and fogproofing to take on challenging weather conditions.

### FULLY MULTI-COATED LENSES



Non-coated optical glass reflects 10% of the light, allowing only about 90% of the light to pass through. Adding a single layer coating on the lens and prism surfaces reduces the level of reflected light to about 4%. Fully multi-coated lenses of 4 or more layers further reduce reflected light and can result in total light transmission through a lens or prism of 99% or more. VANGUARD's optics use between 4 and 10 layers of coatings.





## PRO SERIES

### Loaded with Innovative Features

Pro Series shooting sticks are loaded with innovative features that are quickly setting the industry standard. The Yoke Adjustment System (YAS) offers an adjustable rubber "V" yoke. With a simple push of the button, the head adjusts and locks to 160°, 120° and 80° angles to fit different-sized forearms. Soft rubber fins contour around your firearm's forearm. The head also spins 360° allowing shots from any angle. Its legs include a leg depth scale for water or snow measurement. An ergonomic handle with foam grip provides a comfortable grip. Deluxe, speed clip leg locks offer quick height adjustment. Convertible rubber to metal-spiked feet provide increased stability in extreme conditions. Pro Series is available in tripod, bipod, and monopod models.





M62 includes walking stick handle with compass



3 position adjustable yoke



Adjustable leg angles (tripods only)

	Folded Height		Extended Height		Leg Diameter	# of Sections	Feet	Weight	
	in	mm	in	mm				lbs	g
<b>PRO M62</b>	30.38	770	62	1575	20	3	Rubber	0.79	360
<b>PRO B62</b>	31.13	790	62	1575	20	3	Rubber	1.43	650
<b>PRO T40</b>	20.5	520	40	1015	20	3	Rubber w/ Spike	1.87	850
<b>PRO T68</b>	30.75	780	68	1730	20	3	Rubber w/ Spike	2.42	1110





### 3-in-1

Converts from  
tripod into a  
bipod and a  
monopod



Fins Provide Ultra Secure Grip  
on Firearm and Removable Head  
for Use with Camera



Removable Third Leg  
Brace Has 360-Degree  
Positioning  
(Quest T62U)



All Weather Foam Grips



	Folded Height		Extended Height		Leg Diameter	# of Sections	Feet	Weight	
	in	mm	in	mm				lbs	g
Quest T62U	27.5	700	62	1575	20	3	Rubber	2.2	1000
Quest M49	22	560	49	1245	20	3	Rubber	0.66	300
Quest M62	26.38	670	62	1575	20	3	Rubber	0.77	350
Quest B38	19.13	485	38	965	20	3	Rubber	1.15	520
Quest B62	27.13	690	62	1575	20	3	Rubber	1.43	650





## QUEST SERIES

### The Perfect Shot Every Time

Quest T62U is a tripod, bipod and gunpod all in one durable, heavy gauge aluminum alloy shooting stick. Quest helps you handle the elements with a soft foam, contoured hand grip and anti-slip rubber feet. Its removable U-shaped yoke with rubber fins swivels 360° so you can make shots at every angle without repositioning the shooting stick. Remove the U-shaped yoke and use its universal 1/4" thread bolt with spotting scopes, camcorders or cameras. Best of all, Quest T62U is a great traveler, weighing just over two pounds and folding to less than 2.5 feet in height. Lever leg locks make height adjustment quick and easy.





## SCOUT SERIES

### Take Your Shot From Anywhere, Any Angle

Made of lightweight and durable aluminum alloy, Scout is designed for on-the-go hunters. It is made of lightweight and durable aluminum alloy. Its V-shaped yoke is rubber-lined for greater stability for your gun, and it swivels 360 degrees for shots from any angle. Quick flip leg locks make height adjustment quick and easy. Available as a bipod or monopod.



V-Shaped Gun Pod Yoke Rotates  
360-Degrees



Adjustable Strap (Bi-Pod Models Only)



All Weather Foam Grips

	Folded Height		Extended Height		Leg Diameter	# of Sections	Feet	Weight	
	in	mm	in	mm				lbs	g
<b>Scout M62</b>	22	560	62	1575	20	4	Rubber	0.57	260
<b>Scout B62</b>	22.25	565	62	1575	20	4	Rubber	1.1	500



# UNI-STIK

## Lightweight. Durable. Adaptable.

Lightweight, compact Uni-Stik is a handy shooting support that can be used as a stand-alone monopod while seated or kneeling, or in combination with tripod shooting sticks for additional stability. For use as a monopod, Uni-Stik features an attachment clamp with 90-degree lateral tilt that can be fixed to firearm barrels up to 26mm, while its V-shaped rubber yoke serves as a firm base. When using with a shooting tripod, clamp Uni-Stik to your tripod's leg, and use its V-shaped yoke as a rest for your firearm's stock. This texturized yoke also allows for 360-degree rotation for easy positioning. What's more, removing Uni-Stik's V-shaped yoke reveals a universal 1/4" attachment screw for use with spotting scopes for long range hunting or a camera or camcorder to document your hunts. Uni-Stik is easy to transport and setup too, with quick flip leg locks and an ergonomic foam rubber grip and wrist strap.



90 degree lateral tilt axis  
clamp supports up to 26mm barrels



	Folded Height		Extended Height		Leg Diameter	# of Sections	Feet	Weight	
	in	mm	in	mm				lbs	g
Uni-Stik	20.25	515	39.75	1010	20	3	Rubber	0.9	0.41



# EQUALIZER

## Keep Your Shot Steady and Your Profile Low

Compact and lightweight, Equalizer is a big hit for those wanting a pivoting bipod with a low profile for quick deployment. It has a unique Pull and Position leg adjustment system that enables you to quickly and safely reposition. A buffer spring reduces shock and vibration while providing a solid shooting base. It has a pivot tilt of 0 to 5 degrees and a -30 to +30-degree swing angle. Metal spiked feet easily convert to rubber and provide extra stability in multiple terrains.



*Legs retract easily with one quick action*

	Folded Height		Extended Height		Leg Diameter	# of Sections	Feet	Weight	
	in	mm	in	mm				lbs	g
Equalizer 1	9.5	240	13	330	14	2	Rubber w/ Spike	0.74	335
Equalizer 2	12.75	325	27	685	17	3	Rubber w/ Spike	0.95	430
Equalizer 3	16	405	36	915	17	3	Rubber w/ Spike	1.07	485



*Quick shoe system for extremely fast firearm attachment*

# EQUALIZER QS

## Attach and Detach Your Firearms Faster

Equalizer QS has a picatinny rail system that allows shooters to attach and detach firearms faster than ever. Hunters appreciate its quick leg deployment. Its Pull and Position leg adjustment system enables you to quickly and safely reposition. A buffer spring reduces shock and vibration while providing a solid shooting base. It has a pivot tilt of 0 to 5 degrees and a -30 to +30-degree swing angle. Equalizer QS takes on an array of terrains with feet that convert from metal spikes to rubber. Models enable various shooting positions from prone to sitting or kneeling.

	Folded Height		Extended Height		Leg Diameter	# of Sections	Feet	Weight	
	in	mm	in	mm				lbs	g
Equalizer 1QS	6	176	10	254	14	2	Rubber w/ Spike	0.71	320
Equalizer 2QS	11	277	28	715	17	3	Rubber w/ Spike	0.96	435



# EQUALIZER PRO

## A Pivoting Bi-Pod Designed by and for Professional Hunters

Equalizer Pro is Vanguard's best pivoting bipod, designed by professional hunters around the world. Set up or take down Equalizer Pro with one hand in under one second! It also enables you to find an extremely precise position. It features a three-way pivoting head including forward and backward and -30 to +30-degrees side-to-side movement. Fully retract the legs in a flash with the press of a button. Precise height adjustment is quick and efficient, too. Simply pull the leg to move and lock into place. Equalizer Pro features a quick-attach picatinny rail system with two adaptors. It's made of lightweight aluminum and boasts large, textured all-terrain feet for stable support on any shooting surface.



Wide cleated rubber foot



Simply pull leg down for height adjustment & push lever to retract



Bonus 2nd picatinny rail quick shoe included

*All Vanguard picatinny quick shoes and adapters can be used interchangeably with other Vanguard picatinny products*



	Folded Height		Extended Height		Leg Diameter	# of Sections	Feet	Weight	
	in	mm	in	mm				lbs	g
Equalizer Pro 1	8.5	215	10	255	14	2 (2 levels)	Rubber	1.09	500
Equalizer Pro 2	10	255	13	330	14	2 (4 levels)	Rubber	1.21	500





## PORTA-AIM

### Stable, Portable Shooting Support

Constructed of rugged aluminum, Porta-Aim gun rest provides stable shooting support in an easily portable device for the fast-action hunter. Porta-Aim enables users to get on target—and stay there—with a 360-degree swiveling bag.



*Anti-vibration pillow*



*Quick single-handed height adjustment ring*



*Compact for easy packing*

	Length		Width		Height		Weight		Head Movement
	in	mm	in	mm	in	mm	lbs	kg	
Porta-Aim	12.25	310	5.75	145	8.88 - 12.63	225~320	1.76	0.8	(-0° to 360° Swivel)



# STEADY-AIM

## Simplify Sighting

Steady-Aim gun rest simplifies sighting in firearms or performing routine cleaning and maintenance. It has a heavy duty 1.5-inch steel construction and smooth precise micro elevation adjustment. The large central elevation adjustment dial provides a -5 to +20-degree angle range of movement getting users on target in almost any range position. An anti-vibration bag securely holds a rifle's forearm and leather sling cradles the stock. Anti-slip rubber feet convert to spikes for on-the-ground shooting.



Elevation can be adjusted at micro and macro increments



Durable 1.5" steel construction



	Length		Width		Height		Weight		Head Movement
	in	mm	in	mm	in	mm	lbs	kg	
Steady-Aim	22.5	570	12.25	310	5.88	150	8.8	4	-5° to +20° Tilt



# HUGGER RIFLE SLINGS

## Keep Your Rifle Close and Your Trigger Finger Closer

Hugger rifle slings features one-handed adjustable thumb loops and metal swivel attachments.



### Hugger 310C/310ZBR

- Nylon / Cordora
- Color: 310C = Black / 310ZBR = Brown Camo
- Metal swivel
- Finished edge
- Full Rubber 'V' Padded
- Rapid one hand adjustment



### Hugger 230C

- Rubber
- Color: Black
- Metal swivel
- Finished edge
- Water resistant
- Superior grip
- Integrated rubber shock



### Hugger 220C/220Z

- Neoprene
- Color: 220C = Black / 220Z = Brown Camo
- Metal swivel
- Finished edge
- Soft, contoured shoulder padding



### Hugger 130C

- Rubber
- Color: Black
- Metal swivel







## Hugger 110C/110Z

- Elastic Nylon / Neoprene
- Color: 110C = Black / 110Z = Brown Camo
- Metal swivel
- 4 rifle cartridge holder



## Hugger 100C/100ZBR

- Neoprene
- Color: 100C = Black / 100ZBR = Hi-Def Hardwoods
- Metal swivel
- Finished edge



## Hugger 050C

- Mil-spec elastic
- Color: Black
- Metal swivel



# HUNTING ACCESSORIES



## U-YOKE

- Fins provide ultra secure grip on firearm



## YAS

- 3 position adjustable yoke



## QS Picatinny rail

- Quick shoe system for extremely fast firearm attachment





## ABEO VIDEO

### Stability for Optimal Performance

ABEO delivers the total support you demand, coupled with the versatility and ease of use you deserve. Its unique Quick Height Adjustment central column lets you instantly adjust the position of your camera or spotting scope with minimal effort. Over time, normal wear and tear can start to take a toll on ordinary flip locks, but with ABEO, simply tighten the adjustable leg locks to the desired tension for peak performance. Fluid pan heads offer smooth panning for optimal results.





Quick & easy-to-use leg angle button



Quick-flip leg locks



Adjustable leg angles

	Folded Height		Extended Height		Min. Extended Height		Leg Diameter		Weight		Max. Loading		# of Sections	Head	Quick Shoe
	in	mm	in	mm	in	mm	mm		lbs	kg	lbs	kg			
<b>ABEO 323AVP</b>	31.75	805	75	1905	60.8	1545	32		8.25	3.74	13.2	6	3	PH-123V	QS-67
<b>ABEO 283AV</b>	28.38	720	66.5	1690	57.63	1470	28		5.51	2.5	8.8	4	3	PH-114	QS-66
<b>ABEO 243AV</b>	26.63	675	61.75	1570	53.13	1350	24		4.51	2.05	8.8	4	3	PH-113	QS-66
<b>ABEO 203AV</b>	25	635	61.63	1565	50.25	1275	20		3.43	1.56	4.4	2	3	PH-111	QS-66





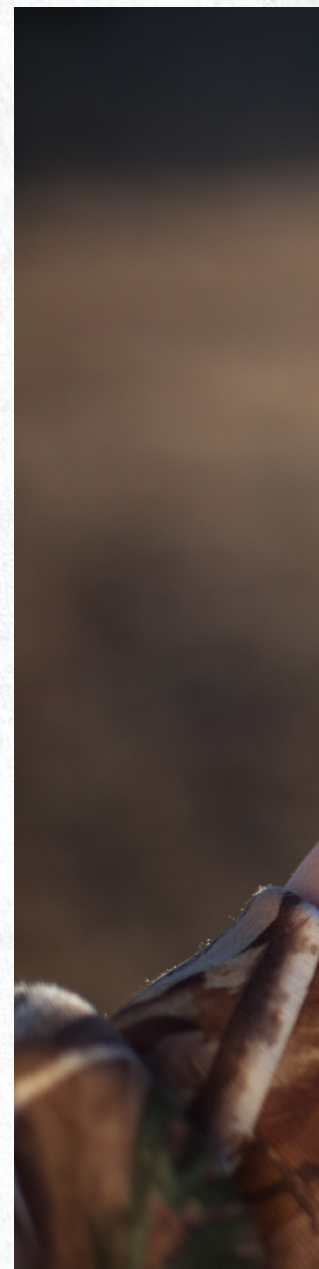
Quick & easy-to-use leg angle button



Anti-shock rings help protect your gear if center column accidentally drops



Adjustable leg angles



	Folded Height		Extended Height		Min. Extended Height		Leg Diameter	Weight		Max. Loading		# of Sections	Head	Quick Shoe
	in	mm	in	mm	in	mm		lbs	kg	lbs	kg			
Alta + 233AO	24	610	57.13	1450	46.63	1185	23	3.53	1.6	6.6	3	3	PH-21	QS-52
Alta + 264AO	25.38	450	70.13	1780	59.63	1515	26	4.63	2.1	11	5	4	PH-31	QS-52
Alta + 263AGH	26.38	670	64.63	1640	51.5	1310	26	9.47	4.3	24.2	11	3	GH-100	QS-65GH





## ALTA +

### **Lightweight. Compact. Reliable.**

Hailed as the world's most lightweight and compact high-quality tripods, Vanguard Alta+ tripods were designed to meet the most demanding requirements - all in a sleek, modern design. Alta+ is perfect for air travel and backpacking combining the stability, durability, easy of use and reliability every spotting scope user needs.





## ALTA CA

### A Sleek, Dependable Tripod

The Alta CA series tripod is ideal for enthusiast outdoorsmen who need a compact, lightweight tripod with superior design features. Its magnesium alloy body and angled rubber feet provide the stability necessary for mounting professional grade optics. Featuring 4-step leg angles, quick-flip leg locks, and an anti-shock ring, this tripod offers added protection during quick setups.





**NEW**



Adjustable grip handle  
(AGH Models)



Ergonomic grips & lock mechanism  
(AP & AO Models)



Anti-shock rings help protect your gear  
if center column accidentally drops

	Folded Height		Extended Height		Min. Extended Height		Leg Diameter	Weight		Max. Loading		# of Sections	Head	Quick Shoe
	in	mm	in	mm	in	mm		lbs	kg	lbs	kg			
Alta CA 233AGH	24.8	630	61.61	1565	49.21	1250	23	3.54	1.61	11.02	5	3	GH-30	QS-36
Alta CA 233AP	24.25	615	61.02	1550	48.62	1235	23	3.32	1.51	11.02	5	3	PH-33	QS-36
Alta CA 203AGH	24.8	630	61.61	1565	49.25	1250	20	3.41	1.55	11.02	5	3	GH-30	QS-36
Alta CA 203AP	24.25	615	61.02	1550	48.62	1235	20	3.19	1.45	11.02	5	3	PH-33	QS-36
<b>NEW</b> Alta CA 233AO	22.8	580	60.6	1540	48.03	1220	23	3.48	1.58	3.48	3	3	PH-30	QS-36
<b>NEW</b> Alta CA 203AO	22.6	575	60.6	1540	48.03	1220	20	3.09	1.40	3.09	2	3	PH-20	QS-36





Smooth flexible movement  
(AGH Models)



Dual panning system  
(AP Models)



Angled rubber feet



	Folded Height		Extended Height		Min. Extended Height		Leg Diameter		Weight		Max. Loading		# of Sections	Head	Quick Shoe
	in	mm	in	mm	in	mm	mm		lbs	kg	lbs	kg			
<b>Espod CX 203AGH</b>	23.22	590	61.02	1550	47.83	1215	20		2.71	1.23	7.71	3.5	3	GH-20	QS-29
<b>Espod CX 233AGH</b>	23.22	590	61.02	1550	47.83	1215	23		2.71	1.23	7.71	3.5	3	GH-20	QS-29
<b>Espod CX 203AP</b>	22.63	575	61.02	1550	47.24	1200	20		2.42	1.1	7.71	3.5	3	PH-23	QS-29
<b>Espod CX 233AP</b>	22.63	575	61.02	1550	47.24	1200	23		2.53	1.15	7.71	3.5	3	PH-23	QS-29





## ESPOD CX

### Sturdy Yet Lightweight – A Tripod for Every Occasion

Espod CX is a must-have for outdoor enthusiasts who need a sturdy, yet lightweight and compact aluminum tripod. Quick-flip leg locks with angled rubber feet enable repositioning in just seconds while maintaining traction and stability. The anti-shock rubber ring protects your equipment against accidental drops, and the anti-spin central column keeps your gear locked into position while adjusting for different heights. Weighing under 3lbs, Espod CX is great for anyone on the go.



# ESPOD CX 1 & 10S

## Sturdy. Stable. Precise.

Espod CX 1 OS is made for hikers and hunters who need a dependable tripod that is compact and light enough to pack with heavy gear. It has a detachable window mount with a 3-way pan head, quick release quick shoe, and aluminum legs with rubber feet. Espod CX 1 is a compact tripod that is ideal for outdoor enthusiasts carrying a lot of gear. It securely holds cameras and spotting scopes, yet maintains a lightweight design so you can tote it with you on a hike or hunt. It has a 2-way pan head and easy-adjust aluminum alloy legs with quick flip leg locks and rubber feet.



Detachable window mount  
(10S Model)



Quick release quick shoe  
(10S Model)



Quick flip leg locks



	Folded Height		Extended Height		Max. Loading		# of Sections	Feet	Weight	
	in	mm	in	mm	lbs	kg			lbs	g
<b>NEW</b> Espod CX 1	11.3	290	22.6	575	5.5	2.5	3	Rubber	1.48	670
<b>NEW</b> Espod CX 10S	15	380	24.6	625	6.6	3	3	Rubber	2.12	960



# TABLE PODS

## Compact Convenience

The VS-82 tripod is ultra-compact, lightweight and convenient.



	Folded Height		Extended Height		Leg Diameter	Weight		Max. Loading		# of Sections
	in	mm	in	mm		oz	g	lbs	kg	
VS-82	9	230	9.84	250	20	13.8	390	5.5	2.5	2



Mounted on tripod column



# WINDOW MOUNTS

## Effortless Panning Without the Tripod

No tripod? PH pan head window mounts have unique bases and non-slip platforms. They easily attach to vehicle windows, tripods, tubular structures, blinds and others, enabling steady use of cameras, camcorders or spotting scopes for effortless panning.

	Lateral Tilt	Frontal Tilt	Rotation	Clamp		Weight		Max. Loading		Height		Quick Shoe
	°	°	°	in	mm	lbs	g	lbs	kg	in	mm	
PH-222	(+90° to -60°)	(0° to +90°)	360°	0.51	13	1.4	620	4.4	2	5.88	150	QS-36
PH-201	(+90° to -60°)	NA	360°	0.39	10	1.5	700	6.6	3	6.88	175	NA
PH-304	(+90° to -60°)	(0° to +90°)	360°	1.25	32	1.6	730	8.8	4	5.75	145	QS-36





 **AIRPLANE APPROVED**



Foam padding with  
hook & loop straps



Key lock latches



Scratch-resistant exterior



	Outside Dimensions		Inside Dimensions		Weight		Exterior	Lock Style	Description
	in	mm	in	mm	lbs	kg			
<b>Outback 30C</b>	16.14 x 8.86 x 4.92	410 x 225 x 125	15.35 x 8.07 x 4.33	390 x 205 x 110	3.55	1.61	600D polyester + PE	Numeric locks + pad lock receptacles	Double Pistol Case
<b>Outback 36C</b>	17.72 x 13.78 x 4.92	450 x 350 x 125	16.93 x 12.99 x 4.33	430 x 330 x 110	4.81	2.18	600D polyester + PE	Numeric locks + pad lock receptacles	Multi Pistol Case
<b>Outback 52C</b>	31.50 x 13.19 x 5.31	800 x 335 x 135	30.71 x 12.40 x 4.72	780 x 315 x 120	7.05	3.2	600D polyester + PE	Numeric locks + pad lock receptacles	Breakdown Shotgun Case
<b>Outback 60C</b>	44.69 x 14.96 x 5.31	1135 x 380 x 135	44.09 x 14.37 x 4.72	1120 x 365 x 120	11.57	5.3	600D polyester + PE	Numeric locks + key lock latches + pad lock receptacles	Tactical Case
<b>Outback 62C/Z</b>	48.82 x 9.06 x 5.31	1240 x 230 x 135	48.03 x 8.27 x 4.72	1220 x 210 x 120	8.97	4.07	600D polyester + PE (62C) Camouflage pattern 600D polyester inlay + PE (62Z)	Numeric locks + key lock latches + pad lock receptacles	Single Rifle Case
<b>Outback 70C/Z</b>	52.56 x 13.39 x 5.31	1335 x 340 x 135	51.77 x 12.60 x 4.72	1315 x 320 x 120	12.19	5.53	600D polyester + PE (70C) Camouflage pattern 600D polyester inlay + PE (70Z)	Numeric locks + key lock latches + pad lock receptacles	Double Rifle Case





# OUTBACK

## Solid and Ready to Go to Work

Airline-approved Outback is ready to go to work for you. It's a solid, composite hard case with the upper and lower lids in one solid piece, free of seams, joinery or fasteners. Constructed of high-density polyethylene material, it has a uniquely-engineered design that absorbs impact by flexing when struck. Outback is lightweight, and its exterior is scratch-resistant. Wide, stable rubber feet stand this case upright to keep the body safely above the ground. You'll appreciate the peace of mind that comes with Outback.





## CLASSIC

### Focus on the Hunt, Not on Your Case

The name says it all. Airline-approved Classic is a good-looking case, but don't let the smooth edges fool you; this case is built to last. This aluminum frame case has dent and scratch-resistant side panels outfitted with a deluxe, chrome-plated handle with a comfortable rubber grip. Its impact-resistant foam interior protects your firearms even in the most rugged conditions. The latches are also chrome plated with pad lock holders. Classic allows you to transport your guns without the worry.





Reinforced metal corners



Key lock latches



Strong heavy duty handle

	Outside Dimensions		Inside Dimensions		Weight		Exterior	Lock Style	Description
	in	mm	in	mm	lbs	kg			
<b>Classic 26C</b>	12.63 x 9 x 4.5	320 x 230 x 115	12 x 8.46 x 4.13	305 x 215 x 105	3.31	1.5	Black ABS	Pad lock receptacles	Single Pistol Case
<b>Classic 30C</b>	16.54 x 9.06 x 4.53	420 x 230 x 115	15.94 x 8.46 x 4.13	405 x 215 x 105	3.86	1.75	Black ABS	Pad lock receptacles	Double Pistol Case
<b>Classic 36C</b>	18.11 x 14.17 x 4.53	460 x 360 x 115	17.51 x 13.58 x 4.13	445 x 345 x 105	5.51	2.5	Black ABS	Pad lock receptacles	Multi Pistol Case
<b>Classic 52C</b>	34.06 x 13.39 x 4.53	865 x 340 x 115	33.46 x 12.80 x 4.13	850 x 325 x 105	9.92	4.5	Black ABS	Key locks + Pad lock receptacles	Breakdown Shotgun Case
<b>Classic 60C</b>	44.69 x 11.61 x 4.53	1135 x 295 x 115	44.09 x 11.02 x 4.13	1120 x 280 x 105	10.58	4.8	Black ABS	Key locks + Pad lock receptacles	Tactical Case
<b>Classic 62C</b>	49.02 x 9.06 x 4.53	1245 x 230 x 115	51.97 x 8.27 x 4.13	1320 x 210 x 105	10.14	4.6	Black ABS	Key locks + Pad lock receptacles	Single Rifle Case
<b>Classic 70C</b>	52.56 x 13.58 x 4.53	1335 x 345 x 115	51.97 x 12.99 x 4.13	1320 x 330 x 105	14.11	6.4	Black ABS	Key locks + Pad lock receptacles	Double Rifle Case





## SUPREME

### Indestructible Strength and Durability

Virtually indestructible, the rugged Supreme Series has innovative features for unmatched strength and durability. It's O-ring sealed, waterproof (up to a depth of 16.5 feet/5 meters), airtight and built to withstand the most extreme conditions (-40°F/-40°C to 203°F/95°C). Supreme is great for airline travel, with an automatic pressure equalization valve and ability to support up to 265 lbs/120 kg. of exterior weight. Anti-slip rubber feet and a solid carrying handle offer extra durability. Thick, quick-release latches lock in place and steel-reinforced lock holders are great for use with pad locks for added security. Supreme has dense, customizable hexagon-shaped foam for an extremely tailored, custom fit for gear.



Water & dust proof



Incredibly strong and rugged



Pressurized equalization valve for airline travel

	Outside Dimensions		Inside Dimensions		Weight		Max. Loading	
	in	mm	in	mm	lbs	kg	lbs	kg
<b>Supreme 27F</b>	11.02 x 9.84 x 6.69	280 x 250 x 170	11.02 x 9.84 x 6.69	250 x 190 x 150	4.19	1.9	33	15
<b>Supreme 37F</b>	16.34 x 9.25 x 7.68	415 x 235 x 195	16.34 x 10.24 x 6.89	380 x 260 x 175	8.6	3.9	44	20
<b>Supreme 38F</b>	18.31 x 14.37 x 4.92	465 x 365 x 125	16.93 x 11.61 x 4.13	430 x 295 x 105	7.05	3.2	26	12
<b>Supreme 40F</b>	18.31 x 14.37 x 7.68	465 x 365 x 195	16.93 x 11.61 x 6.89	430 x 295 x 175	9.7	4.4	55	25
<b>Supreme 46F</b>	20.28 x 17.13 x 8.66	515 x 435 x 220	18.90 x 14.57 x 7.87	480 x 370 x 200	14.99	6.8	66	20
<b>Supreme 53F</b>	24.80 x 20.47 x 9.45	630 x 520 x 240	22.05 x 17.72 x 7.87	560 x 450 x 200	22.93	10.4	77	35



# VGP

## Fully Protected Without Breaking the Bank

There's a good reason VGP is a top selling universal hard case: durable and strong, it has a solid aluminum alloy frame with a sleek, professional style. The interior has adjustable dividers and/or customizable foam for a secure fit for your gear. It boasts a comfortable handle and removable reinforced carrying strap. VGP also includes dual locks with two keys.



Adjustable dividers and/or customizable foam  
(VGP-13 includes both, all others have customizable foam only)



Key lock latches



Reinforced metal corners



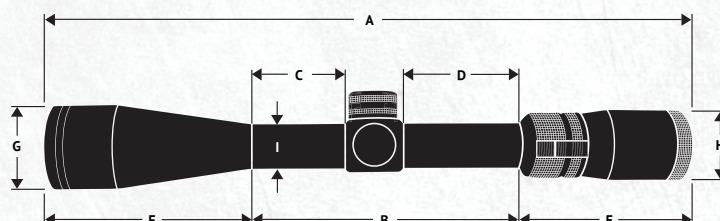
	Outside Dimensions		Inside Dimensions		Weight		Max. Loading	
	in	mm	in	mm	lbs	kg	lbs	kg
VGP-3200	9.45 x 7.48 x 3.94	240 x 190 x 100	8.66 x 6.89 x 3.35	220 x 175 x 85	2.42	1.1	6.6	3
VGP-3201	11.81 x 7.48 x 3.94	300 x 190 x 100	11.22 x 6.89 x 3.35	285 x 175 x 85	2.76	1.25	11	5
VGP-3202	12.87 x 10.24 x 5.12	330 x 260 x 130	12.40 x 9.65 x 4.53	315 x 245 x 115	4.14	1.88	18	8
VGP-13	18.12 x 12.75 x 6.75	460 x 325 x 170	17.5 x 12.12 x 6	445 x 310 x 150	14.33	6.5	44	20



# SPORTING OPTICS COMPARISON CHARTS

## Rifle Scopes

	A		B		C		D		E		F		G		H		I	
	in	mm	in	mm	in	mm	in	mm	in	mm	in	mm	in	mm	in	mm	in	mm
Endeavor RS 41240	14.4	365	6.5	165	2.4	61	2.7	68	3.4	86	4.3	109	1.87	47	1.57	40	1	25
Endeavor RS 351050	13.2	335	5.5	139	1.8	45	2.2	56	3.4	86	4.4	111	2.3	58	1.57	40	1	25
Endeavor RS 30940	12.4	315	5.4	137	1.9	48	2.1	53	3.4	86	3.6	91	1.87	47	1.57	40	1	25



## Binoculars

	Power	Diameter of Objective mm	Field of View		View Angle °	Near Focus		Eye Relief mm	Dimension (L x W)		Weight		Adjustable Pupillary mm
			m/1000m	ft/1000yds		m	ft		mm	in	g	oz	
Endeavor ED II 8320	8	32	126	377	7.2	1.8	5.9	17.5	132 x 128	5 1/4 x 5	540	19.0	55 - 74 mm
Endeavor ED II 8420	8	42	126	377	7.2	2.0	6.6	19.5	154 x 130	6 1/8 x 5 1/8	770	27.1	58 - 74 mm
Endeavor ED II 1042	10	42	114	340	6.5	2.0	6.6	18.5	154 x 130	6 1/8 x 5 1/8	770	27.1	58 - 74 mm
Endeavor ED 8320	8	32	126	377	7.2	2	6.6	17.5	132 x 128	5.19 x 5	480	16.9	55 - 74 mm
Endeavor ED 8420	8	42	122	367	7	2	6.6	19	154 x 130	5.13 x 6	730	25.8	58 - 74 mm
Endeavor ED 1042	10	42	114	340	6.5	2.5	8.2	16.5	154 x 130	5.13 x 6	730	25.8	58 - 74 mm
Spirit ED 8360	8	36	122	367	7	2	6.6	17	125 x 120	4.88 x 4.75	530	18.7	55 - 75 mm
Spirit ED 8420	8	42	110	330	6.3	2.5	8.2	19	145 x 125	5.75 x 4.88	640	22.6	55 - 75 mm
Spirit ED 1042	10	42	105	314	6	2.8	9.2	16	145 x 125	5.75 x 4.88	640	22.6	55 - 75 mm
Spirit ED 1050	10	50	98	293	5.6	3	9.8	19	165 x 135	6.5 x 5.38	845	29.8	59.5 - 74 mm
Spirit XF 8420	8	42	136	409	7.8	2.1	6.9	20	150 x 130	5.88 x 5.13	700	24.7	57 - 74 mm
Spirit XF 1042	10	42	111	332	6.35	2.1	6.9	16	150 x 130	5.88 x 5.13	665	23.4	57 - 74 mm
Orros 8250 (compact)	8	25	114	340	6.5	2.5	8.2	12.5	110 x 120	4.38 x 4.75	280	9.9	58 - 72 mm
Orros 1025 (compact)	10	25	110	330	6.3	2.5	8.2	10	115 x 120	4.5 x 4.75	280	9.9	58 - 72 mm
Orros 8320	8	32	122	367	7	2.1	6.9	16	130 x 125	5.13 x 4.88	510	18	58 - 74 mm
Orros 8420	8	42	109	327	6.25	2.1	6.9	21	145 x 130	5.75 x 5.13	600	21.2	58 - 74 mm
Orros 1042	10	42	100	298	5.7	2.1	6.9	18	145 x 130	5.75 x 5.13	600	21.2	58 - 74 mm

## Spotting Scopes

	Power	Diameter of Objective mm	Field of View		View Angle °	Near Focus		Eye Relief mm	Dimension (L x W)		Weight	
			m/1000m	ft/1000yds		m	ft		mm	in	g	oz
Endeavor HD 65A	15 - 45	65	48 - 23	144 - 68	2.75 - 1.3	4.5 - 5.5	14.8 - 18	19 - 20	345 x 175	13.6 x 6.9	1450	51.1
Endeavor HD 65S	15 - 45	65	48 - 23	144 - 68	2.75 - 1.3	4.5 - 5.5	14.8 - 18	19 - 20	350 x 120	13.8 x 4.8	1450	51.1
Endeavor HD 82A	20 - 60	82	37 - 17	110 - 52	2.1 - 1.0	6 - 6.5	19.7 - 21.33	19 - 20	375 x 180	14.8 x 7.1	1890	66.7
Endeavor HD 82S	20 - 60	82	37 - 17	110 - 52	2.1 - 1.0	6 - 6.5	19.7 - 21.33	19 - 20	375 x 180	14.8 x 7.1	1890	66.7
Endeavor XF 60A	15 - 45	60	47 - 23	141 - 68	2.7 - 1.3	5 - 6	16.4 - 19.7	19 - 20	350 x 180	13.8 x 7.1	1280	45.2
Endeavor XF 80A	20 - 60	80	37 - 17	110 - 52	2.1 - 1.0	6 - 6.5	19.7 - 21.33	19 - 20	380 x 180	15 x 7.1	1680	59.3



# HUNTING ACCESSORIES COMPARISON CHARTS

## Shooting Sticks

	Folded Height		Extended Height		Leg Diameter	# of Sections	Feet	Weight	
	in	mm	in	mm				lbs	g
PRO B62	30.38	770	62	1575	20	3	Rubber	0.79	360
PRO M62	31.13	790	62	1575	20	3	Rubber	1.43	650
PRO T40	20.5	520	40	1015	20	3	Rubber w/ Spike	1.87	850
PRO T68	30.75	780	68	1730	20	3	Rubber w/ Spike	2.42	1110
Quest T62U	27.5	700	62	1575	20	3	Rubber	2.2	1000
Quest M49	22	560	49	1245	20	3	Rubber	0.66	300
Quest M62	26.38	670	62	1575	20	3	Rubber	0.77	350
Quest B38	19.13	485	38	965	20	3	Rubber	1.15	520
Quest B62	27.13	690	62	1575	20	3	Rubber	1.43	650
Scout M62	22	560	62	1575	20	4	Rubber	0.57	260
Scout B62	22.25	565	62	1575	20	4	Rubber	1.1	500
Uni-Stik	20.25	515	39.75	1010	20	3	Rubber	0.9	0.41
Equalizer 1	9.5	240	13	330	14	2	Rubber w/ Spike	0.74	335
Equalizer 2	12.75	325	27	685	17	3	Rubber w/ Spike	0.95	430
Equalizer 3	16	405	36	915	17	3	Rubber w/ Spike	1.07	485
Equalizer 10S	6	176	10	254	14	2	Rubber w/ Spike	0.71	320
Equalizer 20S	11	277	28	715	17	3	Rubber w/ Spike	0.96	435
Equalizer Pro 1	8.5	215	10	255	14	2 (2 levels)	Rubber	1.09	500
Equalizer Pro 2	10	255	13	330	14	2 (4 levels)	Rubber	1.21	500

## Tripods

	Folded Height		Extended Height		Min. Extended Height		Leg Diameter	Weight		Max. Loading		# of Sections	Head	Quick Shoe
	in	mm	in	mm	in	mm		lbs	kg	lbs	kg			
ABEO 323AVP	31.75	805	75	1905	60.8	1545	32	8.25	3.74	13.2	6	3	PH-123V	QS-67
ABEO 283AV	28.38	720	66.5	1690	57.63	1470	28	5.51	2.5	8.8	4	3	PH-114	QS-66
ABEO 243AV	26.63	675	61.75	1570	53.13	1350	24	4.51	2.05	8.8	4	3	PH-113	QS-66
ABEO 203AV	25	635	61.63	1565	50.25	1275	20	3.43	1.56	4.4	2	3	PH-111	QS-66
Alta + 233AO	24	610	57.13	1450	46.63	1185	23	3.53	1.6	6.6	3	3	PH-21	QS-52
Alta + 264AO	25.38	450	70.13	1780	59.63	1515	26	4.63	2.1	11	5	4	PH-31	QS-52
Alta + 263AGH	26.38	670	64.63	1640	51.5	1310	26	9.47	4.3	24.2	11	3	GH-100	QS-65GH
Alta CA 233AGH	24.8	630	61.61	1565	49.21	1250	23	3.54	1.61	11.02	5	3	GH-30	QS-36
Alta CA 233AP	24.25	615	61.02	1550	48.62	1235	23	3.32	1.51	11.02	5	3	PH-33	QS-36
Alta CA 203AGH	24.8	630	61.61	1565	49.25	1250	20	3.41	1.55	11.02	5	3	GH-30	QS-36
Alta CA 203AP	24.25	615	61.02	1550	48.62	1235	20	3.19	1.45	11.02	5	3	PH-33	QS-36
Alta CA 233AO	22.8	580	60.6	1540	48.03	1220	23	3.48	1.58	3.48	3	3	PH-30	QS-36
Alta CA 203AO	22.6	575	60.6	1540	48.03	1220	20	3.09	1.40	3.09	2	3	PH-20	QS-36
Espod CX 203AGH	23.22	590	61.02	1550	47.83	1215	20	2.71	1.23	7.71	3.5	3	GH-20	QS-29
Espod CX 233AGH	23.22	590	61.02	1550	47.83	1215	23	2.71	1.23	7.71	3.5	3	GH-20	QS-29
Espod CX 203AP	22.63	575	61.02	1550	47.24	1200	20	2.42	1.1	7.71	3.5	3	PH-23	QS-29
Espod CX 233AP	22.63	575	61.02	1550	47.24	1200	23	2.53	1.15	7.71	3.5	3	PH-23	QS-29



## SOUTHERN BOYZ OUTDOORS



Kinion Bankston founded Southern Boyz Outdoors, a group of outdoor enthusiasts from Southeast Louisiana. The “Southern Boyz” TV show documents many of the fun and enjoyable outdoor adventures Southern Louisiana has to offer. Focused on bringing exciting hunts to their expanding fan base of more than a million, Southern Boyz Outdoors champions education, community service, and the values of the outdoor lifestyle. SBO is rated #1 in social reach and engagement in the Outdoor Industry. To learn more about Southern Boyz Outdoors visit their Facebook page at [facebook.com/southernboyzoutdoors](https://facebook.com/southernboyzoutdoors).

## LARYSA SWITLYK



Understanding how complex hunting and fishing is, and how much there is to learn, Larysa made it her goal to absorb as much as possible about the outdoors and how to conserve and protect it. Now she wants to provide an entertaining and adventurous vehicle for viewers to experience and learn alongside her the importance of conservation, heritage and the true reason people hunt and fish. She wants to unleash us all with her TV show “Larysa Unleashed.” To learn more about Larysa visit her website at [www.larysaunleashed.com](http://www.larysaunleashed.com).

## MICHIGAN OUT OF DOORS

Jenny Olsen | Jimmy Gretzinger | Jordan Browne | Gabe VanWormer



Michigan's premier outdoor show, “Michigan Out of Doors” is a fresh source of education and entertainment to sportsmen and women across the Midwest. Led by Jimmy Gretzinger, Jenny Olsen, Jordan Brown, and Gabe VanWormer the show chronicles the team as they hunt everything Michigan has to offer—deer, coyote, turkey, pheasant, shed antler and small game. They advocate for kids getting kids involved in the outdoors and aspire to spread their love of the sportsman lifestyle to all. To learn more about Michigan Out of Doors visit their website at [www.michiganoutofdoorstv.com](http://www.michiganoutofdoorstv.com).



## BACKSTAGE & BACKROADS

Julie McQueen | Daniel Lee Martin



In March 2004 Daniel Lee celebrated the national release of his debut album, "All That I Am," touring nation-wide to connect with his fans. Julie McQueen just might be the only girl to fly from a fashion photo shoot in France, land in the US, and climb directly into a tree stand. The married couple started their show "Backstage & Backroads" to combine their passions: music, hunting, and cooking. Daniel Lee and Julie have taken the concept of outdoor television to a new level with their realistic approach to relating to the fans. Daniel Lee and Julie motivate and inspire each other to work towards a common goal. "Backstage & Backroads" captures the joy of this big never-ending shindig called life. To learn more about Julie and Daniel Lee visit their website at [www.backstageandbackroads.com](http://www.backstageandbackroads.com).

## RUSSELL GRAVES



If you've read any Texas-based magazines over the past twenty five years chances are you've seen some of Russell's photos or read some of his words. Since 1989, he's been traveling the state telling authentic Texas stories with his camera and his words - both written and spoken. Recently he's worked with such celebrities as the Robertson Family from the Duck Dynasty television show, T. Boone Pickens, Dale Earnhardt Jr., Pat Green, and Tracy Lawrence, but he insists that regular people are his favorite subjects. Currently, Russell lives in the country north of Childress, Texas with his wife Kristy and their two children Bailee and Ryan but still manages to spend a considerable amount of time near his boyhood home north of Dodd City. To learn more about Russell visit his website at [russellgraves.com](http://russellgraves.com).

## BOB HART



Bob Hart was born in to a family tradition of custom gun builders and gunsmiths. He now has taken over the lead role from his father, Wally Hart, at Robert W. Hart and Son Inc. as a 4th generation custom rifle builder. Bob has shot over 13 groundhogs at over 1000 yards. His longest hit was an Elk at 1900 Yards. He has also filmed a number of shots, including African trips with 60" Kudu at over 500 yards. He now works with several television programs including Sportsman of North America, Northwood Adventures, Driven TV, Bass Pro Outdoor World, Bullseye Adventures and Southern Woods Adventures. To learn more about Bob visit [foreverwildoutdoors.com](http://foreverwildoutdoors.com).

## BRETT ROUSSELLE



Brett Rousselle of Whitetail Addicts invites you to join him as he documents his whitetail deer season. From planting food plots to finding sheds, Whitetail Addicts documents Brett as he looks to grow, hold & harvest big bucks... and maybe a few other critters along the way. With his show, Brett welcome you into his life, hoping that his field and life experiences will help you with you and yours. To learn more about Brett visit his website at [www.whitetailaddicts.com](http://www.whitetailaddicts.com)





## About Vanguard

**T**here's nothing like the adrenaline rush in that perfect moment. From your favorite treestand to navigating through rough terrain when it becomes cold, wet and treacherous, you can rely on VANGUARD accessories to be there for you.

Since 1986, VANGUARD has been one of the global leaders in hunting and outdoor accessories, including binoculars, spotting scopes, shooting sticks, tripods, and gun cases with first-of-their-kind features and capabilities. VANGUARD's comprehensive product range meets the needs of a diverse range of all those who enjoy the outdoors, from the hobby birdwatcher to the avid big game hunter.

With ISO 9001 and 14001-certified facilities and hundreds of design patents, VANGUARD has earned a solid reputation that spans the world.

### **Vanguard USA, Inc.**

9157 East M-36  
Whitmore Lake, MI 48189  
P: 800-875-3322  
F: 888-426-7008

**[www.vanguardworld.com](http://www.vanguardworld.com)**