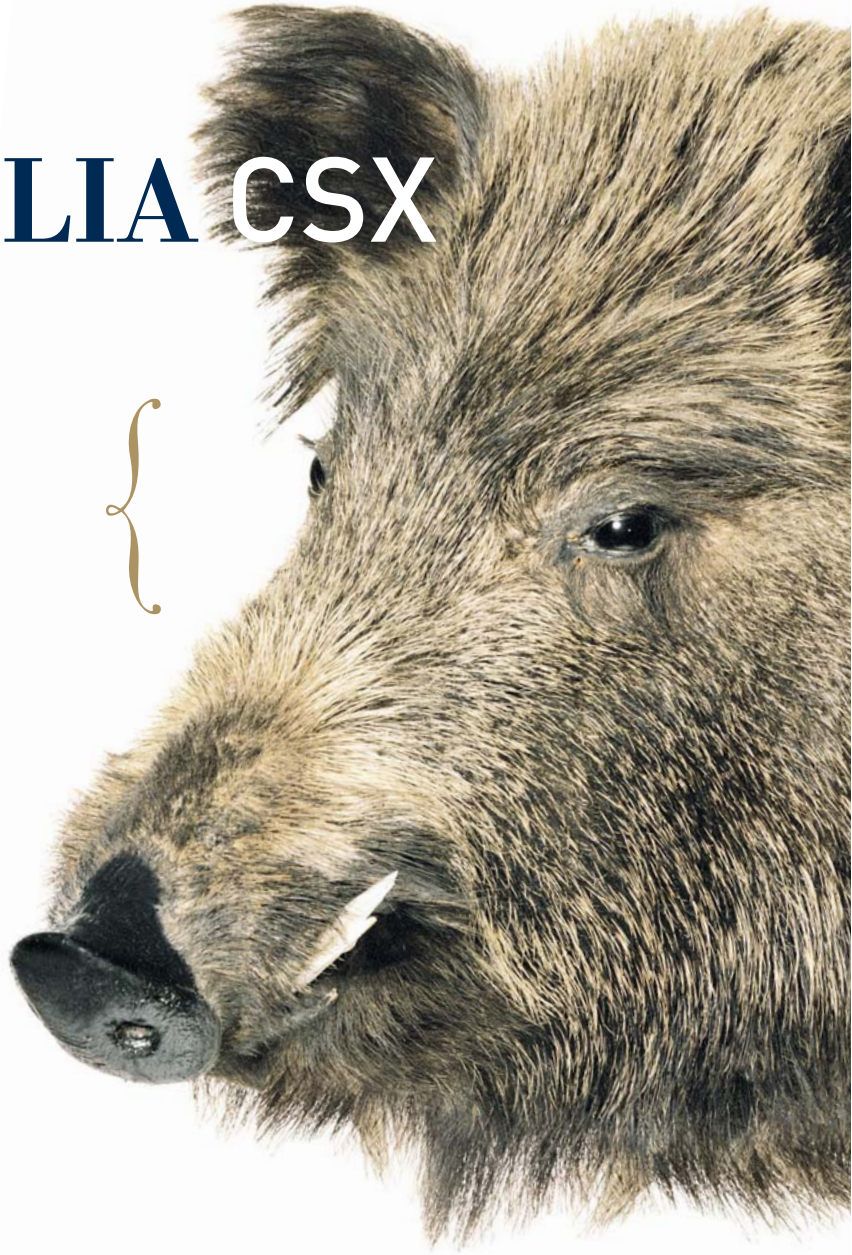




HELIA CSX



” *The secret of success is constancy to purpose.*

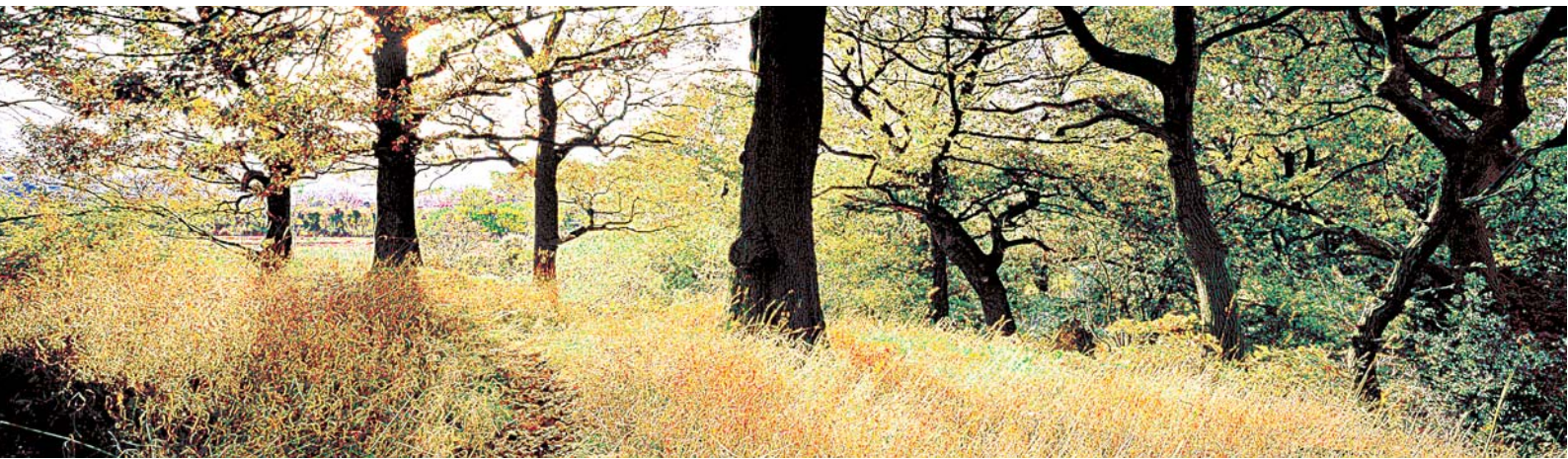
Benjamin Disraeli
British prime minister and author

“



The backtrail, downwind, was the place to make my stand for the smart old boars. Shifting, waiting, I felt the cold creeping up my legs. In the distance was the faint baying of the dogs and the echoing of the drivers' sticks knocking against the frozen tree trunks. Then there was another sound, a soft crunching of the snow. It had an easy jogging rhythm as it came closer down the backtrail. Listening to it, I heard it grow clearer, sharper, nearer, until it was drowned out completely by the beating of my own heart.

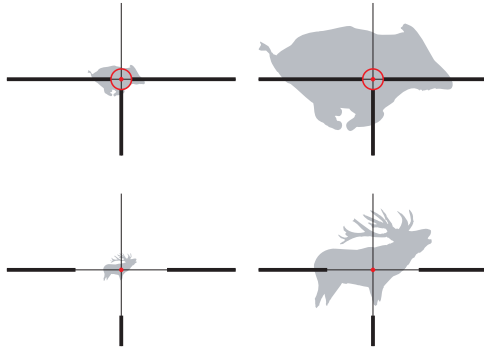




Driven hunts can be extremely demanding on us hunters. Difficult terrain, adverse light conditions, unexpected situations. Quick decisions and fast intuitive operation of an illuminated riflescope device are required. The extremely wide field-of-view of the lightweight HELIA CSX riflescope creates an outstanding overall view and allows you to shoot with both eyes open. Through the innovative CSX digital electronics, the illuminated dot on the reticle can be adapted to the needs of the prevailing light conditions and then, can be stored in stand-by mode. Activated silently by touch control, the illuminated dot guides the eye immediately to the target.

Now, in the moment of truth, you can use all of your skills ...

← HELIA CSX

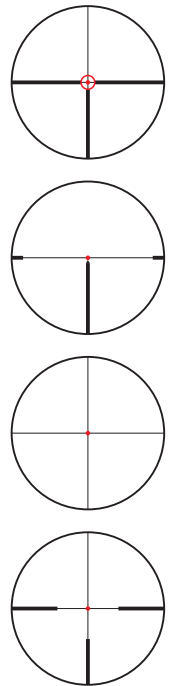


C-Dot
1,1 power at 30 meters
4 power at 30 meters

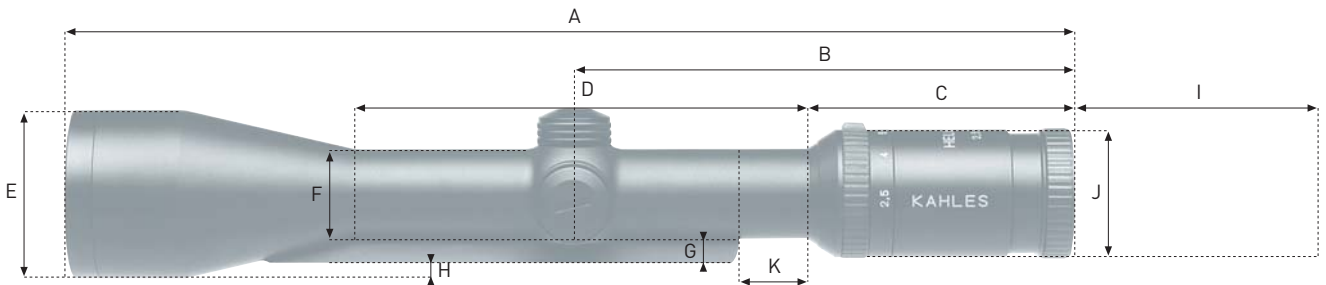
4-Dot
2,5 power at 100 meters
10 power at 100 meters

The CSX reticle is located in the second image focal plane. Since this reticle is non-magnifying, the reticle subtensions become increasingly finer as the magnification is increased. The result: An ideally larger illuminated dot in low magnification for the quick shot and a finer dot in higher magnification for the longer precision shot.

SUBTENSIONS		CSX 1,1-4x24		CSX 1,5-6x42		CSX 2,5-10x50		CSX 3-12x56		
		1,1x	4x	1,5x	6x	2,5x	10x	3x	12x	
C-DOT	Dot	42,1	10,5	28,3	7,1	17,0	4,3	14,2	3,5	cm
		15,16	3,78	10,19	2,56	6,12	1,55	5,11	1,26	in
	Circle Diameter	282	70,5	189,4	47,3	114,2	28,5	95	23,8	cm
		101,5	25,38	68,18	17,03	41,11	10,26	34,20	8,57	in
P-DOT	Dot	35,8	8,9	24,0	6,0	14,5	3,6	12,1	3,0	cm
		12,89	3,20	8,64	2,16	5,22	1,30	4,36	1,08	in
	Opening	3.200	800	2.148	537	1.295	323,7	1.077,7	269,4	cm
		1152	288	773,28	193,32	466,2	116,53	387,97	96,98	in
D-DOT	Dot	42,1	10,5	28,3	7,1	17,0	4,3	14,2	3,5	cm
		15,16	3,78	10,19	2,56	6,12	1,55	5,11	1,26	in
	Thin Section	6,3	1,6	4,2	1,1	2,6	0,6	2,1	0,5	cm
		2,27	0,58	1,51	0,40	0,94	0,22	0,76	0,18	in
4-DOT	Dot	35,8	8,9	24,0	6,0	14,5	3,6	12,1	3,0	cm
		12,89	3,20	8,64	2,16	5,22	1,30	4,36	1,08	in
	Opening	1.663	415,7	116,3	279,1	673	168,3	560,1	140	cm
		598,68	149,65	41,86	100,48	242,28	60,59	201,64	50,4	in



Subtensions in cm at 100m | in inch at 100yds



MEASUREMENTS	A	B	C	D	E	F	G	H	I	J	K
CSX 1,1-4x24	276 10,87	162 6,38	86 3,39	182 7,17	30 1,18	30 1,18	22,5 0,89	— —	90 3,54	43 1,69	20 0,79
CSX 1,5-6x42	305 12,01	162 6,38	86 3,39	151 5,94	48 1,89	30 1,18	22,5 0,89	1,5 0,06	90 3,54	43 1,69	20 0,79
CSX 2,5-10x50	326 12,83	162 6,38	86 3,39	148 5,83	56 2,20	30 1,18	22,5 0,89	5,5 0,22	90 3,54	43 1,69	20 0,79
CSX 3-12x56	356 14,02	162 6,38	86 3,39	164 6,46	62 2,44	30 1,18	22,5 0,89	8,5 0,33	90 3,54	43 1,69	20 0,79

Measurements in mm | in



A HELIA generation of riflescopes that sets new standards.
New standards in optics, electronics and ease of operation.

With a reticle located in the non-magnifying second image focal plane. Extremely visible on any target, but always fine and precise. In any light conditions. The advanced digital CSX lighting technology is unique in design and function. Operation is easy as the control unit is located conveniently in a third turret on the left side of the housing with On-Off activation that functions intuitively comprehensibly and at the same time silently.

HELIA CSX

UNIVERSALLY UNDER CONTROL — DAY AND NIGHT



New standards also in optics: Unsurpassed wide field-of-view with spectacular edge resolution. Rich in contrast and unusually brilliant. Optimized KAHLES AMV coatings take the HELIA even closer to the limits of physics than ever before. Visibly closer, just in the very last shootable light.



Created, designed and built meticulously in the KAHLES plant in Vienna to the highest standards and with the competence of over 100 years. Compact, robust and lightweight, completely waterproof and shockproof like all HELIA generations before it – built for generations.

HELIA CSX riflescopes materialize from a fascinating philosophy of pioneering spirit, conviction and passion. An exclusive masterpiece of hunting optics. A class of its own.



CSX 1,5-6×42 L



CSX 1,1-4×24 L



CSX 1,5-6×42 L



CSX 2,5-10×50 L



CSX 3-12×56 L



HELIA — Greek goddess of the sun

C — Compact

S — Second Image Plane

X — Digital day- and night illumination



Complex optical designs with up to four objective lenses create an extremely broad, edge-defined field-of-view with a freedom of distortion previously unseen in optics.

Optimized KAHLES AMV coatings realize nearly loss free transmission in the critical spectral range of light (around 520 nano-meters). In this way, the optical system extracts the very smallest reserves of light for the lowest light shooting conditions.

Extremely durable housing machined by state-of-the-art production methods from a single piece of high-grade material.

Extremely precise adjustment mechanism creates absolute repeatability.

A spare battery is conveniently located in the windage turret cap.

CSX 2,5-10×50 L

Digital stageless control for day and night lighting, completely silent with memory function and a red indicator ring to identify activation. Different from standard analogue control units, the innovative CSX digital technology realizes an outstanding battery life of up to more than 500 hours.

Robust etched glass reticle in second image plane does not change size with increased magnification. A decisive advantage at a long distance for the long shot.



On



**Click and hold —
brighter/darker**



**Short Click —
Store/Recall
in Stand-by mode**



**Off —
mechanical safety**





Setting Standards. Since 1898.

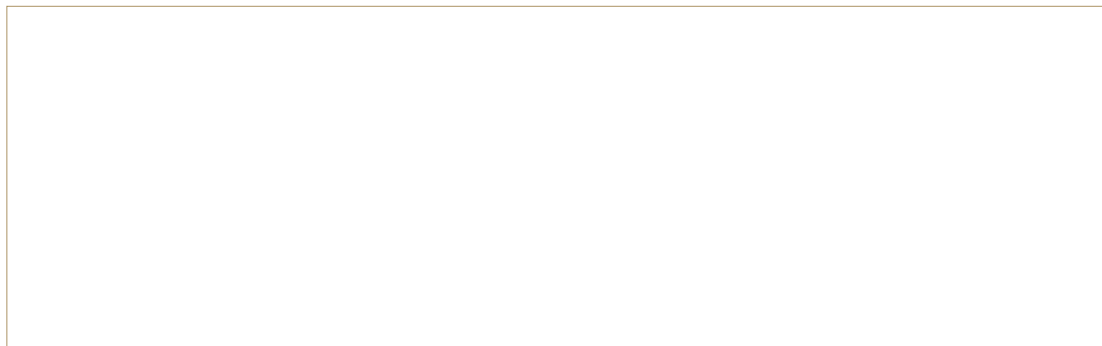


TECHNICAL DATA	CSX 1,1-4×24	CSX 1,5-6×42	CSX 2,5-10×50	CSX 3-12×56	
Magnification	1,1-4	1,5-6	2,7-10	3,2-12	
Obj. lens diameter	24	42	50	56	mm
	0,95	1,65	1,97	2,21	in
Field of view	40-10,6	27-7,1	14,5-4,2	12,5-3,5	m/100m
	120,8-32	81,5-21,5	43,8-12,7	37,8-10,6	ft/100yds
Exit pupil	10,5-6	13,3-7	10,5-5	10-4,7	mm
	0,41-0,22	0,52-0,28	0,41-0,20	0,39-0,19	in
Eye relief	90	90	90	90	mm
	3,6	3,6	3,6	3,6	in
Diopter compensation	+2/-3,5	+2/-3,5	+2/-3,5	+2/-3,5	dpt
Twilight factor	3,5-9,8	5,5-15,9	7,8-22,4	9,5-22,5	DIN 58388
Impact pt. corr. per click	15	10	10	10	mm/100m
	0,54	0,36	0,36	0,36	in/100yds
Elevation/ Windage Adj. Range	3,7	2,4	1,58	1,25	m/100m
	11,17	7,25	4,77	3,78	ft/100yds
Tube diameter	30	30	30	30	mm
	1,18	1,18	1,18	1,18	in
Length	276	305	326	356	mm
	10,87	12,01	12,83	14,02	in
Weight L	440	490	520	580	g
	15,52	17,28	18,34	20,46	oz
Weight LS	465	520	550	610	g
	16,40	18,34	19,40	21,52	oz

L — Aluminum

LS — Aluminum with rail

Subject to change without notice. | 1898200412egCSXcat



KAHLES GmbH

Austria | 1170 Vienna | Zeillergasse 18-22 | Tel.: +43 . 1 . 486 33 55 . 0 | Fax: +43 . 1 . 485 45 63 | info@kahles.at | www.kahles.at

