

Since 2013, Holosun has been committed to creating innovative optic and laser/IR technologies for a broad range of shooting, hunting, law enforcement and military needs. Today, Holosun is at the forefront of developing new innovations such as; up to a 100,000 hr battery life, Solar Fail-Safe™ technology, our signature Multi-Reticle System™ (MRS), and much more.

At Holosun, it's simple. We are obsessed with producing cutting-edge equipment with superior quality, at a price that astounds the customer. After comparing our products to the competition, we believe you'll agree with us when we say that Holosun is "Your Next Optic".



M.R.S.™

The Multi-Reticle System™ allows the user to choose more than one type of reticle without the need for re-zeroing. The user can select the right reticle for the job.

BATTERY LIFE

Holosun optics have the ability to deliver up to 100,000 Hour of continuous battery life at a medium setting.

LOCK MODE

This feature allows the user to disable the button controls to avoid inadvertent button presses, preventing changes to the user's preferred settings.

SOLAR FAIL-SAFE™

No more worrying about your battery failing at the worst moment. Units with this feature have the ability to power themselves with sufficient ambient light regardless if the light source is natural or artificial.

SHAKE AWAKE™

A motion-based on/off feature that allows the optic to conserve power when not in use, but is ready and waiting when you need it.

**Not all features are available on all models.*

CONTENTS

7	DIGITAL RIFLE SIGHTS
15	SOLAR CHARGING SIGHTS
31	ENCLOSED PISTOL SIGHTS
41	OPEN PISTOL SIGHTS
51	RIFLE SIGHTS
63	WEAPONLIGHTS
73	MAGNIFIERS
79	LASERS
86	PRODUCT SPEC SHEETS

SOLAR CHARGING SIGHTS

ENCLOSED PISTOL SIGHTS

OPEN PISTOL SIGHTS

RIFLE SIGHTS

WEAPONLIGHTS

MAGNIFIERS

LASERS

DIGITAL REFLEX SIGHTS





DRS NIGHT VISION



/// ABOUT THIS PRODUCT

The DRS-NV (Digital Reflex Sight-Night Vision) is a red dot and digital night vision fusion sight that combines Holosun's red dot sight technology with digital night vision capability. DRS-NV features an LED MRS (Multi-Reticle System) with two digital reticle options, 1024x768 resolution digital night vision sensor with up to 60fps, 8x digital zoom, digital image and video recording with on-board storage, and is powered by an 18350 rechargeable battery. An on-board USB-C connector enables charging and downloading of recorded images and video.

/// TECH & FEATURES

- Red Dot Sight w/ Fusion Night Vision Overlay
- 60FPS Overlay Refresh Rate
- Digital Zoom Up To 8x
- Internal Video Recording System
- Multiple Reticle System™ (MRS): 65 MOA Circle & 2 MOA Dot; 2 MOA Dot; 65 MOA Circle
- Cross or T Style Night Vision Reticles

/// SPECS

- IP67 Certified Waterproof
- 1x 18350 Battery (DRS-NV Integrated) // 2x 18350 Battery (DRS-NV)
- OLED / Sensor Resolution: 1024 × 768 px
- Reticle Brightness: 8 Daylight & 4 Night Vision Compatible Settings
- Battery Life: 2.5 Hour (DRS-NV Integrated) // 5 Hour (DRS-NV)
- Window Size: 1.25 × 0.98 in

DRS-NV



DRS-NV INTEGRATED



DRS THERMAL



/// ABOUT THIS PRODUCT

The DRS-TH (Digital Reflex Sight-Thermal) is a red dot and thermal fusion sight that combines Holosun's red dot sight technology with thermal imaging capability. DRS-TH features an LED MRS (Multi-Reticle System) with two digital reticle options, 1024x768 resolution display at 50fps, 8x digital zoom, digital image and video recording with on-board storage, and is powered by an 18350 rechargeable battery. DRS-TH models feature five thermal image modes including White Hot, Black Hot, Highlight, Outline, and Fusion modes. DRS-TH is also available in a DRS-TH Pro version that increases the thermal sensor resolution by 33%.

/// TECH & FEATURES

- Red Dot Sight w/ Fusion Thermal Overlay
- 50FPS Overlay Refresh Rate
- Digital Zoom Up To 8x
- Modes: White Hot, Black Hot, Highlight, Outline, Fusion
- Multiple Reticle System™ (MRS): 65 MOA Circle & 2 MOA Dot; 2 MOA Dot; 65 MOA Circle
- Cross or T Style Thermal Vision Reticles

/// SPECS

- IP67 Certified Waterproof
- 1x 18350 Battery (DRS-TH Integrated) / 2x 18350 Battery (DRS-TH / DRS-TH PRO)
- Sensor Resolution: 256x192 (DRS-TH / DRS-TH Integrated) // 384x288 (DRS-TH Pro)
- Reticle Brightness: 8 Daylight & 4 Night Vision Compatible Settings
- Battery Life: 10 Hour (DRS-TH Integrated / DRS-TH Pro) // 20 Hour (DRS-TH)
- Window Size: 1.25 × 0.98 in

DRS-TH



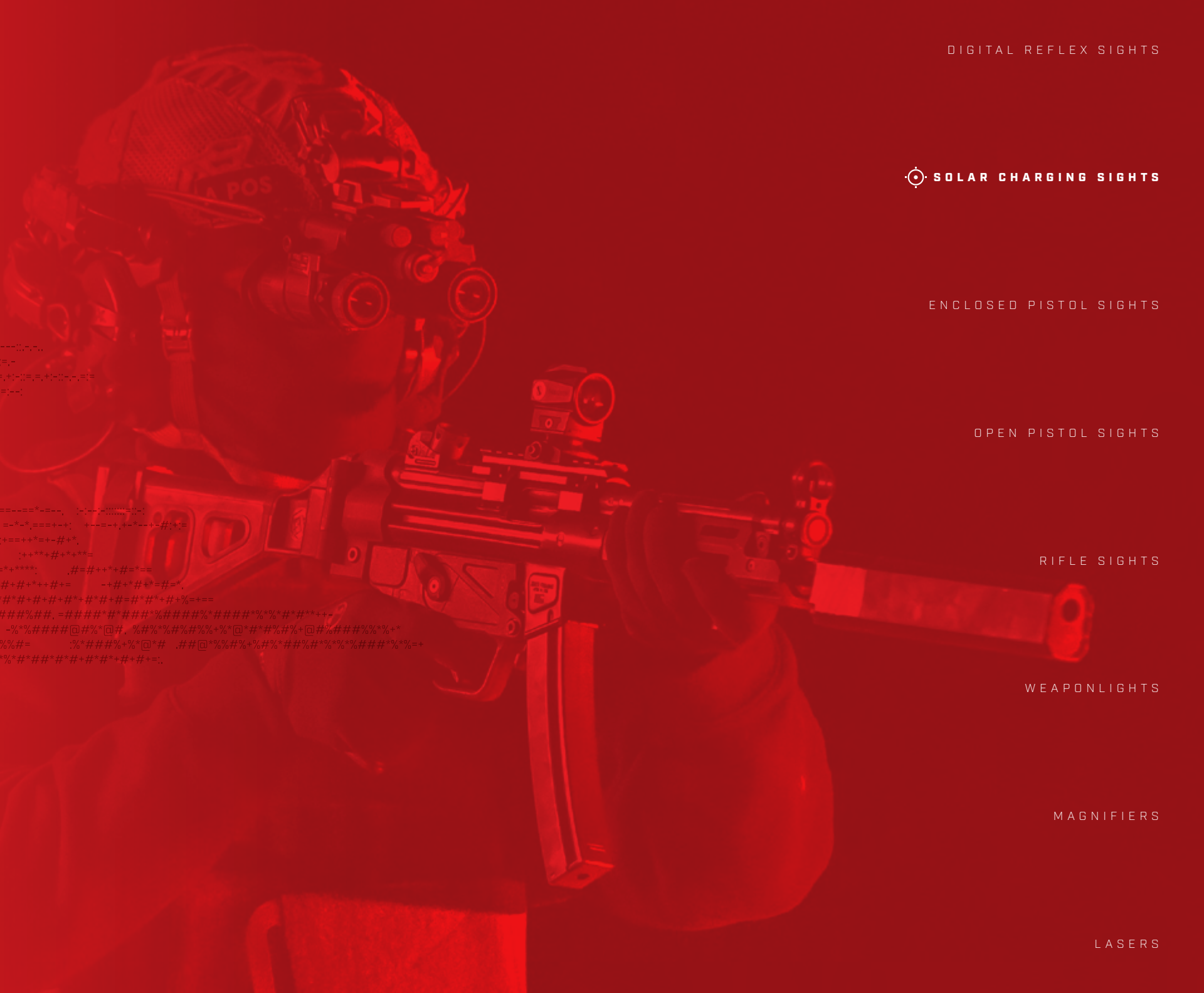
DRS-TH PRO



DRS-NV INTEGRATED



SOLAR CHARGING SIGHTS





SCRS



/// ABOUT THIS PRODUCT

The SCRS (Solar Charging Rifle Sight) advances Holosun's SCS technology creating an all-new, ultra compact 20mm tube sight designed for rifle applications. SCRS features multi-directional light sensors and an advanced Auto Mode for automatic reticle intensity settings and Manual Mode for manual control of dot intensity. SCRS is made from 7075 aluminum and utilizes Holosun's 509T footprint for compatibility with third-party offset RDS mounts. SCRS is available with a 2MOA dot or MRS (Multi-Reticle System) in Red or Green models.

/// TECH & FEATURES

- 20,000-Hour Power Reserve
- Multi-Sensor Auto Brightness
- Solar Charging Internal Battery
- Multiple Reticle System™ (MRS): 65 MOA Circle & 2 MOA Dot; 2 MOA Dot; 65 MOA Circle
- Parallax Free & Unlimited Eye Relief
- Fits Holosun 509T Footprint

/// SPECS

- IP67 Certified Waterproof
- Travel Range ± 50 MOA
- Reticle Brightness: 8 Daylight & 4 Night Vision Compatible Settings
- 1 MOA Windage & Elevation Adjustment Per Click
- Window Size: 22mm Diameter
- 7075 T6 Aluminum Housing
- 1.63" Mount Included

SCRS-MRS-RD



SCRS-MRS-GR



SCRS-GR-2



SCRS-RD-2



SCS-320



/// ABOUT THIS PRODUCT

The SCS-320-GR (Solar Charging Sight) is designed for P320 optics ready handguns and other DPP footprints. It is designed to attach directly to the slide without an adapter plate and uses our solar charging system with multi-directional light sensors to automatically adjust brightness. The SCS can potentially operate indefinitely using an internal, rechargeable 20,000-hour battery meaning you will never need to change batteries again. Included is an intensity override function which locks the optic into a high brightness mode for 30 minutes.

/// TECH & FEATURES

- 20,000-Hour Power Reserve
- Aspherical Glass Lens with Zero Distortion
- Solar Charging Internal Battery
- Multi-Sensor Auto Brightness
- Brightness Intensity Override System
- Multiple Reticle System™ (MRS): 32 MOA Circle & 2 MOA Dot; 2 MOA Dot; 32 MOA Circle
- Direct Fit For Sig Sauer Optics-Ready P320 Handguns & DPP Footprint Applications

/// SPECS

- IPX8 Certified Waterproof
- Nitrogen Purged Enclosed Housing
- Travel Range ± 30 MOA
- 1.5 MOA Windage & Elevation Adjustment Per Click
- Window Size: 0.90 × 0.63 in
- 7075 T6 Aluminum Housing

SCS-320-GR



SCS-VP9



/// ABOUT THIS PRODUCT

The SCS-VP9-GR (Solar Charging Sight) is designed for the H&K VP9 optics ready handguns. It is designed to attach directly to the slide without an adapter plate and uses our solar charging system with multi-directional light sensors to automatically adjust brightness. The SCS can potentially operate indefinitely using an internal, rechargeable 20,000-hour battery meaning you will never need to change batteries again. Included is an intensity override function which locks the optic into a high brightness mode for 30 minutes.

/// TECH & FEATURES

- 20,000-Hour Power Reserve
- Solar Charging Internal Battery
- Multi-Sensor Auto Brightness
- Brightness Intensity Override System
- Multiple Reticle System™ (MRS): 32 MOA Circle & 2 MOA Dot; 2 MOA Dot; 32 MOA Circle
- Direct Fit For HK® VP9™ Optics-Ready Handguns

/// SPECS

- IP67 Certified Waterproof
- Travel Range ± 30 MOA
- 1 MOA Windage & Elevation Adjustment Per Click
- Window Size: 0.77 × 0.58 in
- 7075 T6 Aluminum Housing

SCS-VP9-GR



SCS-PDP



/// ABOUT THIS PRODUCT

The SCS-PDP-GR (Solar Charging Sight) is designed for Walther PDP 2.0 optics ready handguns. It is designed to attach directly to the slide without an adapter plate and uses our solar charging system with multi-directional light sensors to automatically adjust brightness. The SCS can potentially operate indefinitely using an internal, rechargeable 20,000-hour battery meaning you will never need to change batteries again. Included is an intensity override function which locks the optic into a high brightness mode for 30 minutes.

/// TECH & FEATURES

- 20,000-Hour Power Reserve
- Solar Charging Internal Battery
- Multi-Sensor Auto Brightness
- Brightness Intensity Override System
- Multiple Reticle System™ (MRS): 32 MOA Circle & 2 MOA Dot; 2 MOA Dot; 32 MOA Circle
- Direct Fit For Walther PDP 2.0 Optics-Ready Handguns

/// SPECS

- IP67 Certified Waterproof
- Travel Range ± 30 MOA
- 1 MOA Windage & Elevation Adjustment Per Click
- Window Size: 0.77 × 0.58 in
- 7075 T6 Aluminum Housing

SCS-PDP-GR



SCS-MP2



/// ABOUT THIS PRODUCT

The SCS-MP2-GR (Solar Charging Sight) is designed for the Smith & Wesson M&P-M2.0, 9mm & 40S&W handguns (will not fit 1.0 or Shield models). It is designed to attach directly to the slide without an adapter plate and uses our solar charging system with multi-directional light sensors to automatically adjust brightness. The SCS can potentially operate indefinitely using an internal, rechargeable 20,000-hour battery meaning you will never need to change batteries again. Included is an intensity override function which locks the optic into a high brightness mode for 30 minutes.

/// TECH & FEATURES

- 20,000-Hour Power Reserve
- Solar Charging Internal Battery
- Multi-Sensor Auto Brightness
- Brightness Intensity Override System
- Multiple Reticle System™ (MRS): 32 MOA Circle & 2 MOA Dot; 2 MOA Dot; 32 MOA Circle
- Direct Fit For Smith & Wesson M&P-M2.0™ Optics-Ready 9mm & 40S&W Handguns

/// SPECS

- IP67 Certified Waterproof
- Travel Range ± 30 MOA
- 1 MOA Windage & Elevation Adjustment Per Click
- Window Size: 0.77 × 0.58 in
- 7075 T6 Aluminum Housing

SCS-MP2-GR



SCS-MOS



/// ABOUT THIS PRODUCT

The SCS-MOS (Solar Charging Sight) is a direct attachment optic for full-size GLOCK™ MOS systems. It is designed to attach directly to the slide without an adapter plate and uses our solar charging system with multi-directional light sensors to automatically adjust brightness. The SCS can potentially operate indefinitely using an internal, rechargeable 20,000-hour battery meaning you will never need to change batteries again. Included is an intensity override function which locks the optic into a high brightness

/// TECH & FEATURES

- 20,000-Hour Power Reserve
- Solar Charging Internal Battery
- Multi-Sensor Auto Brightness
- Brightness Intensity Override System
- Multiple Reticle System™ (MRS): 32 MOA Circle & 2 MOA Dot; 2 MOA Dot; 32 MOA Circle
- Direct Fit For Full-Size GLOCK™ MOS Handguns

/// SPECS

- IP67 Certified Waterproof
- Travel Range ± 30 MOA
- 1 MOA Windage & Elevation Adjustment Per Click
- Window Size: 0.77 × 0.58 in
- Grade 5 Titanium Housing

SCS-M-GR



DIGITAL REFLEX SIGHTS

SOLAR CHARGING SIGHTS

ENCLOSED PISTOL SIGHTS

OPEN PISTOL SIGHTS

RIFLE SIGHTS

WEAPONLIGHTS

MAGNIFIERS

LASERS

ENCLOSED PISTOL SIGHTS





EPS



/// ABOUT THIS PRODUCT

The EPS is a full-sized, enclosed handgun sight featuring an aspheric lens for a perfectly clear sight picture. EPS has an ultra-low dot height for compatibility with most factory iron sights and utilizes Holosun's K footprint. EPS units include an RMR-to-K footprint adapter plate for maximum compatibility. EPS is available with a green or red LED in 2MOA, 6MOA, or MRS (Multi-Reticle System). All EPS models feature Shake Awake technology and MRS models include Solar Failsafe.

/// TECH & FEATURES

- Up to 50,000 Hour Battery Life
- Aspherical Glass Lens with Zero Distortion
- Shake Awake™ Technology with Last Setting Recall
- Solar Failsafe™ (MRS Models Only)
- Multiple Reticle System™ (MRS): 32 MOA Circle & 2 MOA Dot; 2 MOA Dot; 32 MOA Circle
- 2 MOA / 6 MOA Reticles

/// SPECS

- IPX8 Certified Waterproof
- Travel Range ± 30 MOA
- Reticle Brightness: 8 Daylight & 4 Night Vision Compatible Settings
- 1.5 MOA Windage & Elevation Adjustment Per Click
- Window Size: 0.90 × 0.63 in
- 7075 T6 Aluminum Housing
- Includes RMR-to-K Adapter Plate

EPS-RD-MRS



EPS-GR-MRS



EPS-RD-2



EPS-RD-6



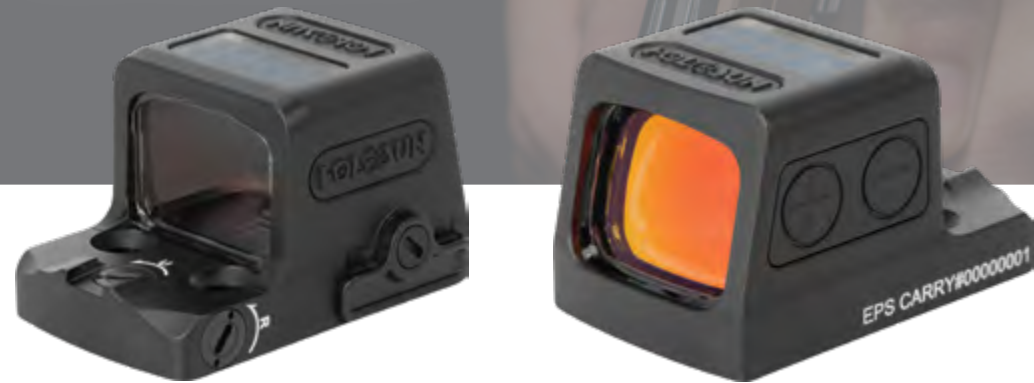
EPS-GR-2



EPS-GR-6



EPS CARRY



/// ABOUT THIS PRODUCT

The EPS Carry is an enclosed handgun sight designed for single or 1.5 stack handguns. EPS Carry features an aspheric lens for a perfectly clear sight picture and has an ultra-low dot height for compatibility with most factory iron sights. EPS Carry includes a built-in rear notch sight, utilizes Holosun's K footprint, and includes an RMSc-to-K footprint adapter plate for maximum compatibility. EPS Carry is available with a green or red LED in 2MOA, 6MOA, or MRS (Multi-Reticle System). All EPS models feature Shake Awake technology and MRS models include Solar Failsafe.

/// TECH & FEATURES

- Up to 50,000 Hour Battery Life
- Aspherical Glass Lens with Zero Distortion
- Shake Awake™ Technology with Last Setting Recall
- Solar Failsafe™ (MRS Models Only)
- Multiple Reticle System™ (MRS): 32 MOA Circle & 2 MOA Dot; 2 MOA Dot; 32 MOA Circle
- 2 MOA / 6 MOA Reticles

/// SPECS

- IPX8 Certified Waterproof
- Travel Range ± 30 MOA
- Reticle Brightness: 8 Daylight & 4 Night Vision Compatible Settings
- 1.5 MOA Windage & Elevation Adjustment Per Click
- Window Size: 0.77 × 0.58 in
- 7075 T6 Aluminum Housing
- Includes RMSc-to-K Adapter Plate

EPS-CARRY-RD-MRS



EPS-CARRY-GR-MRS



EPS-CARRY-RD-2



EPS-CARRY-RD-6



EPS-CARRY-GR-2



EPS-CARRY-GR-6



HE509T X2



/// ABOUT THIS PRODUCT

The HE509T series are hard-use, enclosed LED sights designed for handgun applications. The HE509T series feature a grade 5 titanium housing, Holosun's Super LED with up to 50k hour battery life, Solar Failsafe, and Shake Awake technology. The X2 version adds improved glass clarity, Lock Mode, and our Multi-Reticle System provide a 2MOA dot only, 32MOA Circle only, or a Circle and Dot. HE509T includes an adapter plate compatibility with RMR-style footprints.

/// TECH & FEATURES

- Up to 50,000 Hour Battery Life
- Nitrogen Purged Housing
- Shake Awake™ Technology with Last Setting Recall
- Solar Failsafe™
- Multiple Reticle System™ (MRS): 32 MOA Circle & 2 MOA Dot; 2 MOA Dot; 32 MOA Circle

/// SPECS

- IP67 Certified Waterproof
- Travel Range ± 30 MOA
- Reticle Brightness: 10 Daylight & 2 Night Vision Compatible Settings
- 1 MOA Windage & Elevation Adjustment Per Click
- Window Size: 0.66 × 0.90 in
- Grade 5 Titanium Housing

HE509T-RD X2



HE509T-GR X2



DIGITAL REFLEX SIGHTS

SOLAR CHARGING SIGHTS

ENCLOSED PISTOL SIGHTS

OPEN PISTOL SIGHTS

RIFLE SIGHTS

WEAPONLIGHTS

MAGNIFIERS

LASERS

OPEN PISTOL SIGHTS





507COMP



/// ABOUT THIS PRODUCT

The 507Comp handgun sight features a large 1.1" x 0.87" objective lens for enhanced shooting performance and Holosun's new Competition Reticle System (CRS) available with a red or green LED. CRS is an enhanced Multi-Reticle System with four components including a precision 2MOA dot, an 8MOA circle, 20MOA circle, and 32MOA circle with multiple combination settings to suit individual shooter's preference.

/// TECH & FEATURES

- Up to 50,000 Hour Battery Life
- Shake Awake™ Technology with Last Setting Recall
- Enlarged Window for Enhanced Field Of View
- Competition Reticle System (CRS): 2 MOA Dot with 8/20/32 MOA Circle
- Parallax Free & Unlimited Eye Relief

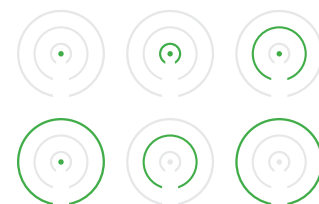
/// SPECS

- Travel Range ± 30 MOA
- Reticle Brightness: 6 Daylight & 2 Night Vision Compatible Settings
- 1 MOA Windage & Elevation Adjustment Per Click
- Window Size: 1.1 x 0.87 in
- 7075 T6 Aluminum Housing

507COMP



507COMP-GR



HE508T X2



/// ABOUT THIS PRODUCT

The HE508T series are open reflex sights designed for handgun applications. Features include a grade 5 titanium housing with industry standard footprint, Holosun's Super LED with up to 50k hour battery life, Multi-Reticle System providing 2MOA dot only, 32MOA Circle only, or Circle-Dot. HE508T also features Solar Failsafe, Shake Awake, and Lock Mode which, when activated, can prevent inadvertent setting changes.

/// TECH & FEATURES

- Up to 50,000 Hour Battery Life
- Shake Awake™ Technology with Last Setting Recall
- Solar Failsafe™
- Multiple Reticle System™ (MRS): 32 MOA Circle & 2 MOA Dot; 2 MOA Dot; 32 MOA Circle
- Parallax Free & Unlimited Eye Relief

/// SPECS

- Travel Range ± 50 MOA
- Reticle Brightness: 10 Daylight & 2 Night Vision Compatible Settings
- 1 MOA Windage & Elevation Adjustment Per Click
- Window Size: 0.63 × 0.91 in
- Grade 5 Titanium Housing

HE508T-RD X2



HE508T-GR X2



507C X2 407C X2



/// TECH & FEATURES

- Up to a 50,000 Hour Battery life
- Shake Awake Technology™ with Last Setting Recall
- Solar FailSafe™
- Multiple Reticle System™ (MRS): 32 MOA Circle & 2 MOA Dot; 2 MOA Dot; 32 MOA Circle (HE/HS507C)
- 2 MOA Reticle (HE/HS407C)
- Parallax Free & Unlimited Eye Relief

/// SPECS

- Travel Range ± 50 MOA
- Reticle Brightness: 10 Daylight & 2 Night Vision Compatible Settings
- 1 MOA Windage & Elevation Adjustment Per Click
- Window Size: 0.63 × 0.91 in
- 7075 T6 Aluminum Housing

HS507C X2



HE507C-GR X2



HS407C X2

HE407C-GR X2



507K X2 407K X2



/// TECH & FEATURES

- Up to a 50,000 Hour Battery life
- Shake Awake Technology™ with Last Setting Recall
- Multiple Reticle System™ (MRS): 32 MOA Circle & 2 MOA Dot; 2 MOA Dot; 32 MOA Circle (HE/HS507K)
- 6 MOA Reticle (HE/HS407K)
- Parallax Free & Unlimited Eye Relief

/// SPECS

- Travel Range ± 30 MOA
- Reticle Brightness: 10 Daylight & 2 Night Vision Compatible Settings
- 1 MOA Windage & Elevation Adjustment Per Click
- Window Size: 0.58 × 0.77 in
- 7075 T6 Aluminum Housing

HS507C X2



HE507C-GR X2



HS407C X2

HE407C-GR X2





DIGITAL REFLEX SIGHTS

SOLAR CHARGING SIGHTS

ENCLOSED PISTOL SIGHTS

OPEN PISTOL SIGHTS

RIFLE SIGHTS

WEAPONLIGHTS

MAGNIFIERS

LASERS

RIFLE SIGHTS



HOLOSUN

U

AEMS #AA023486

★ BCM

★

BCM

AEMS



/// TECH & FEATURES

- Up to a 50,000 Hour Battery Life
- Shake Awake Technology™ with Last Setting Recall
- Solar FailSafe™ (AEMS Model Only)
- Flip Down Protective Lens Covers (AEMS Model Only)
- Multiple Reticle System™ (MRS): 65 MOA Circle & 2 MOA Dot; 65 MOA Circle; 2 MOA Dot
- 2 MOA Dot Reticle Only (AEMS Core)

/// SPECS

- AEMS: IPX8 Certified Waterproof / AEMS Core: IP67 Certified Waterproof
- Travel Range ± 50 MOA
- Reticle Brightness: AEMS: 8 Daylight & 4 Night Vision Compatible Settings // AEMS Core: 10 Daylight & 4 Night Vision Compatible Settings
- ½ MOA Windage & Elevation Adjustment Per Click
- Window Size: 1.1 × 0.87 in
- AEMS: 7075 T6 Aluminum Housing / AEMS Core: Durable Aluminum Housing

/// ABOUT THIS PRODUCT

The Holosun Advanced Enclosed Micro Sight™ (AEMS) is 11% smaller than our traditional 20mm tube style optics, while still offering more than double the field of view. The AEMS offers the best combination of weight vs size vs field of view of any Holosun model.

AEMS RED



AEMS GREEN



AEMS CORE RED



AEMS CORE GREEN



HS510C

HE510C



HE530C

HE530G



/// TECH & FEATURES

- Up to a 50,000 Hour Battery life
- Shake Awake Technology™ with Last Setting Recall
- Solar FailSafe™
- Multiple Reticle System™ (MRS): 65 MOA Circle & 2 MOA Dot; 65 MOA Circle; 2 MOA Dot
- Parallax Free & Unlimited Eye Relief

*Available in FDE & 510C + HM3X Combo

/// SPECS

- IP67 Certified Waterproof
- Travel Range ± 50 MOA
- Reticle Brightness: 10 Daylight & 2 Night Vision Compatible Settings
- ½ MOA Windage & Elevation Adjustment Per Click
- Window Size: 0.91 × 1.26 in
- Aluminum Body with Titanium Hood

HS510C



HE510C-GR



/// TECH & FEATURES

- Up to a 50,000 Hour Battery life
- Shake Awake Technology™ with Last Setting Recall
- Solar FailSafe™ (HE530C Only)
- Multiple Reticle System™ (MRS): 65 MOA Circle & 2 MOA Dot; 2 MOA Dot
- Parallax Free & Unlimited Eye Relief

/// SPECS

- IPX8 Certified Waterproof
- Travel Range ± 50 MOA
- Reticle Brightness: 10 Daylight & 2 Night Vision Compatible Settings
- ½ MOA Windage & Elevation Adjustment Per Click
- Window Size: 30mm Diameter
- Grade 5 Titanium Housing

HE530G/C-RD



HE530G/C-GR



HE515CM



HE515GM



HE515GT



HE515CT



/// TECH & FEATURES

- Up to a 50,000 Hour Battery life
- Shake Awake Technology™ with Last Setting Recall
- Solar FailSafe™ (HE515CM / HS515CM Only)
- Multiple Reticle System™ (MRS): 65 MOA Circle & 2 MOA Dot; 2 MOA Dot
- Parallax Free & Unlimited Eye Relief

/// SPECS

- IPX8 Certified Waterproof
- Travel Range ± 50 MOA
- Reticle Brightness: 10 Daylight & 2 Night Vision Compatible Settings
- ½ MOA Windage & Elevation Adjustment Per Click
- Window Size: 20mm Diameter
- 7075 T6 Aluminum Housing

HS515GM/CM-RD



HE515GM/CM-GR



/// TECH & FEATURES

- Up to a 50,000 Hour Battery life
- Shake Awake Technology™ with Last Setting Recall
- Solar FailSafe™ (HE515CT Only)
- Multiple Reticle System™ (MRS): 65 MOA Circle & 2 MOA Dot; 2 MOA Dot
- Parallax Free & Unlimited Eye Relief

/// SPECS

- IPX8 Certified Waterproof
- Travel Range ± 50 MOA
- Reticle Brightness: 10 Daylight & 2 Night Vision Compatible Settings
- ½ MOA Windage & Elevation Adjustment Per Click
- Window Size: 20mm Diameter
- Grade 5 Titanium Housing

HE515GT/CT-RD



HE515GT/CT-GR



HE503R



HE503CU



HE403C



HE403R



HE403B



/// TECH & FEATURES

- Up to a 50,000 Hour Battery life
- Rotary Control For Fast Setting Changes (HE503R / HS503R Only)
- Solar FailSafe™ (HE503CU / HS503CU Only)
- Multiple Reticle System™ (MRS): 65 MOA Circle & 2 MOA Dot; 2 MOA Dot
- Parallax Free & Unlimited Eye Relief

/// SPECS

- IP67 Certified Waterproof
- Travel Range ± 50 MOA
- Reticle Brightness: 10 Daylight & 2 Night Vision Compatible Settings
- ½ MOA Windage & Elevation Adjustment Per Click
- Window Size: 20mm Diameter
- 6061 T6 Aluminum Housing

HS503R/CU



HE503CU-GR



HE503R-GD



/// TECH & FEATURES

- Up to a 50,000 Hour Battery life
- Rotary Control For Fast Setting Changes (HE403R / HS403R Only)
- Shake Awake Technology™ with Last Setting Recall
- Solar FailSafe™ (HE403C / HS403C Only)
- 2 MOA Dot Reticle
- Parallax Free & Unlimited Eye Relief

/// SPECS

- IP67 Certified Waterproof
- Travel Range ± 50 MOA
- Reticle Brightness: 10 Daylight & 2 Night Vision Compatible Settings
- ½ MOA Windage & Elevation Adjustment Per Click
- Window Size: 20mm Diameter
- 6061 T6 Aluminum Housing

HS403B/C/R



HE403R-GD



HE403B/C-GR





DIGITAL REFLEX SIGHTS

SOLAR CHARGING SIGHTS

ENCLOSED PISTOL SIGHTS

OPEN PISTOL SIGHTS

RIFLE SIGHTS

 WEAPONLIGHTS

MAGNIFIERS

LASERS

WEAPON LIGHTS



P.ID



/// ABOUT THIS PRODUCT

Holosun's Positive Identification Device™ (P.ID) offers illumination capability of up to 1000 lumens with 23,000 candela and uses a rechargeable power source. The P.ID is a powerful, yet compact lighting solutions that is compatible with most light-bearing duty holsters.



/// TECH & FEATURES

- Lumens (High Mode) - 1,000
- Candela (High Mode) - 23,000
- Runtime (High Mode) - 30 Min
- USB Magnetic Charging w/ Cable
- Fits Most x300 Duty Holsters

/// SPECS

- IPX8 Certified Waterproof
- Removable & Rechargeable 18350 Li-ion Battery
- Weight: 5 oz
- 7075 T6 Aluminum Housing
- Mode Output : High 1000lm / Low 500lm

P.ID



LED WHITE LIGHT

P.ID HC



/// ABOUT THIS PRODUCT

Holosun's Positive Identification Device™ High Candela (P.ID-HC) offers illumination capability of up to 800 lumens with 42,000 candela and uses a rechargeable power source. The P.ID-HC is a powerful, yet compact lighting solutions that is compatible with most light-bearing duty holsters.



/// TECH & FEATURES

- Lumens (High Mode) - 800
- Candela (High Mode) - 42,000
- Runtime (High Mode) - 30 Min
- USB Magnetic Charging w/ Cable
- Fits Most x300 Duty Holsters

/// SPECS

- IPX8 Certified Waterproof
- Removable & Rechargeable 18350 Li-ion Battery
- Weight: 5 oz
- 7075 T6 Aluminum Housing
- Mode Output : High 800lm / Low 400lm

P.ID HC



LED WHITE LIGHT

P.ID PLUS



/// ABOUT THIS PRODUCT

P.ID Plus is a high-power white light with visible green laser which can fire independently using WL or VIS activation buttons or simultaneously via Plus Mode which enables the user to fire both white light and green laser by pressing any activation button.

/// ABOUT THIS PRODUCT

P.ID Dual is a high-power white light with visible green laser and an infrared laser. P.ID Dual includes Plus Mode, adds IR Mode (IR function only), and Dual Mode which enables the user to fire white light and VIS green laser, or IR laser using different activation buttons providing active aiming on multiple spectrums should the need arise.

P.ID DUAL



/// TECH & FEATURES

- Lumens (High Mode) - 900
- Candela (High Mode) - 20,000
- Runtime (High Mode) - 30 Min
- Integrated Green Laser
- USB Magnetic Charging w/ Cable

/// SPECS

- IPX8 Certified Waterproof
- Removable & Rechargeable 18350 Li-ion Battery
- Weight: 5.1 oz
- 7075 T6 Aluminum Housing
- Mode Output : High 900lm / Low 450lm

P.ID-PLUS



/// TECH & FEATURES

- Lumens (High Mode) - 800
- Candela (High Mode) - 17,000
- Runtime (High Mode) - 30 Min
- Integrated Green Laser & IR Laser
- USB Magnetic Charging w/ Cable

/// SPECS

- IPX8 Certified Waterproof
- Removable & Rechargeable 18350 Li-ion Battery
- Weight: 5.1 oz
- 7075 T6 Aluminum Housing
- Mode Output : High 800lm / Low 400lm

P.ID-DUAL



MAGNIFIERS



MR 556 A1
5.56 mm x 45



HM3X



/// TECH & FEATURES

- Flip-to-the-side Design
- Compatible with Absolute & Lower 1/3 Height Optics
- QD Mount & Spacer Included

/// SPECS

- IP67 Certified Waterproof
- 3X Magnification
- 7° FOV (approx. 37ft / 100yds)
- Eye Relief: 70mm / 2.75 in
- Exit Pupil: 7.6mm / 0.29 in
- Durable Aluminum Housing

HM3XT



/// TECH & FEATURES

- Ultra Compact, Flip-to-the-side Design
- Compatible with Absolute & Lower 1/3 Height Optics
- QD Mount & Spacer Included

/// SPECS

- IP67 Certified Waterproof
- 3X Magnification
- 7° FOV (approx. 37ft / 100yds)
- Eye Relief: 70mm / 2.75 in
- Exit Pupil: 7.6mm / 0.29 in
- Grade 5 Titanium Housing

LASERS

DIGITAL REFLEX SIGHTS

SOLAR CHARGING SIGHTS

ENCLOSED PISTOL SIGHTS

OPEN PISTOL SIGHTS

RIFLE SIGHTS

WEAPONLIGHTS

MAGNIFIERS





LE117



LS117



LE221



LS221



/// TECH & FEATURES

- Visible or IR Laser Designator
- High / Low Mode Selector (LE117 Only)
- Quick Detach Mount

/// SPECS

- CR123A Battery
- IP67 Certified Waterproof (LS117 Only)
- IPX8 Certified Waterproof (LE117 Only)
- AA / CR2 Battery (LS117G Only)
- 7075 T6 Aluminum Housing (LS117 Only)
- Grade 5 Titanium Housing (LE117 Only)

LS117-G



LS117-R



LS117-IR



LE117-GR



LE117-R



LE117-IR



/// TECH & FEATURES

- Visible or IR Laser Designator
- Coaxial Laser Mechanism
- Mode / Intensity Selector Switch
- Quick Detach Mount

/// SPECS

- CR123A Battery
- IP67 Certified Waterproof (LS221 Only)
- IPX8 Certified Waterproof (LE221 Only)
- 7075 T6 Aluminum Housing (LS221 Only)
- Grade 5 Titanium Housing (LE221 Only)

LS221R



OR

LS221G



LE221-GR&IR



OR

LE221-RD&IR



LE321

LS321



/// TECH & FEATURES

- Visible & IR Laser Designator
- Adjustable Focus IR Illuminator
- Optional White Light (LE321 Only)
- Coaxial Laser Mechanism
- Mode / Intensity Selector Switch
- Quick Detach Mount

/// SPECS

- CR123A Battery
- IP67 Certified Waterproof (LS321 Only)
- IPX8 Certified Waterproof (LE321 Only)
- 7075 T6 Aluminum Housing (LS321 Only)
- Grade 5 Titanium Housing (LE321 Only)

LS321G



OR



LS321R



IR ILLUMINATOR

LE321-GR



OR



LE321-RD



IR ILLUMINATOR

+



LED WHITE LIGHT



LE420

LS420



RML/RMLt



/// TECH & FEATURES

- Visible & IR Laser Designator
- Visible & IR Illuminator
- Coaxial Laser Mechanism
- Mode / Intensity Selector Switch
- Quick Detach Mount

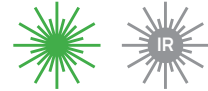
/// SPECS

- Two CR123A Batteries
- Two CR123A / 18650 Rechargeable Battery (LE420 Only)
- IP67 Certified Waterproof (LS420 Only)
- IPX8 Certified Waterproof (LE420 Only)
- 7075 T6 Aluminum Housing (LS420 Only)
- Grade 5 Titanium Housing (LE420 Only)

LE420-GR



LS420G



/// TECH & FEATURES

- Green, Red or IR Laser Designators
- Universal Rail Mount
- Tactile Windage & Elevation Adjustments
- Compatible with most Weapon Light holsters

/// SPECS

- 1/3N Battery
- IPX8 Certified Waterproof
- Durable Polymer Housing (RML Only)
- Grade 5 Titanium Housing (RMLt Only)

RML-GR



RML-RD



RML-IR



RMLt-GR



RMLt-RD



RMLt-IR



	HE509T-RD X2	HE509T-GR X2	EPS-CARRY-GR-6	EPS-CARRY-RD-6	EPS-CARRY-GR-2	EPS-CARRY-RD-2	EPS-CARRY-GR-MRS
FUNCTIONS							
Selectable Reticle	•	•	○	○	○	○	•
Solar Power	•	•	○	○	○	○	•
Shake Awake Technology	•	•	•	•	•	•	•
Memory	•	•	•	•	•	•	•
OPTICAL DATA							
Light Source	LED	LED	LED	LED	LED	LED	LED
Wavelength	650nm	540nm	540nm	650nm	540nm	650nm	540nm
Reticle	2 MOA Dot & 65MOA Circle	2 MOA Dot & 65MOA Circle	6 MOA Dot	6 MOA Dot	2 MOA Dot	2 MOA Dot	2 MOA Dot & 32MOA Circle
No Parallax	•	•	•	•	•	•	•
Unlimited Eye Relief	•	•	•	•	•	•	•
Magnification	1x	1x	1x	1x	1x	1x	1x
Multi-Coatings	•	•	•	•	•	•	•
ELECTRONIC DATA							
Battery	CR1632	CR1632	CR1620	CR1620	CR1620	CR1620	CR1620
Battery Life (Setting 6)	50,000 Hour (Dot)	50,000 Hour (Dot)	50,000 Hour	50,000 Hour	50,000 Hour	50,000 Hour	50,000 Hour
Brightness Setting	10 DLT & 2NV Compatible	10 DLT & 2NV Compatible	8 DLT & 4NV Compatible	8 DLT & 4NV Compatible	8 DLT & 4NV Compatible	8 DLT & 4NV Compatible	8 DLT & 4NV Compatible
MECHANICAL DATA							
Housing Material	Titanium	Titanium	7075 T6 Aluminum	7075 T6 Aluminum	7075 T6 Aluminum	7075 T6 Aluminum	7075 T6 Aluminum
Surface Finish	Titanium Finish	Titanium Finish	Anodized	Anodized	Anodized	Anodized	Anodized
Housing Color	Black	Black	Black	Black	Black	Black	Black
Adjustment per Click	1 MOA	1 MOA	1.5 MOA	1.5 MOA	1.5 MOA	1.5 MOA	1.5 MOA
W&E Travel Range	±30 MOA	±30 MOA	±30 MOA	±30 MOA	±30 MOA	±30 MOA	±30 MOA
Storage Temperature	-40°C~70°C	-40°C~70°C	-40°C~70°C	-40°C~70°C	-40°C~70°C	-40°C~70°C	-40°C~70°C
Working Temperature	-30°C~60°C	-30°C~60°C	-30°C~60°C	-30°C~60°C	-30°C~60°C	-30°C~60°C	-30°C~60°C
Submersion	IP67	IP67	IPX8	IPX8	IPX8	IPX8	IPX8
Vibration	5000G	5000G	5000G	5000G	5000G	5000G	5000G
PHYSICAL DATA							
Window Size (in)	0.66×0.9	0.66×0.9	0.77×0.58	0.77×0.58	0.77×0.58	0.77×0.58	0.77×0.58
Housing Dimension (in)	1.6×1.16×1.13	1.6×1.16×1.13	1.62×1.07×0.95	1.62×1.07×0.95	1.62×1.07×0.95	1.62×1.07×0.95	1.62×1.07×0.95
Housing Weight (oz)	1.72	1.72	1.23	1.23	1.23	1.23	1.23

	EPS-CARRY-RD-MRS	EPS-GR-6	EPS-RD-6	EPS-GR-2	EPS-RD-2	EPS-GR-MRS	EPS-RD-MRS
FUNCTIONS							
Selectable Reticle	•	○	○	○	○	•	•
Solar Power	•	○	○	○	○	•	•
Shake Awake Technology	•	•	•	•	•	•	•
Memory	•	•	•	•	•	•	•
OPTICAL DATA							
Light Source	LED	LED	LED	LED	LED	LED	LED
Wavelength	650nm	540nm	650nm	540nm	650nm	540nm	650nm
Reticle	2 MOA Dot & 32MOA Circle	6 MOA Dot	6 MOA Dot	2 MOA Dot	2 MOA Dot	2 MOA Dot & 32MOA Circle	2 MOA Dot & 32MOA Circle
No Parallax	•	•	•	•	•	•	•
Unlimited Eye Relief	•	•	•	•	•	•	•
Magnification	1x	1x	1x	1x	1x	1x	1x
Multi-Coatings	•	•	•	•	•	•	•
ELECTRONIC DATA							
Battery	CR1620	CR1620	CR1620	CR1620	CR1620	CR1620	CR1620
Battery Life (Setting 6)	50,000 Hour	50,000 Hour	50,000 Hour	50,000 Hour	50,000 Hour	50,000 Hour	50,000 Hour
Brightness Setting	8 DLT & 4NV Compatible	8 DLT & 4NV Compatible	8 DLT & 4NV Compatible	8 DLT & 4NV Compatible	8 DLT & 4NV Compatible	8 DLT & 4NV Compatible	8 DLT & 4NV Compatible
MECHANICAL DATA							
Housing Material	7075 T6 Aluminum	7075 T6 Aluminum	7075 T6 Aluminum	7075 T6 Aluminum	7075 T6 Aluminum	7075 T6 Aluminum	7075 T6 Aluminum
Surface Finish	Anodized	Anodized	Anodized	Anodized	Anodized	Anodized	Anodized
Housing Color	Black	Black	Black	Black	Black	Black	Black
Adjustment per Click	1.5 MOA	1.5 MOA	1.5 MOA	1.5 MOA	1.5 MOA	1.5 MOA	1.5 MOA
W&E Travel Range	±30 MOA	±30 MOA	±30 MOA	±30 MOA	±30 MOA	±30 MOA	±30 MOA
Storage Temperature	-40°C~70°C	-40°C~70°C	-40°C~70°C	-40°C~70°C	-40°C~70°C	-40°C~70°C	-40°C~70°C
Working Temperature	-30°C~60°C	-30°C~60°C	-30°C~60°C	-30°C~60°C	-30°C~60°C	-30°C~60°C	-30°C~60°C
Submersion	IPX8	IPX8	IPX8	IPX8	IPX8	IPX8	IPX8
Vibration	5000G	5000G	5000G	5000G	5000G	5000G	5000G
PHYSICAL DATA							
Window Size (in)	0.77×0.58	0.90×0.63	0.90×0.63	0.90×0.63	0.90×0.63	0.90×0.63	0.90×0.63
Housing Dimension (in)	1.62×1.07×0.95	1.62×1.19×0.99	1.62×1.19×0.99	1.62×1.19×0.99	1.62×1.19×0.99	1.62×1.19×0.99	1.62×1.19×0.99
Housing Weight (oz)	1.23	1.4	1.4	1.4	1.4	1.4	1.4

• INCLUDED ○ NOT INCLUDED

	HE507COMP-GR	HS507COMP	HS407C X2	HE407C-GR X2	HE407K-GR X2	HS407K X2
FUNCTIONS						
Selectable Reticle	•	•	○	○	○	○
Solar Power	○	○	•	•	○	○
Shake Awake Technology	•	•	•	•	•	•
Memory	•	•	•	•	•	•
OPTICAL DATA						
Light Source	LED	LED	LED	LED	LED	LED
Wavelength	540nm	650nm	540nm	540nm	650nm	540nm
Reticle	2 MOA Dot & 8/20/32 MOA Circle	2 MOA Dot & 8/20/32 MOA Circle	2 MOA Dot	2 MOA Dot	6 MOA Dot	6 MOA Dot
No Parallax	•	•	•	•	•	•
Unlimited Eye Relief	•	•	•	•	•	•
Magnification	1×	1×	1×	1×	1×	1×
Multi-Coatings	•	•	•	•	•	•
ELECTRONIC DATA						
Battery	CR1632	CR1632	CR1632	CR1632	CR1632	CR1632
Battery Life (Setting 6)	50,000 Hour	50,000 Hour	50,000 Hour	50,000 Hour	50,000 Hour	50,000 Hour
Brightness Setting	6 DLt & 2NV Compatible	6 DLt & 2NV Compatible	10 DLt & 2NV Compatible	10 DLt & 2NV Compatible	10 DLt & 2NV Compatible	10 DLt & 2NV Compatible
MECHANICAL DATA						
Housing Material	7075 T6 Aluminum	7075 T6 Aluminum	7075 T6 Aluminum	7075 T6 Aluminum	7075 T6 Aluminum	7075 T6 Aluminum
Surface Finish	Anodized	Anodized	Anodized	Anodized	Anodized	Anodized
Housing Color	Black	Black	Black	Black	Black	Black
Adjustment per Click	1 MOA	1 MOA	1 MOA	1 MOA	1 MOA	1 MOA
W&E Travel Range	±30 MOA	±30 MOA	±50 MOA	±50 MOA	±30 MOA	±30 MOA
Storage Temperature	-40°C~70°C	-40°C~70°C	-40°C~70°C	-40°C~70°C	-40°C~70°C	-40°C~70°C
Working Temperature	-30°C~60°C	-30°C~60°C	-30°C~60°C	-30°C~60°C	-30°C~60°C	-30°C~60°C
Submersion	IP67	IP67	IP67	IP67	IP67	IP67
Vibration	5000G	5000G	5000G	5000G	5000G	5000G
PHYSICAL DATA						
Window Size (in)	1.1×0.87	1.1×0.87	0.63×0.91	0.63×0.91	0.58×0.77	0.58×0.77
Housing Dimension (in)	1.8×1.3×1.3	1.8×1.3×1.3	1.78×1.15×1.15	1.78×1.15×1.15	1.6×0.98×0.95	1.6×0.98×0.95
Housing Weight (oz)	1.7	1.7	1.5	1.5	1	1

	HS507C X2	HE507C-GR X2	HS507K X2	HE507K-GR X2	HE508T-GR X2	HE508T-RD X2
FUNCTIONS						
Selectable Reticle	•	•	•	•	•	•
Solar Power	•	•	○	○	•	•
Shake Awake Technology	•	•	•	•	•	•
Memory	•	•	•	•	•	•
OPTICAL DATA						
Light Source	LED	LED	LED	LED	LED	LED
Wavelength	540nm	540nm	540nm	650nm	540nm	650nm
Reticle	2 MOA Dot & 32MOA Circle	2 MOA Dot & 32MOA Circle	2 MOA Dot & 32MOA Circle	2 MOA Dot & 32MOA Circle	2 MOA Dot & 32MOA Circle	2 MOA Dot & 32MOA Circle
No Parallax	•	•	•	•	•	•
Unlimited Eye Relief	•	•	•	•	•	•
Magnification	1×	1×	1×	1×	1×	1×
Multi-Coatings	•	•	•	•	•	•
ELECTRONIC DATA						
Battery	CR1632	CR1632	CR1632	CR1632	CR1632	CR1632
Battery Life (Setting 6)	50,000 Hour (Dot)	50,000 Hour (Dot)	50,000 Hour (Dot)	50,000 Hour (Dot)	50,000 Hour (Dot)	50,000 Hour (Dot)
Brightness Setting	10 DLt & 2NV Compatible	10 DLt & 2NV Compatible	10 DLt & 2NV Compatible	10 DLt & 2NV Compatible	10 DLt & 2NV Compatible	10 DLt & 2NV Compatible
MECHANICAL DATA						
Housing Material	7075 T6 Aluminum	7075 T6 Aluminum	7075 T6 Aluminum	7075 T6 Aluminum	Titanium	Titanium
Surface Finish	Anodized	Anodized	Anodized	Anodized	Titanium Finish	Titanium Finish
Housing Color	Black	Black	Black	Black	Black	Black
Adjustment per Click	1 MOA	1 MOA	1 MOA	1 MOA	1 MOA	1 MOA
W&E Travel Range	±50 MOA	±50 MOA	±30 MOA	±30 MOA	±50 MOA	±50 MOA
Storage Temperature	-40°C~70°C	-40°C~70°C	-40°C~70°C	-40°C~70°C	-40°C~70°C	-40°C~70°C
Working Temperature	-30°C~60°C	-30°C~60°C	-30°C~60°C	-30°C~60°C	-30°C~60°C	-30°C~60°C
Submersion	IP67	IP67	IP67	IP67	IP67	IP67
Vibration	5000G	5000G	5000G	5000G	5000G	5000G
PHYSICAL DATA						
Window Size (in)	0.63×0.91	0.63×0.91	0.58×0.77	0.58×0.77	0.63×0.91	0.63×0.91
Housing Dimension (in)	1.78×1.15×1.15	1.78×1.15×1.15	1.6×0.98×0.95	1.6×0.98×0.95	1.78×1.15×1.15	1.78×1.15×1.15
Housing Weight (oz)	1.5	1.5	1	1	2	2

• INCLUDED ○ NOT INCLUDED

	SCRS-GR-2	SCRS-RD-2	SCRS-GR-MRS	SCRS-RD-MRS	SCS MP2-GR
FUNCTIONS					
Selectable Reticle	○	○	●	●	●
Solar Power	●	●	●	●	●
Shake Awake Technology	●	●	●	●	○
Memory	●	●	●	●	○
OPTICAL DATA					
Light Source	LED	LED	LED	LED	LED
Wavelength	540nm	650nm	540nm	650nm	540nm
Reticle	2 MOA Dot	2 MOA Dot	2 MOA Dot & 65MOA Circle	2 MOA Dot & 65MOA Circle	2 MOA Dot & 32MOA Circle
No Parallax	●	●	●	●	●
Unlimited Eye Relief	●	●	●	●	●
Magnification	1×	1×	1×	1×	1×
Multi-Coatings	●	●	●	●	●
ELECTRONIC DATA					
Battery	Internal Rechargeable Battery	Internal Rechargeable Battery	Internal Rechargeable Battery	Internal Rechargeable Battery	Internal Rechargeable Battery
Battery Life (Setting 6)	20,000 Hour	20,000 Hour	20,000 Hour	20,000 Hour	20,000 Hour
Brightness Setting	8 DLt & 4NV Compatible	8 DLt & 4NV Compatible	8 DLt & 4NV Compatible	8 DLt & 4NV Compatible	Auto
MECHANICAL DATA					
Housing Material	7075 T6 Aluminum	7075 T6 Aluminum	7075 T6 Aluminum	7075 T6 Aluminum	7075 T6 Aluminum
Surface Finish	Anodized	Anodized	Anodized	Anodized	Anodized
Housing Color	Black	Black	Black	Black	Black
Adjustment per Click	1 MOA	1 MOA	1 MOA	1 MOA	1 MOA
W&E Travel Range	±50 MOA	±50 MOA	±50 MOA	±50 MOA	±30 MOA
Storage Temperature	-40°C~70°C	-40°C~70°C	-40°C~70°C	-40°C~70°C	-40°C~70°C
Working Temperature	-30°C~60°C	-30°C~60°C	-30°C~60°C	-30°C~60°C	-30°C~60°C
Submersion	IP67	IP67	IP67	IP67	IP67
Vibration	1000G	1000G	1000G	1000G	5000G
PHYSICAL DATA					
Window Size (in)	22 mm	22 mm	22 mm	22 mm	0.77×0.58
Housing Dimension (in)	1.7×1.35×1.6	1.7×1.35×1.6	1.7×1.35×1.6	1.7×1.35×1.6	2×1.05×0.95
Housing Weight (oz)	2.45	2.45	2.45	2.45	1.35

	SCS VP9-GR	SCS PDP-GR	SCS 320-GR	SCS MOS-GR
FUNCTIONS				
Selectable Reticle	●	●	●	●
Solar Power	●	●	●	●
Shake Awake Technology	○	○	○	○
Memory	○	○	○	○
OPTICAL DATA				
Light Source	LED	LED	LED	LED
Wavelength	540nm	540nm	540nm	540nm
Reticle	2 MOA Dot & 32MOA Circle	2 MOA Dot & 32MOA Circle	2 MOA Dot & 32MOA Circle	2 MOA Dot & 32MOA Circle
No Parallax	●	●	●	●
Unlimited Eye Relief	●	●	●	●
Magnification	1×	1×	1×	1×
Multi-Coatings	●	●	●	●
ELECTRONIC DATA				
Battery	Internal Rechargeable Battery	Internal Rechargeable Battery	Internal Rechargeable Battery	Internal Rechargeable Battery
Battery Life (Setting 6)	20,000 Hour	20,000 Hour	20,000 Hour	20,000 Hour
Brightness Setting	Auto	Auto	Auto	Auto
MECHANICAL DATA				
Housing Material	7075 T6 Aluminum	7075 T6 Aluminum	7075 T6 Aluminum	Titanium
Surface Finish	Anodized	Anodized	Anodized	Titanium Finish
Housing Color	Black	Black	Black	Black
Adjustment per Click	1 MOA	1 MOA	1.5 MOA	1 MOA
W&E Travel Range	±30 MOA	±30 MOA	±30 MOA	±30 MOA
Storage Temperature	-40°C~70°C	-40°C~70°C	-40°C~70°C	-40°C~70°C
Working Temperature	-30°C~60°C	-30°C~60°C	-30°C~60°C	-30°C~60°C
Submersion	IP67	IP67	IPX8	IP67
Vibration	5000G	5000G	5000G	5000G
PHYSICAL DATA				
Window Size (in)	0.77×0.58	0.77×0.58	0.90×0.63	0.77×0.58
Housing Dimension (in)	2×1.05×0.95	2×1.05×0.95	1.85×1.15×1.06	1.93×1.03×0.91
Housing Weight (oz)	1.35	1.35	1.35	1.3

● INCLUDED ○ NOT INCLUDED

	HS510C	HE510C-GR	AEMS	AEMS-GR	AEMS CORE
FUNCTIONS					
Selectable Reticle	•	•	•	•	○
Solar Power	•	•	•	•	○
Shake Awake Technology	•	•	•	•	•
Memory	•	•	•	•	•
OPTICAL DATA					
Light Source	LED	LED	LED	LED	LED
Wavelength	650nm	540nm	650nm	540nm	650nm
Reticle	2 MOA Dot & 65MOA Circle	2 MOA Dot & 65MOA Circle	2 MOA Dot & 65MOA Circle	2 MOA Dot & 65MOA Circle	2 MOA Dot
No Parallax	•	•	•	•	•
Unlimited Eye Relief	•	•	•	•	•
Magnification	1x	1x	1x	1x	1x
Multi-Coatings	•	•	•	•	•
Laser	○	○	○	○	○
ELECTRONIC DATA					
Battery	CR2032	CR2032	CR2032	CR2032	CR2032
Battery Life (Setting 6)	50,000 Hour	50,000 Hour	50,000 Hour	50,000 Hour	50,000 Hour
Brightness Setting	10 DLt & 2NV Compatible	10 DLt & 2NV Compatible	8 DLt & 4NV Compatible	8 DLt & 4NV Compatible	10 DLt & 2NV Compatible
MECHANICAL DATA					
Housing Material	Aluminum & Titanium Hood	Aluminum & Titanium Hood	7075 T6 Aluminum	7075 T6 Aluminum	Aluminum
Surface Finish	MAO	MAO	Anodized	Anodized	MAO
Housing Color	Black	Black	Black	Black	Black
Adjustment Per Click	0.5 MOA	0.5 MOA	0.5 MOA	0.5 MOA	0.5 MOA
W&E Travel Range	±50 MOA	±50 MOA	±50 MOA	±50 MOA	±50 MOA
Storage Temperature	-40°C~70°C	-40°C~70°C	-40°C~70°C	-40°C~70°C	-40°C~70°C
Working Temperature	-30°C~60°C	-30°C~60°C	-30°C~60°C	-30°C~60°C	-30°C~60°C
Submersion	IP67	IP67	IPX8	IPX8	IP67
Vibration	1000G	1000G	1000G	1000G	1000G
PHYSICAL DATA					
Window Size (in)	0.91×1.26	0.91×1.26	1.1×0.87	1.1×0.87	1.1×0.87
Housing Dimension (in)	3.3×1.68×1.78	3.3×1.68×1.78	2.2×1.54×1.7	2.2×1.54×1.7	2.2×1.54×1.7
Housing Weight (oz)	4.94	4.94	4.3	4.3	4
Central Height Mount (in)	1.41	1.41	1.63	1.63	1.63

	AEMS CORE-GR	HS403B/C	HS403R	HE403B/C-GR	HE403/503R-GD
FUNCTIONS					
Selectable Reticle	○	○	○	○	HE503R-GD
Solar Power	○	HS403C	○	HE403C-GR	○
Shake Awake Technology	•	•	○	•	○
Memory	•	•	○	•	○
OPTICAL DATA					
Light Source	LED	LED	LED	LED	LED
Wavelength	540nm	650nm	650nm	540nm	590nm
Reticle	2 MOA Dot	2 MOA Dot	2 MOA Dot	2 MOA Dot	2 MOA Dot/Circle Dot
No Parallax	•	•	•	•	•
Unlimited Eye Relief	•	•	•	•	•
Magnification	1x	1x	1x	1x	1x
Multi-Coatings	•	•	•	•	•
Laser	○	○	○	○	○
ELECTRONIC DATA					
Battery	CR2032	CR2032	CR2032	CR2032	CR2032
Battery Life (Setting 6)	50,000 Hour	50,000 Hour	100,000 Hour	50,000 Hour	50,000 Hour
Brightness Setting	10 DLt & 2NV Compatible	10 DLt & 2NV Compatible	10 DLt & 2NV Compatible	10 DL & 2NV Compatible	10 DL & 2NV Compatible
MECHANICAL DATA					
Housing Material	Aluminum	6061 T6 Aluminum	Aluminum	6061 T6 Aluminum	Aluminum
Surface Finish	MAO	MAO	MAO	MAO	MAO
Housing Color	Black	Black	Black	Black	Black
Adjustment Per Click	0.5 MOA	0.5 MOA	0.5 MOA	0.5 MOA	0.5 MOA
W&E Travel Range	±50 MOA	±50 MOA	±50 MOA	±50 MOA	±50 MOA
Storage Temperature	-40°C~70°C	-40°C~70°C	-40°C~70°C	-40°C~70°C	-40°C~70°C
Working Temperature	-30°C~60°C	-30°C~60°C	-30°C~60°C	-30°C~60°C	-30°C~60°C
Submersion	IP67	IP67	IP67	1 meter 30 min	1 meter 30 min
Vibration	1000G	1000G	1000G	1000G	1000G
PHYSICAL DATA					
Window Size (in)	1.1×0.87	20mm Diameter	20mm Diameter	20mm Diameter	20mm Diameter
Housing Dimension (in)	2.2×1.54×1.7	2.45×1.43×1.6	2.75×1.43×1.62	2.45×1.43×1.6	2.75×1.43×1.62
Housing Weight (oz)	4	2.82	3.53	2.82	3.53
Central Height Mount (in)	1.63	1.63	1.63	1.63	1.63

• INCLUDED ○ NOT INCLUDED

	HS503CU	HE503CU-GR	HS503R	HS515CM	HE515CM-GR
FUNCTIONS					
Selectable Reticle	•	•	•	•	•
Solar Power	•	•	◦	•	•
Shake Awake Technology	•	•	◦	•	•
Memory	•	•	◦	•	•
OPTICAL DATA					
Light Source	LED	LED	LED	LED	LED
Wavelength	650nm	540nm	650nm	650nm	540nm
Reticle	2 MOA Dot & 65MOA Circle	2 MOA Dot & 65MOA Circle	2 MOA Dot & 65MOA Circle	2 MOA Dot & 65MOA Circle	2 MOA Dot & 65MOA Circle
No Parallax	•	•	•	•	•
Unlimited Eye Relief	•	•	•	•	•
Magnification	1×	1×	1×	1×	1×
Multi-Coatings	•	•	•	•	•
Laser	◦	◦	◦	◦	◦
ELECTRONIC DATA					
Battery	CR2032	CR2032	CR2032	CR2032	CR2032
Battery Life (Setting 6)	50,000 Hour	50,000 Hour	100,000 Hour (Dot) 15,000 (Circle Dot)	50,000 Hour	50,000 Hour
Brightness Setting	10 DLt & 2NV Compatible	10 DL & 2NV Compatible	10 DLt & 2NV Compatible	10 DLt & 2NV Compatible	10 DL & 2NV Compatible
MECHANICAL DATA					
Housing Material	6061 T6 Aluminum	6061 T6 Aluminum	6061 T6 Aluminum	7075 T6 Aluminum	7075 T6 Aluminum
Surface Finish	MAO	MAO	Anodized	Hard Anodized	Anodize
Housing Color	Black	Black	Black	Black	Black
Adjustment Per Click	0.5 MOA	0.5 MOA	0.5 MOA	0.5 MOA	0.5 MOA
W&E Travel Range	±50 MOA	±50 MOA	±50 MOA	±50 MOA	±50 MOA
Storage Temperature	-40°C~70°C	-40°C~70°C	-40°C~70°C	-40°C~70°C	-40°C~70°C
Working Temperature	-30°C~60°C	-30°C~60°C	-30°C~60°C	-40°C~60°C	-40°C~60°C
Submersion	IP67	1 meter 30 min	IP67	IPX8	20 meter 30 min
Vibration	1000G	1000G	1000G	1000G	1000G
PHYSICAL DATA					
Window Size (in)	20mm Diameter	20mm Diameter	20mm Diameter	20mm Diameter	20mm Diameter
Housing Dimension (in)	2.6×1.43×1.6	2.6×1.43×1.6	2.73×1.53×1.61	2.75×1.43×1.62	2.75×1.43×1.62
Housing Weight (oz)	3	3	3.74	3.53	3.53
Central Height Mount (in)	1.63	1.63	1.63	1.63	1.63

	HS515GM	HE515GM-GR	HE515CT	HE515GT	HE530C	HE530G
FUNCTIONS						
Selectable Reticle	•	•	•	•	•	•
Solar Power	◦	◦	•	◦	•	◦
Shake Awake Technology	•	•	•	•	•	•
Memory	•	•	•	•	•	•
OPTICAL DATA						
Light Source	LED	LED	LED	LED	LED	LED
Wavelength	650nm	540nm	540nm/650nm	540nm/650nm	540nm/650nm	540nm/650nm
Reticle	2 MOA Dot & 65MOA Circle	2 MOA Dot & 65MOA Circle	2 MOA Dot & 65MOA Circle	2 MOA Dot & 65MOA Circle	2 MOA Dot & 65MOA Circle	2 MOA Dot & 65MOA Circle
No Parallax	•	•	•	•	•	•
Unlimited Eye Relief	•	•	•	•	•	•
Magnification	1×	1×	1×	1×	1×	1×
Multi-Coatings	•	•	•	•	•	•
Laser	◦	◦	◦	◦	◦	◦
ELECTRONIC DATA						
Battery	CR2032	CR2032	CR2032	CR2032	CR2032	CR2032
Battery Life (Setting 6)	50,000 Hour	50,000 Hour	50,000 Hour	50,000 Hour	50,000 Hour	50,000 Hour
Brightness Setting	10 DLt & 2NV Compatible	10 DL & 2NV Compatible	10 DL & 2NV Compatible	10 DL & 2NV Compatible	10 DL & 2NV Compatible	10 DL & 2NV Compatible
MECHANICAL DATA						
Housing Material	7075 T6 Aluminum	7075 T6 Aluminum	Titanium	Titanium	Titanium	Titanium
Surface Finish	Hard Anodized	Anodize	Titanium Finish	Titanium Finish	Titanium Finish	Titanium Finish
Housing Color	Black	Black	Black	Black	Black	Black
Adjustment Per Click	0.5 MOA	0.5 MOA	0.5 MOA	0.5 MOA	0.5 MOA	0.5 MOA
W&E Travel Range	±50 MOA	±50 MOA	±50 MOA	±50 MOA	±50 MOA	±50 MOA
Storage Temperature	-40°C~70°C	-40°C~70°C	-40°C~70°C	-40°C~70°C	-40°C~70°C	-40°C~70°C
Working Temperature	-40°C~60°C	-40°C~60°C	-40°C~60°C	-40°C~60°C	-40°C~60°C	-40°C~60°C
Submersion	IPX8	20 meter 30 min	20 meter 30 min	20 meter 30 min	20 meter 30 min	20 meter 30 min
Vibration	1000G	1000G	1000G	1000G	1000G	1000G
PHYSICAL DATA						
Window Size (in)	20mm Diameter	20mm Diameter	20mm Diameter	20mm Diameter	30mm Diameter	30mm Diameter
Housing Dimension (in)	2.73×1.53×1.61	2.73×1.53×1.61	2.67×1.45×1.6	2.67×1.51×1.6	3.22×1.65×1.87	3.22×1.9×1.77
Housing Weight (oz)	3.74	3.74	4.06	4.33	6.77	6.56
Central Height Mount (in)	1.63	1.63	1.41	1.41	1.63	1.41

• INCLUDED ◦ NOT INCLUDED

	P.ID	P.ID HC
FUNCTIONS		
Flashlight	•	•
OPTICAL DATA		
Flashlight Output Power(lum)	500 / 1000	400 / 800
Candela	11000 / 23000	21000 / 42000
ELECTRONIC DATA		
Battery	18350	18350
Battery Life	60 minutes at 500 Lumen / 30 minutes at 1000 Lumen	60 minutes at 400 Lumen / 30 minutes at 800 Lumen
MECHANICAL DATA		
Housing Material	7075 T6 Aluminum	7075 T6 Aluminum
Surface Finish	Anodized	Anodized
Housing Color	Black	Black
Storage Temperature	-40°C~70°C	-40°C~70°C
Working Temperature	-20°C~51°C	-20°C~51°C
Submersion	IPX8	IPX8
Vibration	1500G	1500G
PHYSICAL DATA		
Housing Dimension (in)	3.2×1.2×1.4	3.2×1.2×1.4
Housing Weight (oz)	5	5

	P.ID-PLUS	P.ID-DUAL
FUNCTIONS		
Green Laser Pointer	•	•
IR Laser Pointer	◦	•
Flashlight	•	•
OPTICAL DATA		
Green or Red Laser Output Power(mW)	<5	<5
Green or Red Laser Class	Class 3R	Class 3R
IR Pointer or Illuminator Output Power(mW)	—	<0.7
IR Pointer or Illuminator Class	—	2M
Green Laser Wavelength(nm)	520	520
IR Laser Wavelength(nm)	—	830
Flashlight Output Power(lum)	450 / 900	400 / 800
Candela	10000 / 20000	8500 / 17000
ELECTRONIC DATA		
Battery	18350	18350
Battery Life	60 minutes at 450 Lumen 30 minutes at 900 Lumen	60 minutes at 400 Lumen 30 minutes at 800 Lumen
MECHANICAL DATA		
Housing Material	7075 T6 Aluminum	7075 T6 Aluminum
Surface Finish	Anodized	Anodized
Housing Color	Black	Black
Laser Adjustment per Click	4 MOA	4 MOA
Laser W&E Travel Range	±60 MOA	±60 MOA
Storage Temperature	-40°C~70°C	-40°C~70°C
Working Temperature	-20°C~51°C	-20°C~51°C
Submersion	IPX8	IPX8
Vibration	1500G	1500G
PHYSICAL DATA		
Housing Dimension (in)	3.6×1.2×1.4	3.6×1.2×1.4
Housing Weight (oz)	5.1	5.1

• INCLUDED ◦ NOT INCLUDED

	LE420	LE321-GR/RD	LE221	LE117
FUNCTIONS				
Green Laser Pointer	●	●	●	●
Red Laser Pointer	○	○	○	●
IR Laser Pointer	●	●	●	●
IR Laser Illuminator	●	●	○	○
Flashlight	●	○	○	○
OPTICAL DATA				
Green or Red Laser Output Power(mW)	5	5	5	5
Green or Red Laser Class	IIIa	IIIa	IIIa	IIIa
IR Pointer or Illuminator Output Power(mW)	0.7	0.7	0.7	0.7
IR Pointer or Illuminator Class	2M	2M	2M	2M
Green Laser Wavelength(nm)	520	520	520	520
Red Laser Wavelength(nm)	635	635	635	635
IR Laser Wavelength(nm)	830	830	830	830
Flashlight Output Power(lum)	600	—	—	—
ELECTRONIC DATA				
Battery	CR123A/18650	CR123A	CR123A	CR123A
MECHANICAL DATA				
Housing Material	Titanium	Titanium	Titanium	Titanium
Surface Finish	Titanium Finish	Titanium Finish	Titanium Finish	Titanium Finish
Housing Color	Black	Black	Black	Black
Laser Adjustment per Click	0.5 MOA	0.5 MOA	0.5 MOA	0.5 MOA
Laser W&E Travel Range	±60 MOA	±60 MOA	±60 MOA	±60 MOA
Storage Temperature	-40°C~65°C	-40°C~65°C	-40°C~65°C	-40°C~65°C
Working Temperature	-40°C~51°C	-40°C~51°C	-40°C~51°C	-40°C~51°C
Submersion	5 meter 30 min	5 meter 30 min	5 meter 30 min	5 meter 30 min
Vibration	1000G	1000G	1000G	1000G
PHYSICAL DATA				
Housing Dimension (in)	3.66×3.07×1.46	3.7×2.24×1.46	3.43×1.77×1.34	3.43×1.77×1.34

	LS420	LS321	LS221	LS117
FUNCTIONS				
Green Laser Pointer	●	●	●	●
Red Laser Pointer	○	○	○	●
IR Laser Pointer	●	●	●	●
IR Laser Illuminator	●	●	○	○
Flashlight	●	○	○	○
OPTICAL DATA				
Green or Red Laser Output Power(mW)	5	5	5	5
Green or Red Laser Class	IIIa	IIIa	IIIa	IIIa
IR Pointer or Illuminator Output Power(mW)	0.7	0.7	0.7	0.7
IR Pointer or Illuminator Class	2M	2M	2M	2M
Green Laser Wavelength(nm)	520	520	520	520
Red Laser Wavelength(nm)	635	635	635	635
IR Laser Wavelength(nm)	830	830	830	830
Flashlight Output Power(lum)	600	—	—	—
ELECTRONIC DATA				
Battery	CR123A	CR123A	CR123A	AA/CR2(Green)
MECHANICAL DATA				
Housing Material	7075 T6 Aluminum	7075 T6 Aluminum	7075 T6 Aluminum	7075 T6 Aluminum
Surface Finish	MAO	MAO	MAO	MAO
Housing Color	Black	Black	Black	Black
Laser Adjustment per Click	0.5 MOA	0.5 MOA	0.5 MOA	0.5 MOA
Laser W&E Travel Range	±50 MOA	±50 MOA	±50 MOA	±50 MOA
Storage Temperature	-40°C~65°C	-40°C~65°C	-40°C~65°C	-40°C~65°C
Working Temperature	-40°C~51°C	-40°C~51°C	-40°C~51°C	-40°C~51°C
Submersion	1 meter 30 min	1 meter 30 min	1 meter 30 min	1 meter 30 min
Vibration	1000G	1000G	1000G	1000G
PHYSICAL DATA				
Dimension(in)	3.6×2.9×1.6	3.6×2.2×1.6	3.4×1.9×1.5	3×1.5×1.3

● INCLUDED ○ NOT INCLUDED ▲ OPTIONAL

	RMLt	RML
FUNCTIONS		
Green Laser Pointer	•	•
Red Laser Pointer	•	•
IR Laser Pointer	•	•
OPTICAL DATA		
Green or Red Laser Output Power (mW)	<5	<5
Green or Red Laser Class	Class 3R	Class 3R
IR Pointer or Illuminator Class	<0.7	<0.7
Green Laser Wavelength(nm)	520	520
Red Laser Wavelength(nm)	635	635
IR Laser Wavelength(nm)	830	830
ELECTRONIC DATA		
Battery	CR1/3N	CR1/3N
Battery Life	300 min at IR/Red 100 min at Green	300 min at IR/Red 100 min at Green
MECHANICAL DATA		
Housing Material	Titanium	Polymer
Surface Finish	Titanium Finish	Paint
Housing Color	Black	Black
Laser Adjustment per Click	4 MOA	4 MOA
Laser W&E Travel Range	±60 MOA	±60 MOA
Storage Temperature	-40°C~70°C	-40°C~70°C
Working Temperature	-20°C~51°C	-10°C~51°C
Submersion	IPX8	IPX8
Vibration	2000G	2000G
PHYSICAL DATA		
Housing Dimension (in)	1.97×1.18×0.91	1.97×1.18×0.91
Housing Weight (oz)	1.8	1.3

	HM3XT	HM3X
OPTICAL DATA		
Magnification	3X	3X
Exit Pupil	7.6mm	7.6mm
Eye Relief	70mm	70mm
Filed of View	7°	7°
Diopter	±3D	±3D
Transmittance	0.75	75%
Lens Material	Optical Glass	Glass
ENVIRONMENT DATA		
Storage Temperature (°C)	-40°C~70°C	-40°C~70°C
Operating Temperature (°C)	-30°C~60°C	-30°C~60°C
Humidity (%)	0.95	0.95
Waterproof	1 meter 30 min	1 meter 30 min
Nitrogen (Concentration)	99%	99%
Vibration Resistance (1000)	<2MOA	<2MOA
MECHANICAL DATA		
Housing Material	Titanium	Durable aluminum
Housing Finish	Titanium/Black	MAO/Black
Housing Dimension (in)	3.2 x 1.8 x 2.5	4 x 1.7 x 2.5
Housing Weight (oz)	11.6	9.8



HOLOSUN

HOLOSUN

HOLOSUN.COM

INFO@HOLOSUN.COM