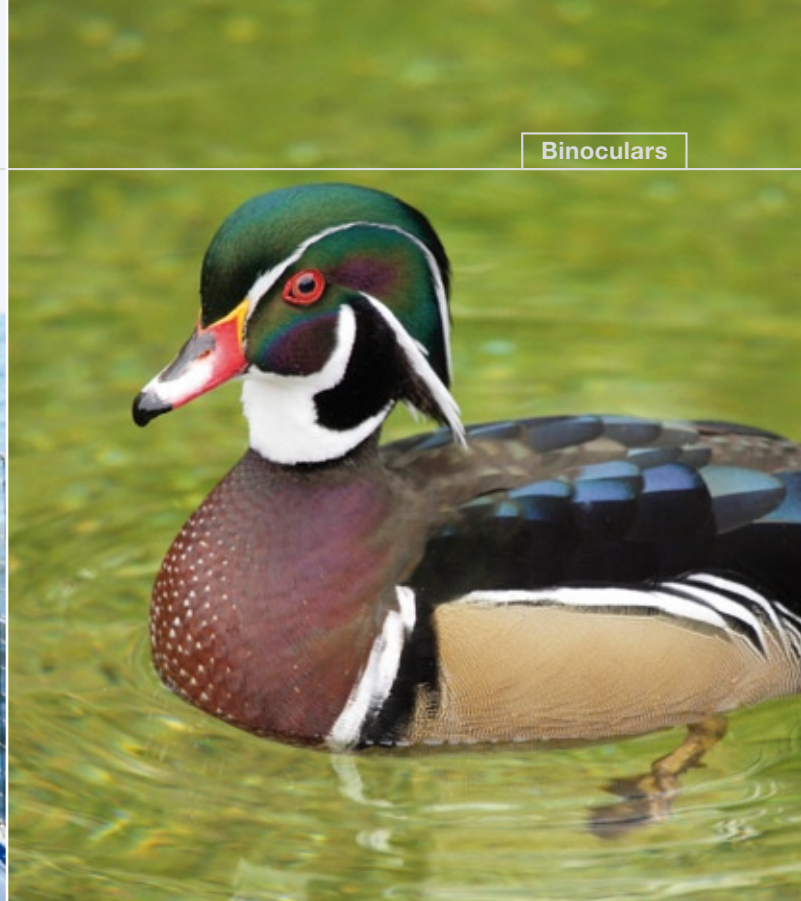


FUJINON
FUJIFILM

Binoculars



**For all who want to see more of the world:
Binoculars from Fujinon.**

Binoculars



Water



Nature

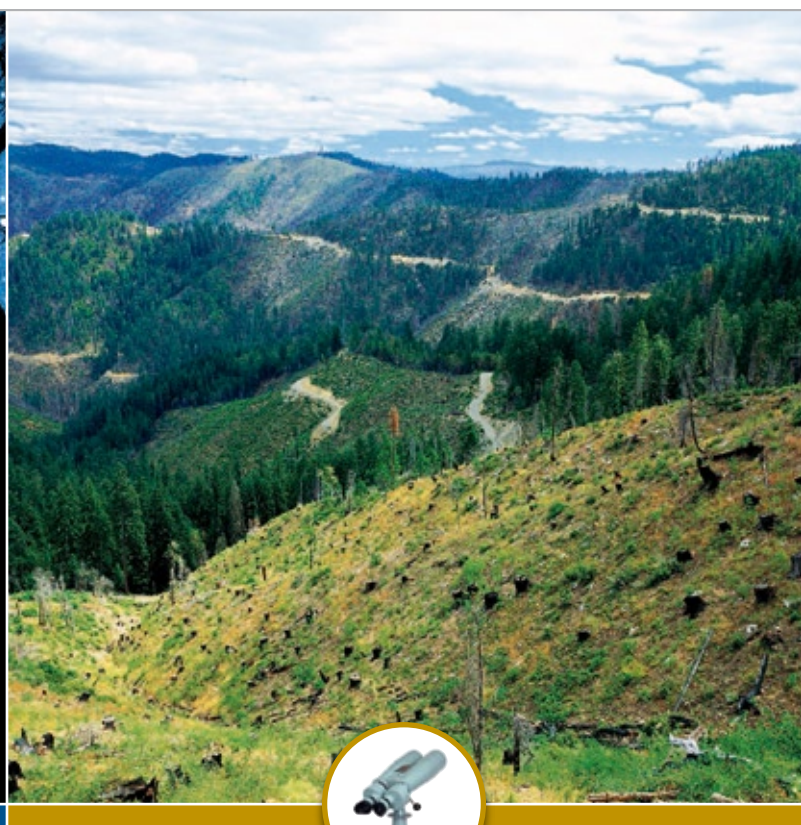
We have been bringing you close up to the action for 60 years: Hand-held and giant binoculars from Fujinon.



meibo 6x25 MM



Stars



Security

Fujinon and binoculars – a success story that started already 1947. In that year Fujinon introduced its first binoculars to the world: the meibo 6x25 MM. They entered the market as a handy pair of binoculars enthusiastically received by innumerable users who appreciated their performance. This start-up was the foundation of a long tradition of quality manufacturing. Some 60 years later binoculars from Fujinon are nowadays even more popular than ever before and renowned worldwide for their exceptional quality. The outstanding high grade optics guarantee tack-sharp and unsurpassed bright images. This could be realised due to Fujinon's patented anti-reflection Electron Beam Coating and individually optimised optical calculations. The rugged construction withstands even the worst possible weather conditions, actually many models meet the most demanding military standards. The large variety of binoculars yields the right choice of optics for numerous applications.

Fujinon binoculars are perfectly suited for professional use or exciting visual leisure-time moments. Whether you are out at sea, watching birds and nature, gazing at the stars or carrying out professional observation tasks – Fujinon brings your target closer in a most impressive way. The range available covers everything from 8x32 outdoor models, 7x50 marine binoculars up to the 40x 150 ED, which is the biggest binocular available world-wide.

In addition, Fujinon is offering the most advanced opto-electronical technology on the field of stabilised binoculars. The wide range of products covers both budget-priced Techno-Stabi models to specialised professional binoculars like the unique Stabiscopes Day+Night with interchangeable eyepieces and state-of-the-art night vision technology. All around the world, those binoculars are reliable companions for the most demanding surveillance tasks.

Fujinon. To see more is to know more.

**Enjoy fantastic views even on rough waters:
Our marine binoculars.**



Water



7x50 FMTRC-SX2

Long distances, rough waves, sprays of salt water – observations at sea make high and tough demands on binoculars. For that reason Fujinon offers a large range of professional precision binoculars for marine requirements. Of course, all these marine binoculars are exceptionally robust, waterproof and nitrogen-filled, thanks to a sealed body and protective rubber covering that allows safe handling even under wet conditions. In addition, the high-performance MT/FMT series come with the patented Fujinon EBC coating that ensures superior light transmission, reflection suppression, lens fogging protection and corrosion prevention.

The professional MT/FMT series.

They are your ideal companions anywhere at sea: with 7x to 16x magnification you can make perfect scans of the horizon any-time. The models provide unsurpassed quality regarding light transmission through the use of large objective diameters and unrivalled lens coating technology. In addition, the FMT models reduce optical field curvature to a minimum yielding sharp images from edge to edge. As a result, a Fujinon FMT marine binocular shows the target object always perfectly focussed both at the image center and the field edge.

The maritime WP series.

The floaters among our binoculars. They are watertight and never sink due to their nitrogen-filled, ultra-light polycarbonate body. Even without their floatable neckstrap they never sink. With 7x magnification and 50 mm objective diameter they bring up the smallest detail and give you a superb view even under poor viewing conditions. At night, you will never lose your destination thanks to the electronically illuminated compass. These models are supplied with either individual or central focussing.



7x50 WP11-CF

Merge with nature: Special binoculars to view wildlife and landscapes.



Techno-Stabi 14x40

If you wish to view nature in its full beauty as clearly and as closely as possible, you need a reliable pair of binoculars. They need to be light, since the walk through the woods can be longer than expected. They need to be weatherproof, since it can start to rain at any time. Above all, they need to offer a high resolution for presenting details even at very long distances without using a tripod. This is what birdwatchers need to pick out the very plumage details of birds in all their subtle nuances – hence a Techno-Stabi can become an essential tool for determining species and their features.

The Fujinon Techno-Stabis.

Especially in case of long period observations, it becomes more and more difficult to maintain steady viewing with conventional binoculars. In such a case it is good to have a Fujinon Techno-Stabi at hand. Without any support like a tripod you can have a sharp and stable image without wobbling at any time – at 14x magnification! Electronic image stabilisation is the key. It corrects any wobbling or shaking applied to the binocular automatically and without any delay. Effects like natural tremor, breathing, strong vibrations and movements on a boat can be compensated with Fujinon's unique stabilisation technology. This electronical stabilisation, light weight and the ergonomically designed body allow extended periods of observation without getting tired.



HCF 10x50

The HCF and UL roof prism series.

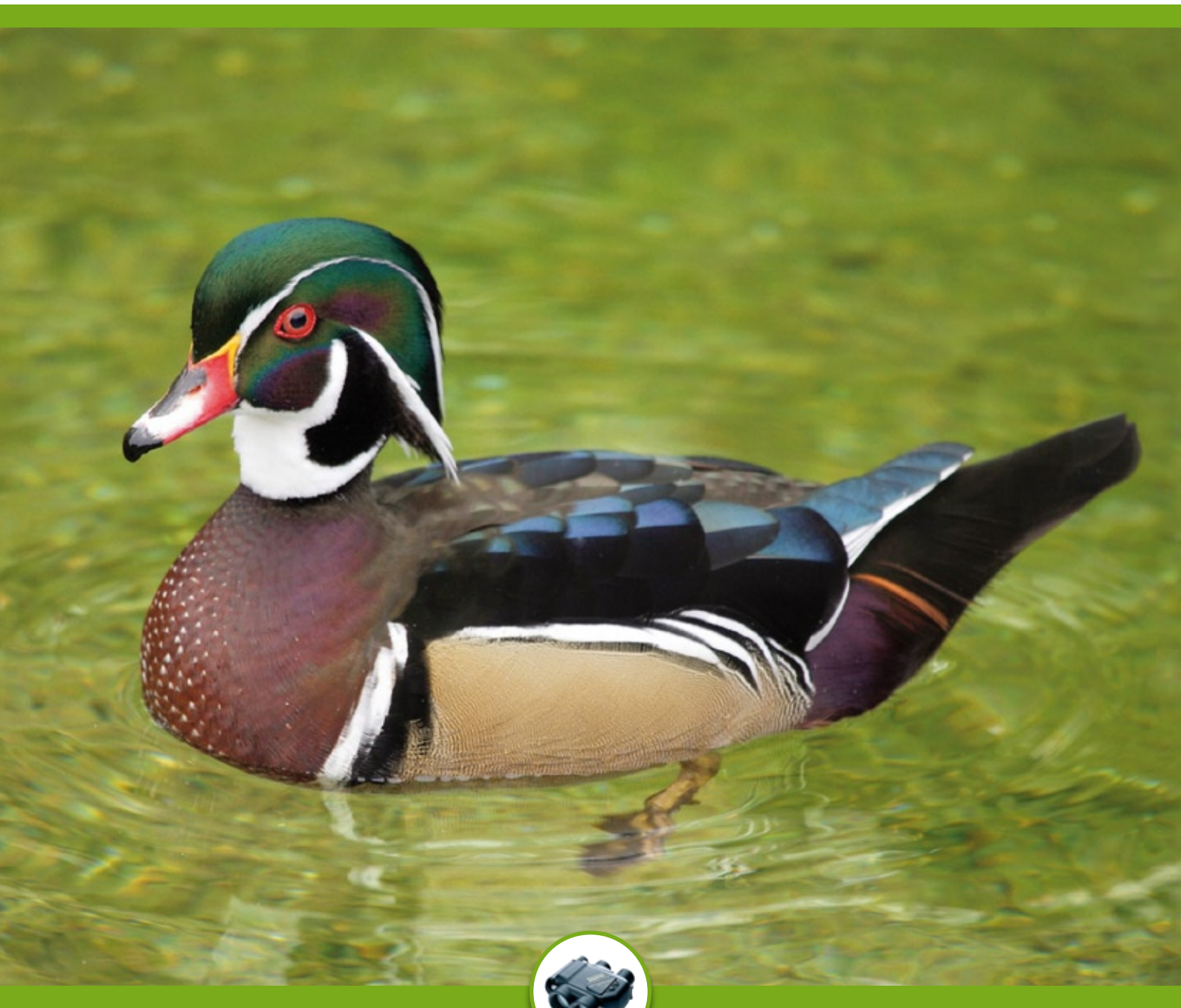
With just 181 g to 266 g weight the new ultra-compact UL models are the right companion for concerts, sports and indoor events. The handy center focus system gives you a sharp and clear image for anything between 2.5 m and infinity within a moment. The 5x21 version offers an incredible 9.4° field-of-view (164 m at 1,000 m), the 8x21 outperforms any conventional opera glass with its optical power. The new HCF series offers a universal choice for any application you need binoculars for – they are available as 8x25, 10x25, 8x32, 10x32, 8x42, 10x42 and 10x50. All models have an ergonomic design and internal centre-focus system, low-weight PPS rubber cover for perfect handling and shock-proofness, they are fully waterproof and nitrogen-filled. The high-performance lens system offers incredibly sharp images with a very high contrast even under critical light conditions. The 1m close-focus gives you a chance to spot nearby birds or insects with amazing detail.



UL-Wide 8x21

The LF/MF/HB roof prism series.

Birdwatchers and other friends of nature appreciate the versatility and compact construction of our high-grade roof prism binoculars. The MF 8x42 and 10x42 models offer phase-corrected prisms with enhanced silver coating and fully multi-coated lenses. The compact LF series is characterised by a huge focussing range from 1.5 metres to infinity and rugged mil-spec waterproof mechanics. Thanks to their compact dimensions, these binoculars can fit into any backpack. With an objective lens diameter of 60 mm (magnifications 10x/12x/15x), the HB series is used in all places where high resolution and large light-gathering power are required. Despite their size, these binoculars are easy to handle and uncomplicated to use thanks to an ergonomically designed body. They also come with a protective rubber covering.



Nature

Do you love the stars? Then reach for them with our powerful astronomical binoculars.



Stars

Want to take a trip into outer space? Then the special binoculars from Fujinon are your first choice. Whether you want to discover a comet or just enjoy viewing the night sky: Fujinon's astronomical binoculars meet the most ambitious demands on optics for night-time observations. All the models fascinate with their superior image brightness and sharpness that presents tack-sharp star images right to the corners of the image. The patented Electron Beam Coating (EBC) of the optics provides a maximum of light transmission and suppression of stray light or reflexions. The binoculars are of course perfectly protected against humidity coming from dew, wetness or rain when used outdoors.

The large 150 mm binoculars.

Each observation of the heavens with the biggest binoculars in the world is an unparalleled viewing experience. Explore the clouds of stars of our Milky Way and discover distant galaxies. The huge number of objects that can be reached and the sheer power of their large aperture lenses gives you completely new impressions of the night sky. Seeing the sky with the advantage of using both eyes is both relaxing and thrilling to any kind of observer. In addition to the 25x150 MT-SX achromat with its great light-gathering power, there is also the ED version with an exceptional clear and sharp image without colour aberrations. It is also available with 45° viewing angle for even more observing comfort when looking upwards. The 40x150 ED-SX is the first choice for those who need the highest amount of optical resolution.



40x150 ED-SX

The handy FMT series.

In addition to the large binoculars, Fujinon also offers a large of versatile models for a nocturnal trip through the heavens: the FMT series. Their compact construction and perfect handling make these binoculars as ideal hand-held tools for night sky observations. If you want to stay relaxed on extended sky tours, you can also attach them to any suitable camera tripod via its standard 1/4" socket. All FMT models are equipped with special field flattener lenses to supply incredibly sharp star images to the very edge of the binocular's field. With the support of Fujinon's EBC coating they repeatedly outperformed many competing binoculars from other renowned manufacturers.



25x150 MT-SX



16x70 FMT-SX2

Security beyond your vision: Special binoculars for long-distance surveillance.

Whether for border patrols, police work, coast guard or SAR services – all these organisations need high-performance binoculars to ensure safety and security of persons and objects. Their applications require the detection of all accessible target details for immediate action. As a result, Fujinon binoculars are proven performers all around the world. They are frequently preferred by many governmental authorities, international organisations and demanding security suppliers. Their marine-tested construction enables them to be used under any weather conditions. This durability is a result of our extremely tough testing procedure non-Fujinon binoculars would not survive.

The steady Stabiscopes.

Stabiscopes are used for professional observations when strong motion and vibration affect viewing. They work perfectly on helicopters, boats and in moving cars. A high-speed gyroscopic motor effectively stabilises the image and provides high-resolution viewing with no jittering even under extreme conditions. The magnifications provided are 12x or 16x. The Stabiscopes are also available as Day+Night binoculars with built-in image intensifiers.



15x80 MT-SX



8x50 FMTR D/N



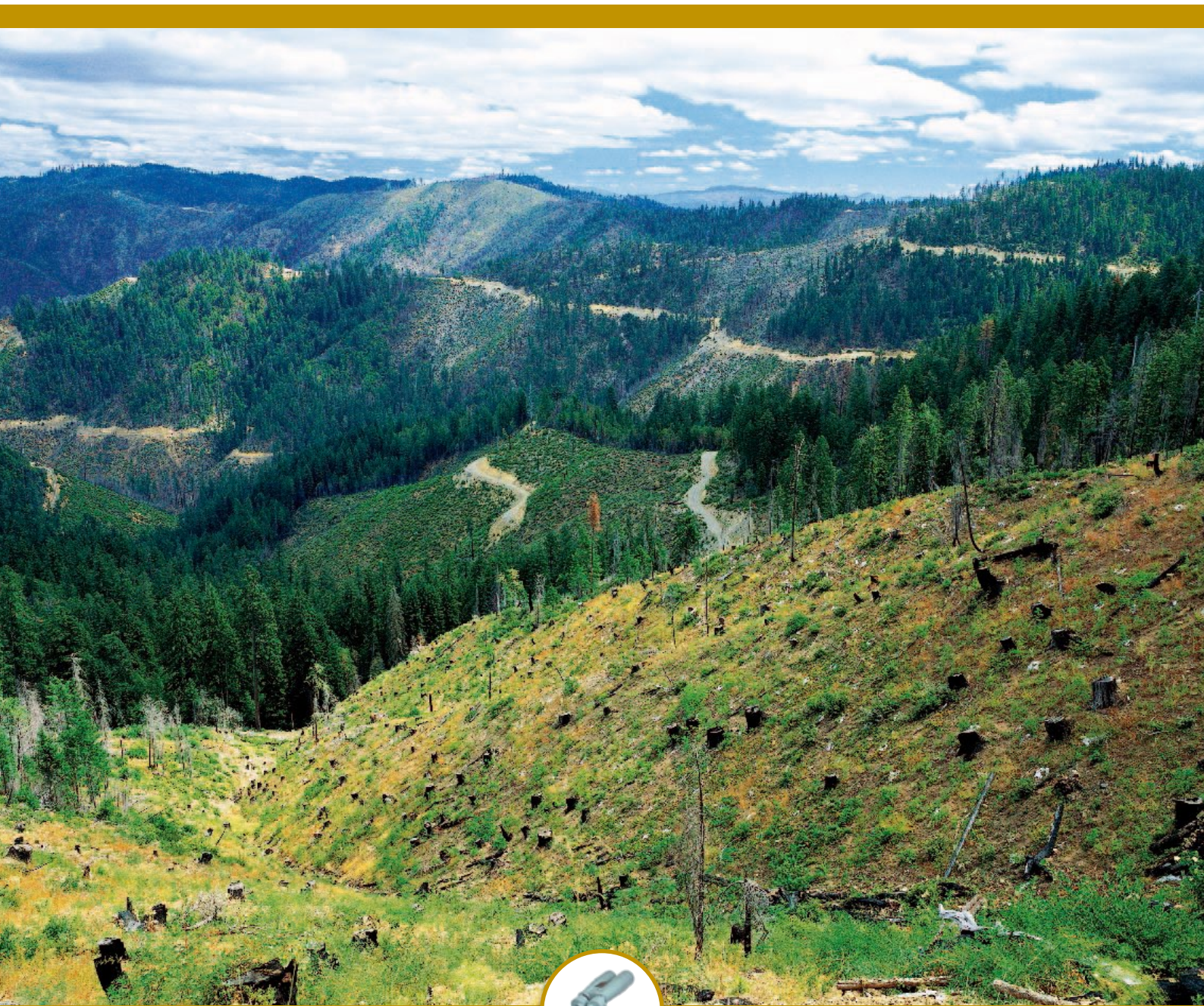
S12x40

The superior large-aperture binoculars.

They are the best choice for your long-term observations and allow relaxed high-resolution binocular viewing over extended periods. Their large objective lenses with a diameter of up to 150 mm gather an exceptionally large amount of light – the result are enormously bright, high-contrast images even when viewing at dusk or dawn. The high-class models are also equipped with ED lenses. These ensure perfect viewing with a minimum of colour aberrations and a maximum of natural object colour rendition right up to the field edge. The Day+Night version of these binoculars are ideal for 24-hour use, when equipped with state-of-the-art image intensifying tubes they allow long-range surveillance even in dark, moonless nights over many kilometres.

The 8x50 FMTR D/N for day and night.

The Fujinon 8x50 FMTR D/N (Day+Night) is a combination of high-quality ED-lens binoculars and a binocular night vision device. This is made possible by two sets of interchangeable oculars that have been especially developed for day and night use. Instead of having to carry around two vision devices, the 8x50 FMTR makes it possible to work with only one unit – this saves a great deal of weight and provides more flexibility in all kinds of applications. It's vision capabilities allow impressive night-time viewing even over long distances without any auxiliary infrared illuminator.



Security

Model	Magnification	Objective diameter	Eye relief	Field of view	Field of view at 1,000 m	Exit pupil	Twilight factor	Length x width	Weight
7x50 MT-SX2 ^{1,2}	7x	50 mm	12 mm	7°30'	131 m	7.1 mm	18.7	218 x 185 mm	1.22 kg
7x50 MTR-SX2 ^{1,2,9}	7x	50 mm	12 mm	7°30'	131 m	7.1 mm	18.7	218 x 187 mm	1.30 kg
7x50 MTRC-SX2 ^{1,2,7,9}	7x	50 mm	12 mm	7°30'	131 m	7.1 mm	18.7	218 x 187 mm	1.36 kg
10x70 MT-SX2 ^{1,2}	10x	70 mm	12 mm	5°18'	93 m	7.0 mm	26.5	238 x 269 mm	1.80 kg
7x50 FMT-SX2 ^{1,2,3}	7x	50 mm	23 mm	7°30'	131 m	7.1 mm	18.7	218 x 196 mm	1.38 kg
7x50 FMTR-SX2 ^{1,2,3,9}	7x	50 mm	23 mm	7°30'	131 m	7.1 mm	18.7	218 x 198 mm	1.41 kg
7x50 FMTRC-SX2 ^{1,2,3,7,9}	7x	50 mm	23 mm	7°30'	131 m	7.1 mm	18.7	218 x 198 mm	1.46 kg
10x50 FMT-SX2 ^{1,2,3}	10x	50 mm	19.8 mm	6°30'	113 m	5.0 mm	22.4	218 x 191 mm	1.40 kg
10x50 FMTR-SX2 ^{1,2,3,9}	10x	50 mm	19.8 mm	6°30'	113 m	5.0 mm	22.4	218 x 191 mm	1.43 kg
10x70 FMT-SX2 ^{1,2,3}	10x	70 mm	23 mm	5°18'	93 m	7.0 mm	26.5	238 x 280 mm	1.93 kg
16x70 FMT-SX2 ^{1,2,3}	16x	70 mm	15.5 mm	4°	70 m	4.4 mm	33.5	238 x 270 mm	1.92 kg
7x50 WPC-XL ^{2,4,5,6}	7x	50 mm	18 mm	7°	122 m	7.1 mm	18.7	200 x 178 mm	0.91 kg
7x50 WPC-CF ^{2,4,5,6}	7x	50 mm	22 mm	7.2°	126 m	7.1 mm	18.7	203 x 158 mm	1.20 kg
7x50 WP-XL ^{2,4,5}	7x	50 mm	18 mm	7°	122 m	7.1 mm	18.7	200 x 178 mm	0.86 kg
7x50 WP-CF ^{2,4,5}	7x	50 mm	22 mm	7.2°	126 m	7.1 mm	18.7	203 x 158 mm	0.93 kg
Techno-Stabi TS14x40 ^{4,8,9,13}	14x	40 mm	13 mm	4°	70 m	2.9 mm	23.7	186 x 148 mm	1.30 kg
Techno-Stabi TS12x32 2-mode ^{4,8,9,13}	12x	32 mm	15 mm	5°	87.5 m	2.67 mm	19.6	177 x 141 mm	1.07 kg
8x32 LF ^{4,9,10,13}	8x	32 mm	17 mm	6.4°	111 m	4.0 mm	16.0	118 x 100 mm	0.47 kg
10x32 LF ^{4,9,10,13}	10x	32 mm	10.5 mm	5.2°	90 m	3.2 mm	17.9	118 x 100 mm	0.47 kg
8x42 MF ^{4,9,10,13}	8x	42 mm	21 mm	6.5°	114 m	5.3 mm	18.3	135 x 155 mm	0.68 kg
10x42 MF ^{4,9,10,13}	10x	42 mm	15.5 mm	6°	105 m	4.2 mm	20.5	135 x 155 mm	0.68 kg
10x60 HB ^{4,9,10}	10x	60 mm	19 mm	6°	105 m	6.0 mm	24.5	155 x 270 mm	1.60 kg
12x60 HB ^{4,9,10}	12x	60 mm	15.5 mm	5°	87.5 m	5.0 mm	26.8	155 x 270 mm	1.60 kg
15x60 HB ^{4,9,10}	15x	60 mm	16 mm	4°	70 m	4.0 mm	30.0	155 x 270 mm	1.60 kg
UL-Ultrawide 5x21 ⁴	5x	21 mm	11 mm	9.4°	164 m	4.2 mm	10.2	85 x 106 mm	0.267 kg
UL-Wide 8x21 ⁴	8x	21 mm	11 mm	8.2°	143 m	2.6 mm	13.0	85 x 106 mm	0.181 kg
HCF-8x25 ^{4,9,13}	8x	25 mm	18 mm	7°	122 m	3.1 mm	14.1	108 x 111 mm	0.34 kg
HCF-10x25 ^{4,9,13}	10x	25 mm	18 mm	5.5°	96 m	2.5 mm	15.8	108 x 111 mm	0.34 kg
HCF-8x32 ^{4,9,13}	8x	32 mm	18 mm	6.5°	114 m	4.0 mm	16.0	108 x 116 mm	0.37 kg
HCF-10x32 ^{4,9,13}	10x	32 mm	18 mm	5.5°	96 m	3.2 mm	17.9	108 x 116 mm	0.37 kg
HCF-8x42 ^{4,9,13}	8x	42 mm	18 mm	7°	122 m	5.25 mm	18.3	132 x 135 mm	0.71 kg
HCF-10x42 ^{4,9,13}	10x	42 mm	18 mm	5°	87 m	4.2 mm	20.5	132 x 135 mm	0.71 kg
HCF-10x50 ^{4,9,13}	10x	50 mm	18 mm	5.5°	96 m	5.0 mm	22.4	143 x 135 mm	0.84 kg
25x150 MT-SX ^{1,13}	25x	150 mm	19 mm	2.7°	47 m	6.0 mm	61.2	365 x 962 mm	18.50 kg
25x150 ED-SX ^{1,11,13}	25x	150 mm	19 mm	2.7°	47 m	6.0 mm	61.2	365 x 962 mm	18.50 kg
25x150 EM-SX ^{1,10,13}	25x	150 mm	19 mm	2.7°	47 m	6.0 mm	61.2	365 x 964 mm	19.50 kg
40x150 ED-SX ^{1,10,13}	40x	150 mm	15 mm	1.7°	30 m	3.8 mm	77.5	365 x 946 mm	18.50 kg
15x80 MT-SX ^{1,13}	15x	80 mm	16 mm	4°	70 m	5.3 mm	34.6	225 x 510 mm	7.06 kg
Stabiscopes S12x40 ^{4,12,13}	12x	40 mm	17 mm	4.7°	82 m	3.3 mm	21.9	200 x 210 mm	1.80 kg
Stabiscopes S16x40 ^{4,12,13}	16x	40 mm	12 mm	3.4°	60 m	2.5 mm	25.3	200 x 210 mm	1.80 kg
Stabiscopes S12x40 D/N ^{4,12,13,14}	12x	40 mm	11.5 mm	4.2°	73 m	3.3 mm	21.9	200 x 240 mm	2.00 kg
8x50 FMTR D/N ^{1,3,9,13,14}	8x	50 mm	24.5 mm	4.5°	79 m	6.3 mm	20.0	219 x 251 mm	2.00 kg

1 EBC coating, 2 Pressurised waterproof, 3 Field flattener included, 4 Multi-coated, 5 Floatable, 6 Illuminated compass, 7 Compass, 8 Electronic image stabilisation ($\pm 5^\circ$), 9 Rubber-covered, 10 Phase-corrected roof prisms, 11 ED Apochromat, 12 Gyro-stabilisation, 13 Waterproof, 14 Night vision image intensifier

Specifications are subject to change without notice. 02/10