



# *BLASER SADDLE MOUNT*

PROPERLY CONNECTED.  
GUARANTEED.





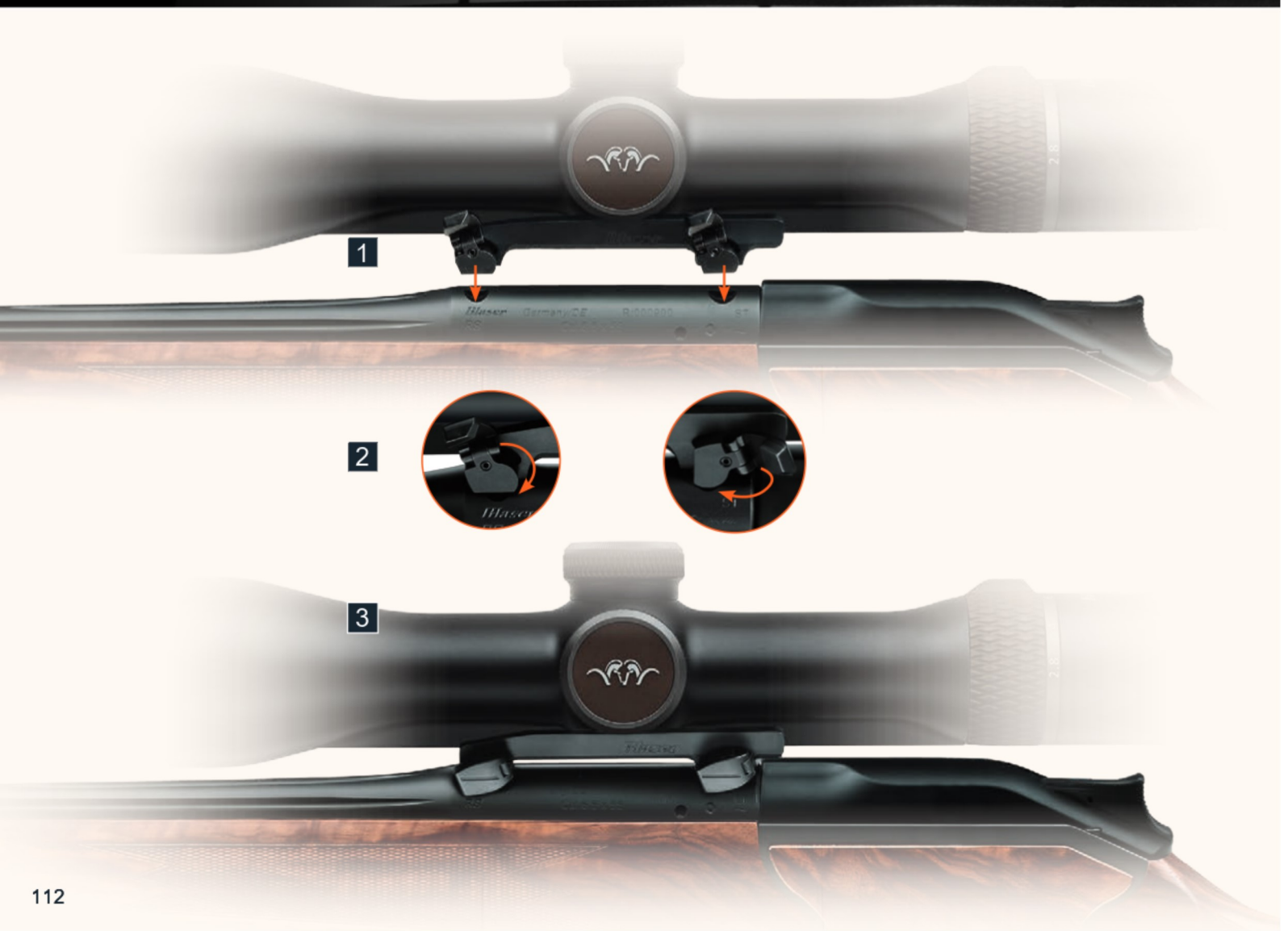


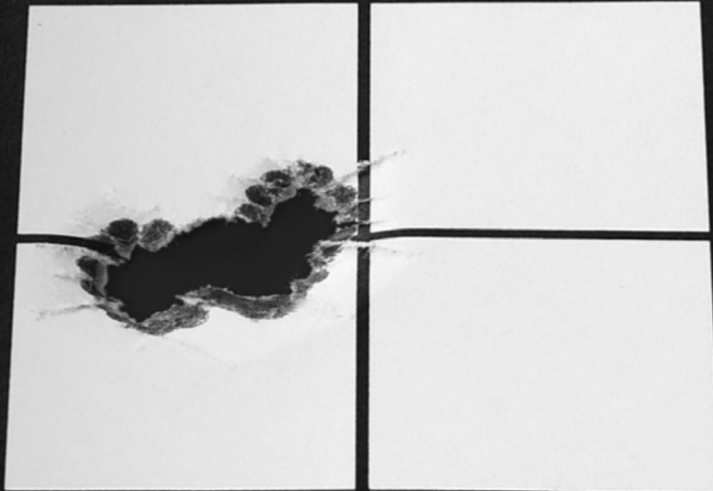
Blaser's original Saddle Mount has revolutionized the connection between the rifle and the scope. Its consistent accuracy, reliability and precision are legendary and unmatched. Only the original Blaser Saddle Mount secures you a 10-year guarantee for the shooting performance of our rifles.

[Blaser](#)[R8](#)[Optics](#)[Saddle Mount](#)[K95](#)[BBF95 / 97](#)[BS95 / 97](#)[BB97](#)[BD #](#)[D99](#)[F16](#)[F3](#)[Custom](#)[Wood & Stocks](#)[Ammunition](#)[Accessoires](#)[Webshop](#)[Blaser Safaris](#)[Outfits](#)**Blaser**



- 1 The Blaser Saddle Mount is placed in the notches on the barrel with the locking levers open.
- 2 No tools are needed to rotate the locking levers into position. This releases the tension on the mount lock on the barrel. To prevent the locking levers interfering with the use of the rifle, they are folded inwards.
- 3 The rifle scope is properly positioned and ready for zeroing. The Blaser Saddle Mount can be removed and replaced as often as you wish, with no need to re-zero.





# SIMPLE, FLEXIBLE AND 100% REPEATABLE ACCURACY

Every Blaser rifle or combination gun can be fitted with an original Blaser Saddle Mount.

After being zeroed in once, the rifle scope can be removed and replaced in just three steps, with no need for tools, as often as desired, with 100% return to zero. This allows you the flexibility to use different scopes on the same barrel.

Four inconspicuous notches on the chamber end of the barrel secure the one-piece mount without tension. The barrel itself is totally free floating. No further work is required on the firearm, and there is no need for large mount bases that can interfere with your sight picture or the look of the rifle.

